



MLS 7064410 Land

**\$650,000**

156.9 Acres  
Raw Land

6172 76th Street  
Motley MN 56466

Status: Active

**Description:**

Looking for your hunting paradise? This is it! 156 acres of Premium ground with a great mix of tillable ground, trees and marsh for all of your hunting goals. This property has produced Deer, Bear, Turkey, Grouse, Goose and Duck at great numbers. This property also offers a 2 Bedroom 1 Bathroom 1460 sq ft house with a newer furnace and water heater. The perfect setup for a base camp. In addition to the house, there is a 40x45 pole shed and 24x60 open end storage building. All of the essentials for storing your toys and equipment. The property already has a compliant septic and drilled well. All you need is your hunting party! The property connects to over 4000 acres of tax forfeited state ground with over 100 acres isolated to this property due to swamps. There is plenty of high ground if you want to plant a larger crop or multiple options for food plots throughout the property. DO NOT access the property without an appointment.

**Additional Details:**

Year Built	1920
Lot Acres	156.9
Lot Dimensions	2630x2594x2636x2596
School District	2170
Taxes	\$710
Taxes with Assessments	\$796
Tax Year	2026

**Additional Features:**

**Driving Directions:**

From Motley head N on MN-64 for approx. 13 miles, Turn right on 76th Street SW and follow for approx. 2.3 miles to property on right.



Listed By:  
RE/MAX Advantage Plus

Affinity Real Estate Inc. participates in the Regional Multiple Listing Service of Minnesota, Inc Broker Reciprocity (sm) program, allowing us to display other broker's listings on our website. All properties are subject to prior sale, change or withdrawal.



Call Affinity Real Estate

**218-237-3333**

[info@affinityrealestate.com](mailto:info@affinityrealestate.com)



Affinity Real Estate - 600 Park Avenue South - Park Rapids MN 56470



website: [www.AffinityRealEstate.com](http://www.AffinityRealEstate.com) | email: [info@affinityrealestate.com](mailto:info@affinityrealestate.com) | office: 218-237-3333 | fax:218-237-3377

**Affinity**  
REAL ESTATE INC

**\$650,000**  
MLS 7064410 Land  
6172 76th Street  
Motley MN 56466



website: [www.AffinityRealEstate.com](http://www.AffinityRealEstate.com) | email: [info@affinityrealestate.com](mailto:info@affinityrealestate.com) | office: 218-237-3333 | fax:218-237-3377



**\$650,000**  
MLS 7064410 Land  
6172 76th Street  
Motley MN 56466



website: [www.AffinityRealEstate.com](http://www.AffinityRealEstate.com) | email: [info@affinityrealestate.com](mailto:info@affinityrealestate.com) | office: 218-237-3333 | fax:218-237-3377



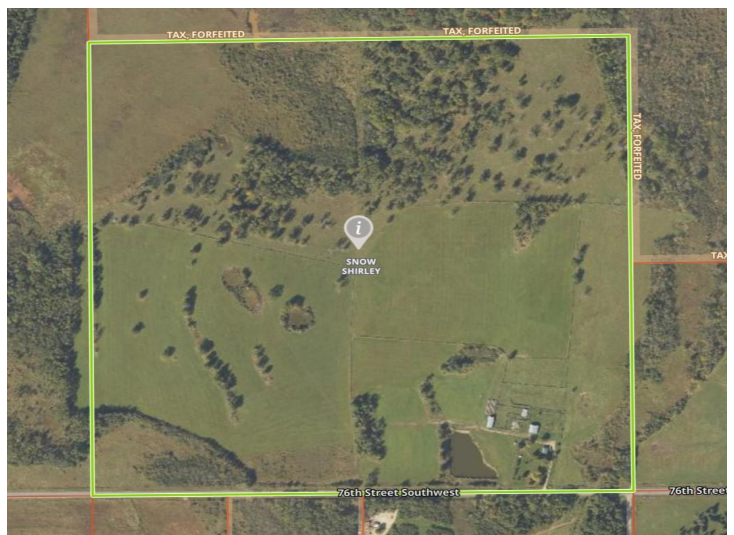
**\$650,000**  
MLS 7064410 Land  
6172 76th Street  
Motley MN 56466



website: [www.AffinityRealEstate.com](http://www.AffinityRealEstate.com) | email: [info@affinityrealestate.com](mailto:info@affinityrealestate.com) | office: 218-237-3333 | fax:218-237-3377



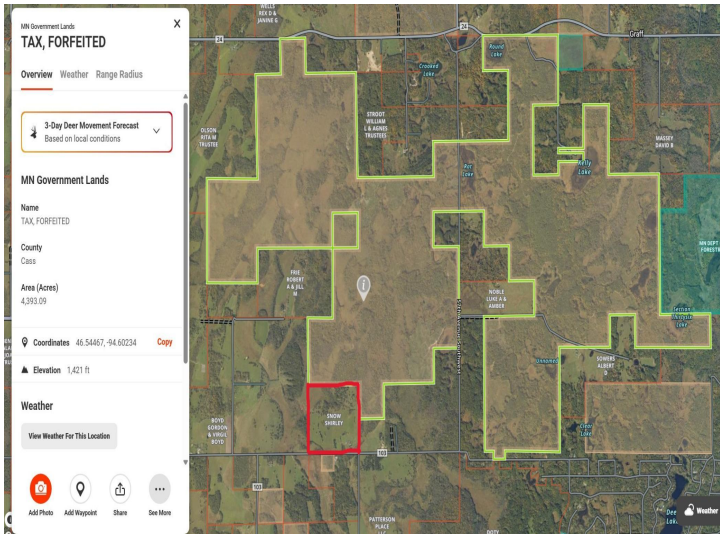
**\$650,000**  
MLS 7064410 Land  
6172 76th Street  
Motley MN 56466



website: [www.AffinityRealEstate.com](http://www.AffinityRealEstate.com) | email: [info@affinityrealestate.com](mailto:info@affinityrealestate.com) | office: 218-237-3333 | fax: 218-237-3377

**Affinity**  
REAL ESTATE INC

**\$650,000**  
MLS 7064410 Land  
6172 76th Street  
Motley MN 56466



website: [www.AffinityRealEstate.com](http://www.AffinityRealEstate.com) | email: [info@affinityrealestate.com](mailto:info@affinityrealestate.com) | office: 218-237-3333 | fax:218-237-3377



**\$650,000**  
MLS 7064410 Land  
6172 76th Street  
Motley MN 56466