



MLS 7064670 Lake Land

\$73,900

Description:

3.4-acre lot with deeded access to Birch Lake, ready for your summer plans! This beautiful property offers the perfect setting to build your dream home or cabin retreat. Enjoy peaceful, private surroundings with plenty of space to relax, explore, and take in the natural beauty of the area.

With generous acreage and shared lake access, you'll enjoy the best of both worlds — privacy and all the benefits of lake life. Opportunities like this don't come around often — secure your slice of up-north paradise today!

Additional Details:

Lot Acres	3.54
Lot Dimensions	408x496x183x529
School District	8001
Taxes	\$76
Taxes with Assessments	\$76
Tax Year	2026

Additional Features:

Driving Directions:

From Garrison, go north on 169 to North (left) onto 450th Ave. Turn right to continue north on 450th Ave to 242nd Ln on the left.



Listed By:
RE/MAX Results - Nisswa

Affinity Real Estate Inc. participates in the Regional Multiple Listing Service of Minnesota, Inc Broker Reciprocity (sm) program, allowing us to display other broker's listings on our website. All properties are subject to prior sale, change or withdrawal.



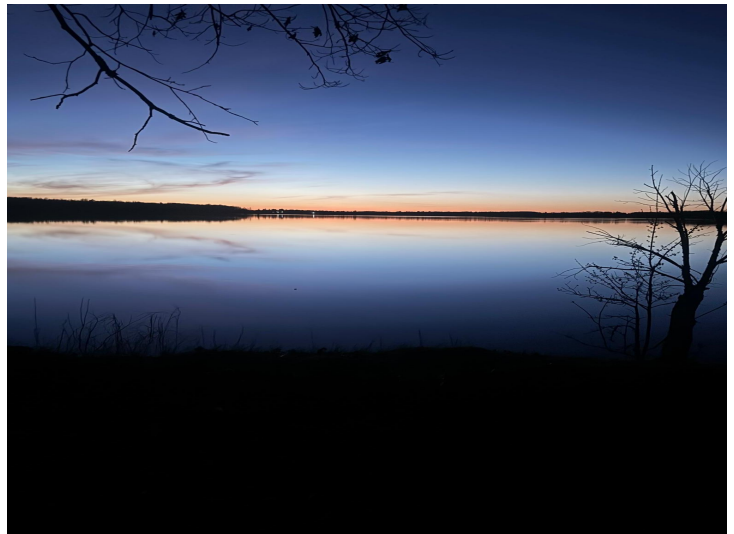
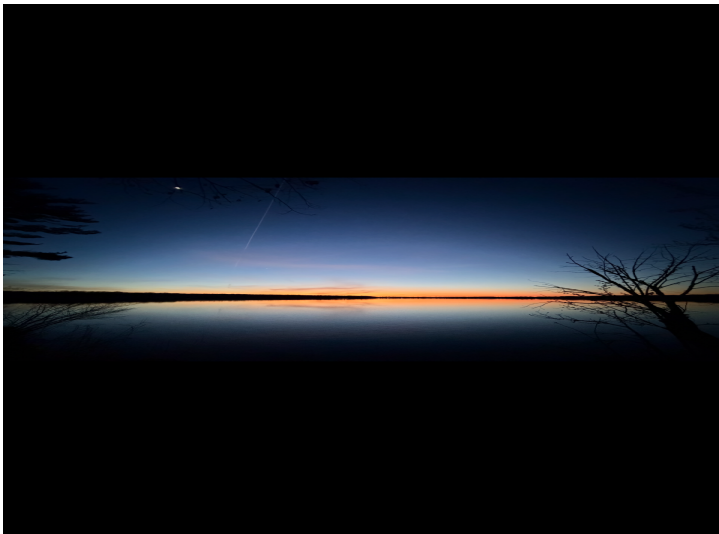
Call Affinity Real Estate

218-237-3333

info@affinityrealestate.com



Affinity Real Estate - 600 Park Avenue South - Park Rapids MN 56470



website: www.AffinityRealEstate.com | email: info@affinityrealestate.com | office: 218-237-3333 | fax:218-237-3377



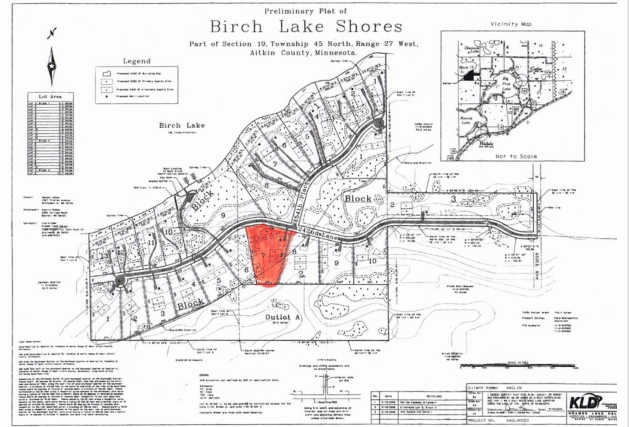
\$73,900
MLS 7064670 Lake Land
Lot 7 242nd Lane
Aitkin MN 56431



website: www.AffinityRealEstate.com | email: info@affinityrealestate.com | office: 218-237-3333 | fax:218-237-3377



\$73,900
MLS 7064670 Lake Land
Lot 7 242nd Lane
Aitkin MN 56431



website: www.AffinityRealEstate.com | email: info@affinityrealestate.com | office: 218-237-3333 | fax:218-237-3377



\$73,900
 MLS 7064670 Lake Land
 Lot 7 242nd Lane
 Aitkin MN 56431