



MLS 7064780 Commercial

**\$1,250,000**

48989 County Rd 134  
Talmoon MN 56637

Waterfront: Jessie

Status: Active

**Description:**

Loon's Landing, one of Minnesota's best family owned recreational resorts, offers it's gorgeous 15 acre property for public sale. It has everything you need to continue as a RESORT or can easily be converted to a FAMILY RETREAT. It is turn key offering seclusion and tranquility, with 583 feet of shoreline on Jessie Lake (1740 acres). Included are 3 private year round cabins (sold completely furnished and with air conditioning), 2 personal year round homes/cabins to live in or rent out, and 2 build sites, ready to be added. There are 3 campsites, 2 big pole buildings (totaling near 3,000 sq ft), a merchandise shack (with current apparel), a fish cleaning house (everything included), and a bath house. The resort has a long standing reputation for cleanliness and hospitality. It has a strong repeat business, with over 90% occupancy during the summer months. Enjoy fishing? Loon's Landing is available year round for summer or winter activities and is located close to Red lake, Winnie, and Leech lakes.

**Additional Details:**

Year Built	2001
Lot Acres	15.5
Lot Dimensions	irregular
Garage Stalls	6
School District	317
Taxes	\$649
Taxes with Assessments	\$892
Tax Year	2025

**Additional Features:**

**Fuel:** Propane **Heat:** Ductless Mini-Split, Forced Air

**Driving Directions:**

Take highway 6 north of Deer River for 20 miles, then left on county road 4 for 1.5 miles, left on county road 134 for 1 mile. Property is on the right.



Listed By:  
Century 21 Brainerd Realty

Affinity Real Estate Inc. participates in the Regional Multiple Listing Service of Minnesota, Inc Broker Reciprocity (sm) program, allowing us to display other broker's listings on our website. All properties are subject to prior sale, change or withdrawal.



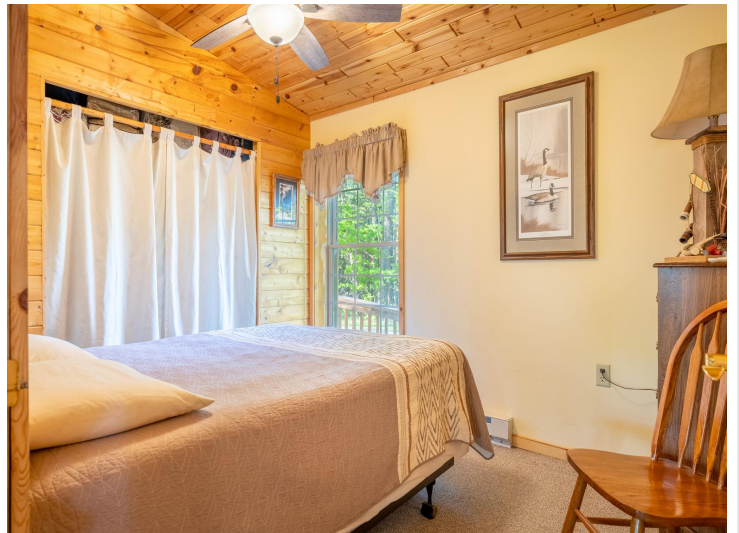
**Call Affinity Real Estate**

**218-237-3333**

**info@affinityrealestate.com**



**Affinity Real Estate - 600 Park Avenue South - Park Rapids MN 56470**



website: [www.AffinityRealEstate.com](http://www.AffinityRealEstate.com) | email: [info@affinityrealestate.com](mailto:info@affinityrealestate.com) | office: 218-237-3333 | fax: 218-237-3377

**Affinity**  
REAL ESTATE INC

**\$1,250,000**  
MLS 7064780 Commercial  
48989 County Rd 134  
Talmoo MN 56637



website: [www.AffinityRealEstate.com](http://www.AffinityRealEstate.com) | email: [info@affinityrealestate.com](mailto:info@affinityrealestate.com) | office: 218-237-3333 | fax: 218-237-3377

**Affinity**  
REAL ESTATE INC

**\$1,250,000**  
MLS 7064780 Commercial  
48989 County Rd 134  
Talmoon MN 56637



website: [www.AffinityRealEstate.com](http://www.AffinityRealEstate.com) | email: [info@affinityrealestate.com](mailto:info@affinityrealestate.com) | office: 218-237-3333 | fax:218-237-3377



**\$1,250,000**  
MLS 7064780 Commercial  
48989 County Rd 134  
Talmoo MN 56637



website: [www.AffinityRealEstate.com](http://www.AffinityRealEstate.com) | email: [info@affinityrealestate.com](mailto:info@affinityrealestate.com) | office: 218-237-3333 | fax: 218-237-3377

**Affinity**  
REAL ESTATE INC

**\$1,250,000**  
MLS 7064780 Commercial  
48989 County Rd 134  
Talmoo MN 56637



website: [www.AffinityRealEstate.com](http://www.AffinityRealEstate.com) | email: [info@affinityrealestate.com](mailto:info@affinityrealestate.com) | office: 218-237-3333 | fax:218-237-3377

**Affinity**  
REAL ESTATE INC

**\$1,250,000**  
MLS 7064780 Commercial  
48989 County Rd 134  
Talmoon MN 56637



website: [www.AffinityRealEstate.com](http://www.AffinityRealEstate.com) | email: [info@affinityrealestate.com](mailto:info@affinityrealestate.com) | office: 218-237-3333 | fax:218-237-3377

**Affinity**  
REAL ESTATE INC

**\$1,250,000**  
MLS 7064780 Commercial  
48989 County Rd 134  
Talmoo MN 56637



website: [www.AffinityRealEstate.com](http://www.AffinityRealEstate.com) | email: [info@affinityrealestate.com](mailto:info@affinityrealestate.com) | office: 218-237-3333 | fax: 218-237-3377

**Affinity**  
REAL ESTATE INC

**\$1,250,000**  
MLS 7064780 Commercial  
48989 County Rd 134  
Talmoon MN 56637



website: [www.AffinityRealEstate.com](http://www.AffinityRealEstate.com) | email: [info@affinityrealestate.com](mailto:info@affinityrealestate.com) | office: 218-237-3333 | fax:218-237-3377

**Affinity**  
REAL ESTATE INC

**\$1,250,000**  
MLS 7064780 Commercial  
48989 County Rd 134  
Talmoon MN 56637



website: [www.AffinityRealEstate.com](http://www.AffinityRealEstate.com) | email: [info@affinityrealestate.com](mailto:info@affinityrealestate.com) | office: 218-237-3333 | fax:218-237-3377



**\$1,250,000**  
MLS 7064780 Commercial  
48989 County Rd 134  
Talmoon MN 56637



website: [www.AffinityRealEstate.com](http://www.AffinityRealEstate.com) | email: [info@affinityrealestate.com](mailto:info@affinityrealestate.com) | office: 218-237-3333 | fax:218-237-3377



**\$1,250,000**  
MLS 7064780 Commercial  
48989 County Rd 134  
Talmoon MN 56637