

MLS 7064850 Land

\$99,000

5 Acres
Raw Land

TBD 213th Street
Little Falls MN 56345

Status: Active

Description:

This stunning 5+/- acre lot is a must-see for anyone looking to build their dream home in a beautiful, convenient location. Situated just a minute from Hwy 371, this property offers easy access while still providing the privacy and serenity of country living.

The corner lot features a road approach off a paved County Road or a gravel township road and already has fiber optic and electricity available at the road—making it ready for modern living. Heavily wooded for added privacy, the property sits upon a hill overlooking scenic agricultural fields, offering breathtaking sunset views you won't want to miss.

Whether you're planning your forever home or a peaceful getaway, this property combines natural beauty, accessibility, and endless potential.

Additional Details:

Year Built	1974
Lot Acres	5
Lot Dimensions	434x457
School District	482
Taxes	\$2,970
Taxes with Assessments	\$2,970
Tax Year	2026

Additional Features:

Driving Directions:

From Highway 371 get off onto 213th st going East, go 3/4 of a mile and property will be on the left side just west of 165th ave.



Listed By:
Edina Realty, Inc.

Affinity Real Estate Inc. participates in the Regional Multiple Listing Service of Minnesota, Inc Broker Reciprocity (sm) program, allowing us to display other broker's listings on our website. All properties are subject to prior sale, change or withdrawal.



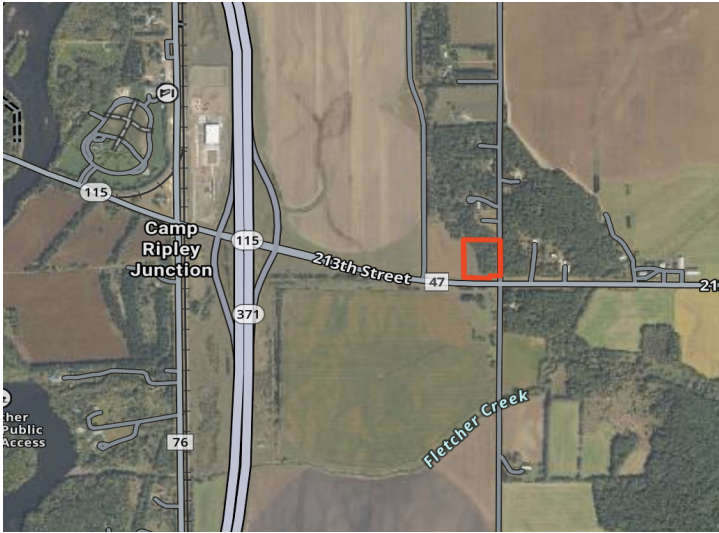
Call Affinity Real Estate

218-237-3333

info@affinityrealestate.com



Affinity Real Estate - 600 Park Avenue South - Park Rapids MN 56470



website: www.AffinityRealEstate.com | email: info@affinityrealestate.com | office: 218-237-3333 | fax:218-237-3377



\$99,000
MLS 7064850 Land
TBD 213th Street
Little Falls MN 56345