



MLS 7064865 Lake Home

\$399,900

1,350 sq ft
3 bedrooms
2 baths

25185 Moreau Road
Aitkin MN 56431

Waterfront: Upper Dean

Status: Active

Description:

Experience the best of lake life in every season at this charming Upper Dean Lake retreat. Spend summer days boating, fishing, and watching swans and loons drift by, then cozy up in winter with ice fishing, snowmobiling, skiing, and even the chance to catch the northern lights. Just minutes from Aitkin, Emily, Crosslake, and Crosby, you'll enjoy easy access to golf, dining, trails, state parks, and vibrant small-town events like parades, live music, and meat raffles. Unwind with stunning sunset views from the water's edge—perfect for grilling, birdwatching, or gathering around the fire pit. The oversized detached two-car garage offers ample space for vehicles, lake toys, or even a fun game room.

Additional Details:

Year Built	2000
Lot Acres	1.56
Lot Dimensions	200x375x187x360
Garage Stalls	3
School District	8001
Taxes	\$1,354
Taxes with Assessments	\$1,354
Tax Year	2025

Additional Features:

Basement: Block, Full **Fuel:** Propane, Wood **Garage:** 3 **Heat:** Baseboard, Boiler, Wood Stove **Sewer:** Private Sewer, Septic System Compliant - Yes **Water:** Private, Well **Air Conditioning:** Window Unit(s)

Driving Directions:

From Crosby head North on 6 to right on 36 to right on 105 to right on Moreau Road to property on left



Listed By:
GRAND PROPERTIES REAL ESTATE

Affinity Real Estate Inc. participates in the Regional Multiple Listing Service of Minnesota, Inc Broker Reciprocity (sm) program, allowing us to display other broker's listings on our website. All properties are subject to prior sale, change or withdrawal.



Call Affinity Real Estate

218-237-3333

info@affinityrealestate.com



Affinity Real Estate - 600 Park Avenue South - Park Rapids MN 56470



website: www.AffinityRealEstate.com | email: info@affinityrealestate.com | office: 218-237-3333 | fax:218-237-3377



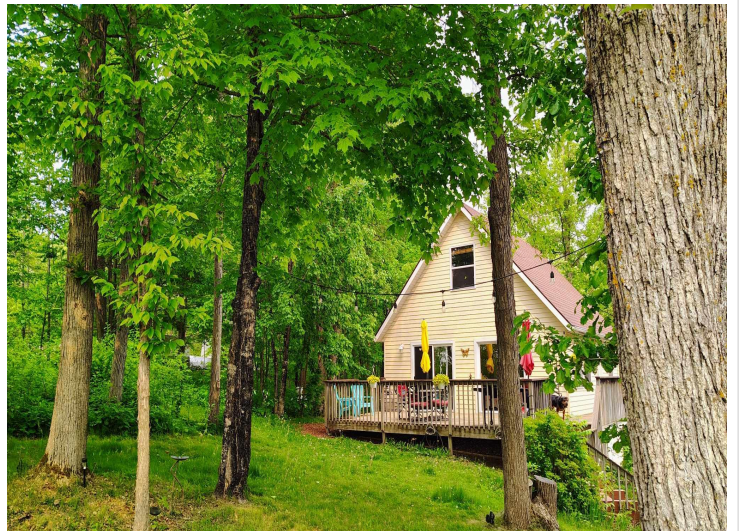
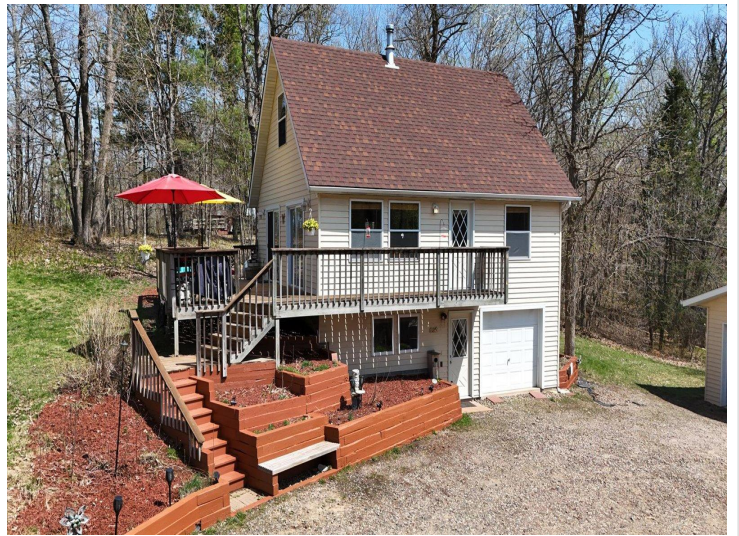
\$399,900
MLS 7064865 Lake Home
25185 Moreau Road
Aitkin MN 56431



website: www.AffinityRealEstate.com | email: info@affinityrealestate.com | office: 218-237-3333 | fax:218-237-3377

Affinity
REAL ESTATE INC

\$399,900
MLS 7064865 Lake Home
25185 Moreau Road
Aitkin MN 56431



website: www.AffinityRealEstate.com | email: info@affinityrealestate.com | office: 218-237-3333 | fax:218-237-3377

Affinity
REAL ESTATE INC

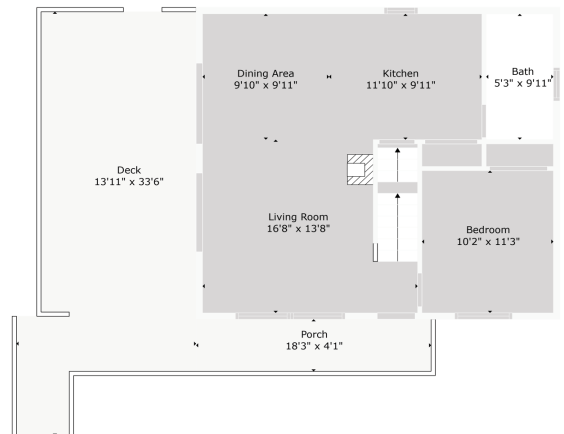
\$399,900
MLS 7064865 Lake Home
25185 Moreau Road
Aitkin MN 56431



website: www.AffinityRealEstate.com | email: info@affinityrealestate.com | office: 218-237-3333 | fax:218-237-3377

Affinity
REAL ESTATE INC

\$399,900
MLS 7064865 Lake Home
25185 Moreau Road
Aitkin MN 56431



TOTAL: 1323 sq. ft.
 FLOOR 1: 346 sq. ft., FLOOR 2: 1948 sq. ft., FLOOR 3: 333 sq. ft.
 EXCLUDED AREAS: GARAGE: 225 sq. ft., PORCH: 87 sq. ft., DECK: 371 sq. ft.,
 LOW CEILING: 144 sq. ft.

Floor Plan Created By: Cuttable App. Measurements Derived Digitally Available For Your Government.

website: www.AffinityRealEstate.com | email: info@affinityrealestate.com | office: 218-237-3333 | fax: 218-237-3377



\$399,900
 MLS 7064865 Lake Home
 25185 Moreau Road
 Aitkin MN 56431



website: www.AffinityRealEstate.com | email: info@affinityrealestate.com | office: 218-237-3333 | fax: 218-237-3377

Affinity
REAL ESTATE INC

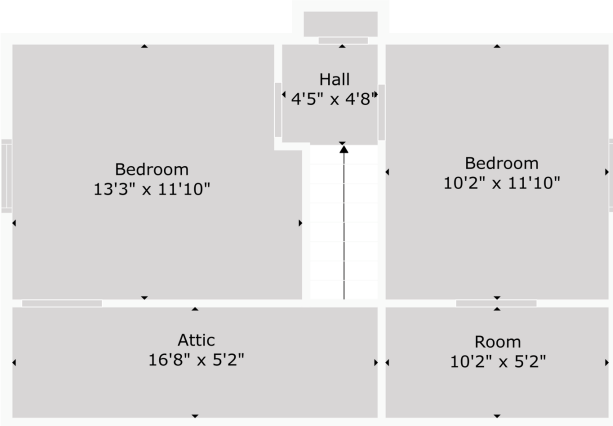
\$399,900
MLS 7064865 Lake Home
25185 Moreau Road
Aitkin MN 56431



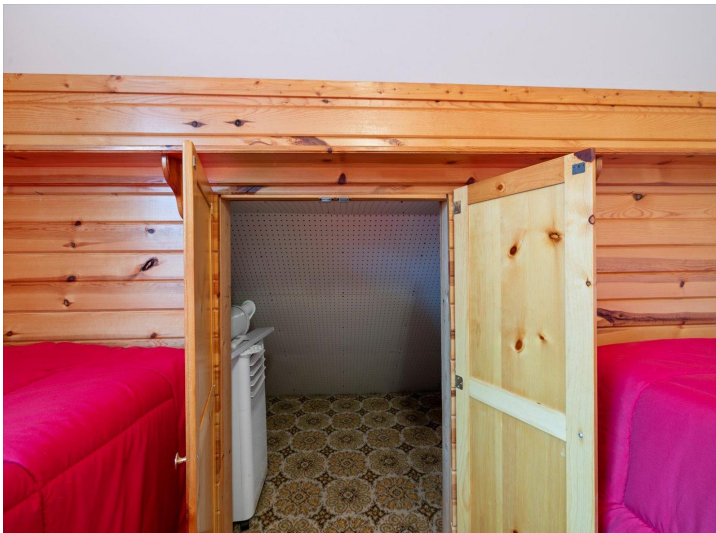
website: www.AffinityRealEstate.com | email: info@affinityrealestate.com | office: 218-237-3333 | fax: 218-237-3377

Affinity
REAL ESTATE INC

\$399,900
MLS 7064865 Lake Home
25185 Moreau Road
Aitkin MN 56431



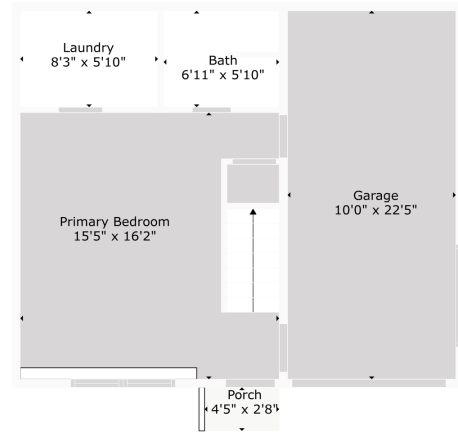
TOTAL: 1923 sq. ft.
 FLOOR 1: 146 sq. ft., FLOOR 2: 644 sq. ft., FLOOR 3: 333 sq. ft.
 EXCLUDED AREAS: GARAGE: 225 sq. ft., PORCH: 87 sq. ft., DECK: 371 sq. ft.,
 LOW CEILING: 144 sq. ft.
 Floor Plan Created By: Calixto App. Measurements Deemed Highly Reliable But Not Guaranteed.



website: www.AffinityRealEstate.com | email: info@affinityrealestate.com | office: 218-237-3333 | fax: 218-237-3377

Affinity
 REAL ESTATE INC

\$399,900
 MLS 7064865 Lake Home
 25185 Moreau Road
 Aitkin MN 56431



TOTAL: 1323 sq. ft.
 FLOOR 1: 346 sq. ft.; FLOOR 2: 194 sq. ft.; FLOOR 3: 333 sq. ft.
 EXCLUDED AREAS: GARAGE: 225 sq. ft.; PORCH: 87 sq. ft.; DECK: 371 sq. ft.
 LOW CEILING: 144 sq. ft.

Floor Plan Created By: Callisto App. Measurements Deemed Highly Accurate But Not Guaranteed.



website: www.AffinityRealEstate.com | email: info@affinityrealestate.com | office: 218-237-3333 | fax: 218-237-3377



\$399,900
 MLS 7064865 Lake Home
 25185 Moreau Road
 Aitkin MN 56431



website: www.AffinityRealEstate.com | email: info@affinityrealestate.com | office: 218-237-3333 | fax:218-237-3377



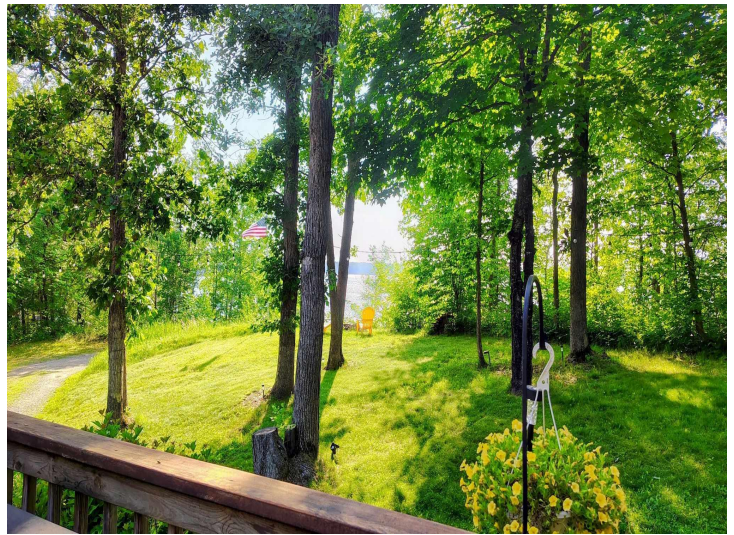
\$399,900
MLS 7064865 Lake Home
25185 Moreau Road
Aitkin MN 56431



website: www.AffinityRealEstate.com | email: info@affinityrealestate.com | office: 218-237-3333 | fax:218-237-3377



\$399,900
MLS 7064865 Lake Home
25185 Moreau Road
Aitkin MN 56431



website: www.AffinityRealEstate.com | email: info@affinityrealestate.com | office: 218-237-3333 | fax: 218-237-3377

Affinity
REAL ESTATE INC

\$399,900
MLS 7064865 Lake Home
25185 Moreau Road
Aitkin MN 56431



website: www.AffinityRealEstate.com | email: info@affinityrealestate.com | office: 218-237-3333 | fax:218-237-3377

Affinity
REAL ESTATE INC

\$399,900
MLS 7064865 Lake Home
25185 Moreau Road
Aitkin MN 56431



website: www.AffinityRealEstate.com | email: info@affinityrealestate.com | office: 218-237-3333 | fax:218-237-3377



\$399,900
MLS 7064865 Lake Home
25185 Moreau Road
Aitkin MN 56431