



MLS 7064893 Lake Home

**\$614,900**

2,794 sq ft  
4 bedrooms  
3 baths

9540 Lake Douglas Way  
Pequot Lakes MN 56472

Waterfront: Unnamed Lake

Status: Active

**Description:**

Look no further for your perfect home. This property features excellent privacy while still having all of the area amenities at your fingertips. The home showcases breathtaking views out of the two-story vaulted great room overlooking Lake Douglas and Deacons Lodge Golf Course. A large screened porch off of the kitchen offers the perfect setting for summer dinners with family or relaxing evenings enjoying views of the lake. The second story includes an oversized primary suite with ample storage and a private sitting area. The lower level features a secondary living room and 3 additional bedrooms. Situated in the hearth of Lake Country, you are a short walk or golf cart ride away from championship golf and multiple dining options and only a short drive away from some of the area's best lakes. This home was custom built for the lot with every detail in mind, you won't want to miss it!

**Additional Details:**

|                        |                       |
|------------------------|-----------------------|
| Year Built             | 2001                  |
| Lot Acres              | 0.96                  |
| Lot Dimensions         | 153 x 280 x 170 x 260 |
| Garage Stalls          | 3                     |
| School District        | 186                   |
| Taxes                  | \$3,763               |
| Taxes with Assessments | \$3,788               |
| Tax Year               | 2026                  |

**Additional Features:**

**Fuel:** Natural Gas **Heat:** Forced Air, Fireplace(s)

**Driving Directions:**

From the 4-way stop in Breezy Point head N on CR-11. Turn Right on Weavers Point Road. Turn Left on Douglas Dr and immediately turn Right on Douglas Way to the property on the left.



Listed By:  
Larson Group Real Estate/Kelle

Affinity Real Estate Inc. participates in the Regional Multiple Listing Service of Minnesota, Inc Broker Reciprocity (sm) program, allowing us to display other broker's listings on our website. All properties are subject to prior sale, change or withdrawal.



**Call Affinity Real Estate**

**218-237-3333**

**info@affinityrealestate.com**



**Affinity Real Estate - 600 Park Avenue South - Park Rapids MN 56470**



website: [www.AffinityRealEstate.com](http://www.AffinityRealEstate.com) | email: [info@affinityrealestate.com](mailto:info@affinityrealestate.com) | office: 218-237-3333 | fax:218-237-3377



**\$614,900**  
MLS 7064893 Lake Home  
9540 Lake Douglas Way  
Pequot Lakes MN 56472



website: [www.AffinityRealEstate.com](http://www.AffinityRealEstate.com) | email: [info@affinityrealestate.com](mailto:info@affinityrealestate.com) | office: 218-237-3333 | fax:218-237-3377

**Affinity**  
REAL ESTATE INC

**\$614,900**  
MLS 7064893 Lake Home  
9540 Lake Douglas Way  
Pequot Lakes MN 56472



website: [www.AffinityRealEstate.com](http://www.AffinityRealEstate.com) | email: [info@affinityrealestate.com](mailto:info@affinityrealestate.com) | office: 218-237-3333 | fax: 218-237-3377

**Affinity**  
REAL ESTATE INC

**\$614,900**  
MLS 7064893 Lake Home  
9540 Lake Douglas Way  
Pequot Lakes MN 56472



website: [www.AffinityRealEstate.com](http://www.AffinityRealEstate.com) | email: [info@affinityrealestate.com](mailto:info@affinityrealestate.com) | office: 218-237-3333 | fax: 218-237-3377

**Affinity**  
REAL ESTATE INC

**\$614,900**  
MLS 7064893 Lake Home  
9540 Lake Douglas Way  
Pequot Lakes MN 56472



website: [www.AffinityRealEstate.com](http://www.AffinityRealEstate.com) | email: [info@affinityrealestate.com](mailto:info@affinityrealestate.com) | office: 218-237-3333 | fax:218-237-3377

**Affinity**  
REAL ESTATE INC

**\$614,900**  
MLS 7064893 Lake Home  
9540 Lake Douglas Way  
Pequot Lakes MN 56472



website: [www.AffinityRealEstate.com](http://www.AffinityRealEstate.com) | email: [info@affinityrealestate.com](mailto:info@affinityrealestate.com) | office: 218-237-3333 | fax:218-237-3377



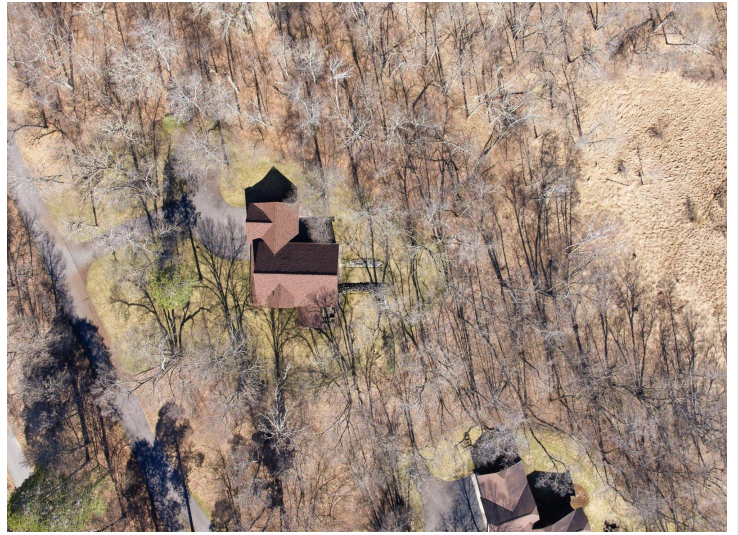
**\$614,900**  
MLS 7064893 Lake Home  
9540 Lake Douglas Way  
Pequot Lakes MN 56472



website: [www.AffinityRealEstate.com](http://www.AffinityRealEstate.com) | email: [info@affinityrealestate.com](mailto:info@affinityrealestate.com) | office: 218-237-3333 | fax:218-237-3377



**\$614,900**  
MLS 7064893 Lake Home  
9540 Lake Douglas Way  
Pequot Lakes MN 56472



website: [www.AffinityRealEstate.com](http://www.AffinityRealEstate.com) | email: [info@affinityrealestate.com](mailto:info@affinityrealestate.com) | office: 218-237-3333 | fax:218-237-3377



**\$614,900**  
MLS 7064893 Lake Home  
9540 Lake Douglas Way  
Pequot Lakes MN 56472