



MLS 7064907 Lake Home

\$639,900

2,581 sq ft
2 bedrooms
2 baths

20010 Reed Court
Bemidji MN 56601

Waterfront: Long Lake (Liberty
Twp.)

Status: Active

Description:

Experience the best of lake living with this stunning Long Lake property, offering 8.18 private acres and an impressive 346 feet of level shoreline on a beautiful 697-acre lake. Just 20 minutes from Bemidji, this home combines peaceful seclusion with convenient access to town. The outdoor setting is designed for relaxation and entertaining, featuring multiple paver patio spaces—including a screened-in area with 4'X8' granite table on a custom made powder coated steel base perfect for enjoying evenings by the water. The property also includes a storage shed, durable metal siding, and breathtaking lake views in a truly private setting. Inside, the home showcases a custom kitchen with maple cabinetry, a large center island, breakfast bar, and abundant storage. A dedicated dining area flows into a spacious sunroom overlooking the lake, creating the perfect gathering space. The main level also offers a cozy living room with a gas fireplace, a separate family room with built-in shelving, main level laundry, and a mudroom for added convenience. Unwind in the luxurious main level bathroom featuring a sauna and Jacuzzi tub. Upstairs, you'll find a generous primary bedroom with a massive walk-in closet, a second bedroom with ample sleeping space, and a beautifully remodeled full bathroom (2024). Additional highlights include a two-stall insulated and heated garage and a new in 2024 2 unit mini-split AC heat pump system for year-round comfort. This is a rare opportunity to own a private lakeside retreat with space, comfort, and incredible views—perfect as a year-round home or getaway.

Additional Details:

Year Built	1981
Lot Acres	8.18
Lot Dimensions	See aerial map
Garage Stalls	2
School District	31
Taxes	\$5,815
Taxes with Assessments	\$6,006
Tax Year	2026

Additional Features:

Fuel: Electric, Propane **Heat:** Baseboard, Fireplace(s), Heat Pump, In-Floor Heating, Radiant

Driving Directions:

From Bemidji, MN, follow US Highway 101 North to a left onto Old Long Lake Road NW and follow to a left into Reed Court NW and follow to a left into 20010 Reed Court NW

Affinity Real Estate Inc. participates in the Regional Multiple Listing Service of Minnesota, Inc Broker Reciprocity (sm) program, allowing us to display other broker's listings on our website. All properties are subject to prior sale, change or withdrawal.

Listed By:
Edina Realty, Inc



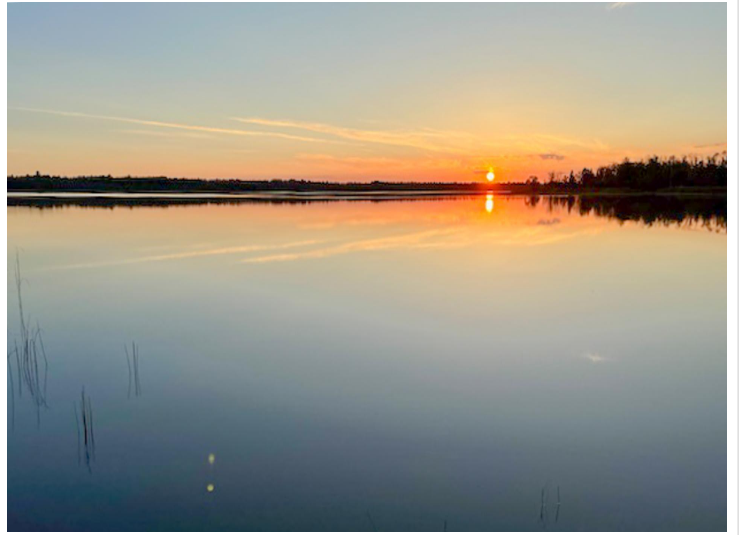
Call Affinity Real Estate

218-237-3333

info@affinityrealestate.com



Affinity Real Estate - 600 Park Avenue South - Park Rapids MN 56470



website: www.AffinityRealEstate.com | email: info@affinityrealestate.com | office: 218-237-3333 | fax:218-237-3377



\$639,900
MLS 7064907 Lake Home
20010 Reed Court
Bemidji MN 56601



website: www.AffinityRealEstate.com | email: info@affinityrealestate.com | office: 218-237-3333 | fax:218-237-3377

Affinity
REAL ESTATE INC

\$639,900
MLS 7064907 Lake Home
20010 Reed Court
Bemidji MN 56601



website: www.AffinityRealEstate.com | email: info@affinityrealestate.com | office: 218-237-3333 | fax:218-237-3377

Affinity
REAL ESTATE INC

\$639,900
MLS 7064907 Lake Home
20010 Reed Court
Bemidji MN 56601



website: www.AffinityRealEstate.com | email: info@affinityrealestate.com | office: 218-237-3333 | fax:218-237-3377

Affinity
REAL ESTATE INC

\$639,900
MLS 7064907 Lake Home
20010 Reed Court
Bemidji MN 56601



website: www.AffinityRealEstate.com | email: info@affinityrealestate.com | office: 218-237-3333 | fax:218-237-3377



\$639,900
MLS 7064907 Lake Home
20010 Reed Court
Bemidji MN 56601



website: www.AffinityRealEstate.com | email: info@affinityrealestate.com | office: 218-237-3333 | fax:218-237-3377

Affinity
REAL ESTATE INC

\$639,900
MLS 7064907 Lake Home
20010 Reed Court
Bemidji MN 56601



website: www.AffinityRealEstate.com | email: info@affinityrealestate.com | office: 218-237-3333 | fax:218-237-3377

Affinity
REAL ESTATE INC

\$639,900
MLS 7064907 Lake Home
20010 Reed Court
Bemidji MN 56601



website: www.AffinityRealEstate.com | email: info@affinityrealestate.com | office: 218-237-3333 | fax:218-237-3377

Affinity
REAL ESTATE INC

\$639,900
MLS 7064907 Lake Home
20010 Reed Court
Bemidji MN 56601



website: www.AffinityRealEstate.com | email: info@affinityrealestate.com | office: 218-237-3333 | fax:218-237-3377

Affinity
REAL ESTATE INC

\$639,900
MLS 7064907 Lake Home
20010 Reed Court
Bemidji MN 56601



website: www.AffinityRealEstate.com | email: info@affinityrealestate.com | office: 218-237-3333 | fax:218-237-3377

Affinity
REAL ESTATE INC

\$639,900
MLS 7064907 Lake Home
20010 Reed Court
Bemidji MN 56601



website: www.AffinityRealEstate.com | email: info@affinityrealestate.com | office: 218-237-3333 | fax:218-237-3377

Affinity
REAL ESTATE INC

\$639,900
MLS 7064907 Lake Home
20010 Reed Court
Bemidji MN 56601



website: www.AffinityRealEstate.com | email: info@affinityrealestate.com | office: 218-237-3333 | fax:218-237-3377

Affinity
REAL ESTATE INC

\$639,900
MLS 7064907 Lake Home
20010 Reed Court
Bemidji MN 56601



website: www.AffinityRealEstate.com | email: info@affinityrealestate.com | office: 218-237-3333 | fax:218-237-3377

Affinity
REAL ESTATE INC

\$639,900
MLS 7064907 Lake Home
20010 Reed Court
Bemidji MN 56601



FIGURE 1
 GROSS INTERNAL AREA
 ROOM 11 1200 SQ. FT. (2000) 2000 SQ. FT. (2000)
 BOLLIGER, MAINT. JANUARY 2011 141.4
 2000, 2000 SQ. FT.

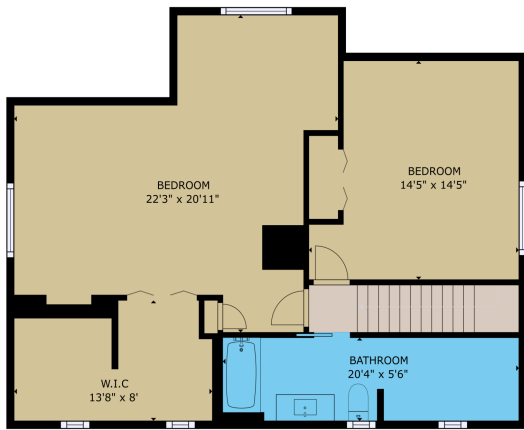


FIGURE 2
 GROSS INTERNAL AREA
 ROOM 11 1200 SQ. FT. (2000) 2000 SQ. FT. (2000)
 BOLLIGER, MAINT. JANUARY 2011 141.4
 2000, 2000 SQ. FT.



website: www.AffinityRealEstate.com | email: info@affinityrealestate.com | office: 218-237-3333 | fax: 218-237-3377



\$639,900
 MLS 7064907 Lake Home
 20010 Reed Court
 Bemidji MN 56601