



MLS 7065003 Lake Land

**\$219,900**

**Description:**

4.63-acre lot on Birch Lake ready for your summer plans! This beautiful property offers an ideal setting to build your dream home or cabin getaway. Enjoy peaceful, private lake living with plenty of space to relax, explore, and take in the natural surroundings.

With ample acreage and a serene setting, this property provides the perfect balance of seclusion and recreation. Opportunities like this are rare — don't miss your chance to own a slice of lakeside paradise!  
Also, All owners own 1/13 of Block 9.

**Additional Details:**

Lot Acres	4.63
Lot Dimensions	203x466.7x200.49x416.21 134x467.4x267.55x473.39
School District	8001
Taxes	\$162
Taxes with Assessments	\$162
Tax Year	2026

**Additional Features:**

**Driving Directions:**

From Garrison, go north on 169 to North (left) onto 450th Ave. Turn right to continue north on 450th Ave to 242nd Ln on the left.



Listed By:  
RE/MAX Results - Nisswa

Affinity Real Estate Inc. participates in the Regional Multiple Listing Service of Minnesota, Inc Broker Reciprocity (sm) program, allowing us to display other broker's listings on our website. All properties are subject to prior sale, change or withdrawal.



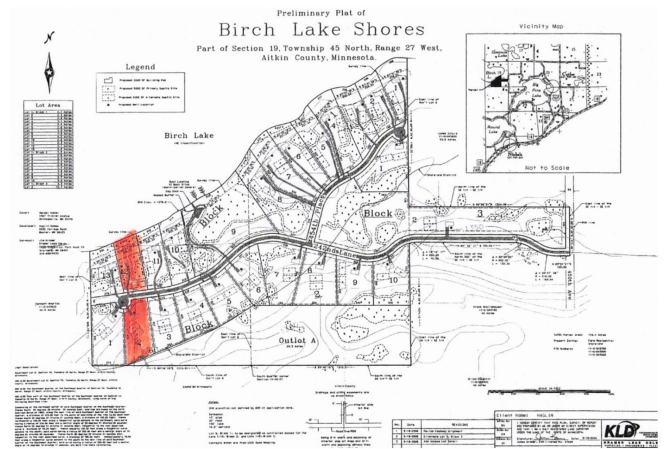
**Call Affinity Real Estate**

**218-237-3333**

**info@affinityrealestate.com**



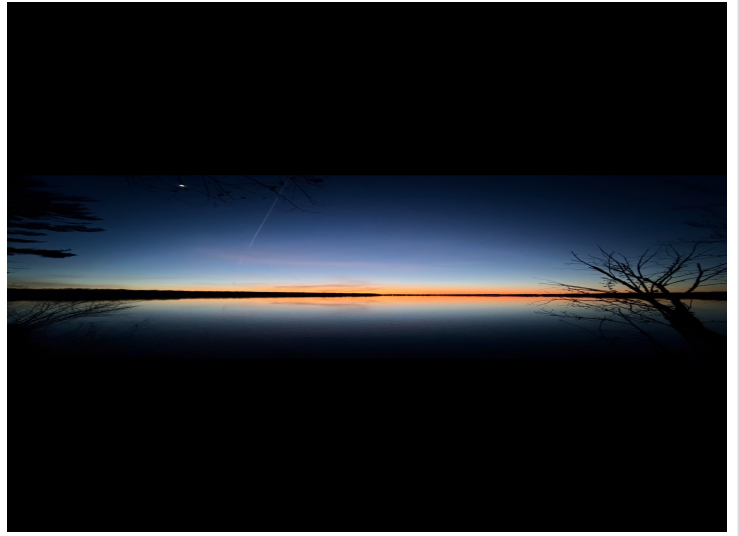
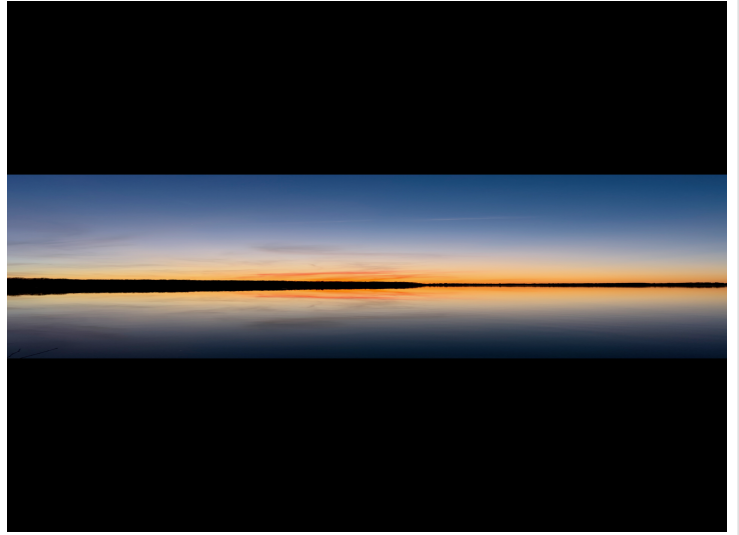
**Affinity Real Estate - 600 Park Avenue South - Park Rapids MN 56470**



website: [www.AffinityRealEstate.com](http://www.AffinityRealEstate.com) | email: [info@affinityrealestate.com](mailto:info@affinityrealestate.com) | office: 218-237-3333 | fax: 218-237-3377



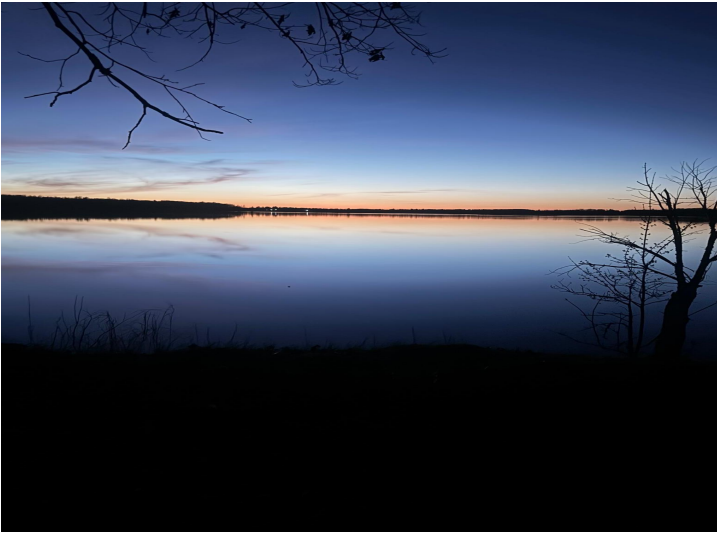
**\$219,900**  
MLS 7065003 Lake Land  
Lot 2 & 12 242nd Lane  
Aitkin MN 56431



website: [www.AffinityRealEstate.com](http://www.AffinityRealEstate.com) | email: [info@affinityrealestate.com](mailto:info@affinityrealestate.com) | office: 218-237-3333 | fax:218-237-3377



**\$219,900**  
MLS 7065003 Lake Land  
Lot 2 & 12 242nd Lane  
Aitkin MN 56431



website: [www.AffinityRealEstate.com](http://www.AffinityRealEstate.com) | email: [info@affinityrealestate.com](mailto:info@affinityrealestate.com) | office: 218-237-3333 | fax: 218-237-3377



**\$219,900**  
MLS 7065003 Lake Land  
Lot 2 & 12 242nd Lane  
Aitkin MN 56431