



MLS 7065091 Lake Home

\$369,900

384 sq ft
1 bedrooms
0 baths

16504 280th Street
Park Rapids MN 56470

Waterfront: Skunk

Status: Active

Description:

Escape to tranquility with this rare 22-acre private lake lot, a paradise for nature lovers that offers unmatched privacy and serenity. Whether you're dreaming of a secluded weekend getaway or planning your future build, this property has everything you need. Enjoy peaceful mornings by the water and endless recreational opportunities, including kayaking, fishing, swimming, and more. An off-grid cabin is already on-site, providing a cozy place to relax and unwind. Additionally, there is a versatile pole building that can be used for storage, as a workshop, or modified to suit your needs. There's plenty of room for boats, ATVs, and tools. With 22 sprawling acres of woods, trails, and open space, you'll have privacy and ample space for future development or conservation. Schedule a private tour today and envision the possibilities!

Additional Details:

Year Built	1980
Lot Acres	22.9
Lot Dimensions	Irregular
Garage Stalls	2
School District	309
Taxes	\$1,868
Taxes with Assessments	\$1,868
Tax Year	2025

Additional Features:

Fuel: Wood **Heat:** Wood Stove

Driving Directions:

From 34/71 in Park Rapids, East on 34 to a left (North) on County 4. Take Left at Emmaville store and follow minimum maintenance road. Follow to gate. Take right to property. See OnX Hunt Map in photos.



Listed By:
Wolff & Simon Real Estate

Affinity Real Estate Inc. participates in the Regional Multiple Listing Service of Minnesota, Inc Broker Reciprocity (sm) program, allowing us to display other broker's listings on our website. All properties are subject to prior sale, change or withdrawal.



Call Affinity Real Estate

218-237-3333

info@affinityrealestate.com



Affinity Real Estate - 600 Park Avenue South - Park Rapids MN 56470



website: www.AffinityRealEstate.com | email: info@affinityrealestate.com | office: 218-237-3333 | fax:218-237-3377

Affinity
REAL ESTATE INC

\$369,900
MLS 7065091 Lake Home
16504 280th Street
Park Rapids MN 56470



website: www.AffinityRealEstate.com | email: info@affinityrealestate.com | office: 218-237-3333 | fax:218-237-3377

Affinity
REAL ESTATE INC

\$369,900
MLS 7065091 Lake Home
16504 280th Street
Park Rapids MN 56470



website: www.AffinityRealEstate.com | email: info@affinityrealestate.com | office: 218-237-3333 | fax: 218-237-3377

Affinity
REAL ESTATE INC

\$369,900
MLS 7065091 Lake Home
16504 280th Street
Park Rapids MN 56470



website: www.AffinityRealEstate.com | email: info@affinityrealestate.com | office: 218-237-3333 | fax:218-237-3377



\$369,900
MLS 7065091 Lake Home
16504 280th Street
Park Rapids MN 56470



website: www.AffinityRealEstate.com | email: info@affinityrealestate.com | office: 218-237-3333 | fax:218-237-3377



\$369,900
MLS 7065091 Lake Home
16504 280th Street
Park Rapids MN 56470



website: www.AffinityRealEstate.com | email: info@affinityrealestate.com | office: 218-237-3333 | fax:218-237-3377



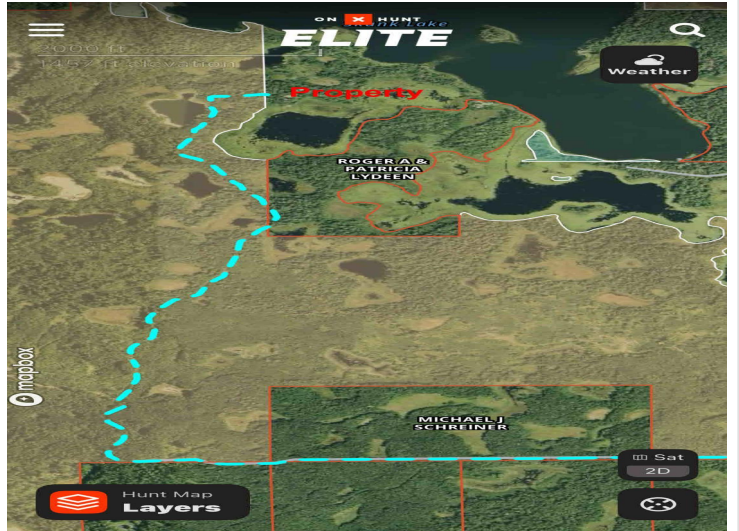
\$369,900
MLS 7065091 Lake Home
16504 280th Street
Park Rapids MN 56470



website: www.AffinityRealEstate.com | email: info@affinityrealestate.com | office: 218-237-3333 | fax:218-237-3377



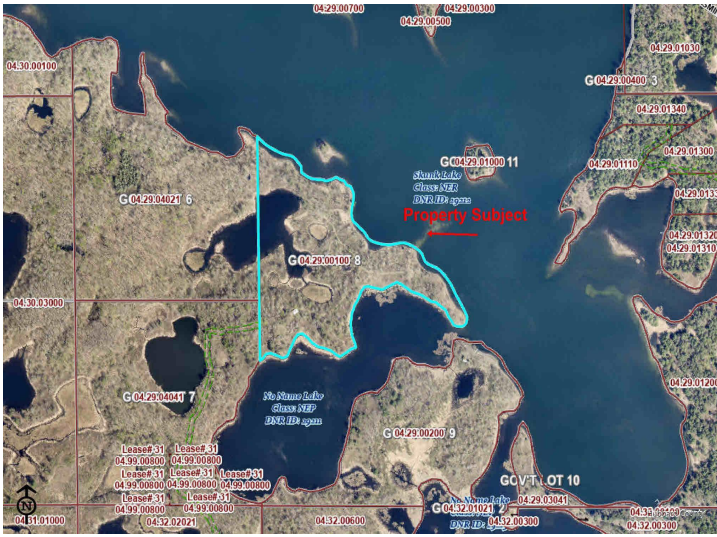
\$369,900
MLS 7065091 Lake Home
16504 280th Street
Park Rapids MN 56470



website: www.AffinityRealEstate.com | email: info@affinityrealestate.com | office: 218-237-3333 | fax:218-237-3377



\$369,900
MLS 7065091 Lake Home
16504 280th Street
Park Rapids MN 56470



website: www.AffinityRealEstate.com | email: info@affinityrealestate.com | office: 218-237-3333 | fax:218-237-3377



\$369,900
 MLS 7065091 Lake Home
 16504 280th Street
 Park Rapids MN 56470