



MLS 7065247 Land

\$110,000

11.8 Acres
Raw Land

ABC Kaywood Drive
Park Rapids MN 56470

Status: Active

Description:

This gorgeous offering spans nearly 12 acres and provides the ultimate canvas for your next home. It is incredibly scenic and fully wooded with an unbelievable display of Norway pines. There are several exceptional building sites throughout. Prime location on the north edge of town adjacent to Kaywood Addition. It offers excellent access with frontage on both Kaywood Drive (south boundary) and Henrietta Avenue (east boundary). Enjoy the freedom of a property with no restrictive covenants and total privacy. A grand opportunity for those seeking a country feel without sacrificing proximity to city amenities.

Additional Details:

Lot Acres	11.8
Lot Dimensions	400 x irr
School District	309
Taxes	\$656
Taxes with Assessments	\$655
Tax Year	2026

Additional Features:

Driving Directions:

From First St (Hwy 34) at Henrietta Ave: Go North on Henrietta to a left on Kaywood Dr. Proceed to property on right.



Listed By:
Affinity Real Estate Inc.

Affinity Real Estate Inc. participates in the Regional Multiple Listing Service of Minnesota, Inc Broker Reciprocity (sm) program, allowing us to display other broker's listings on our website. All properties are subject to prior sale, change or withdrawal.



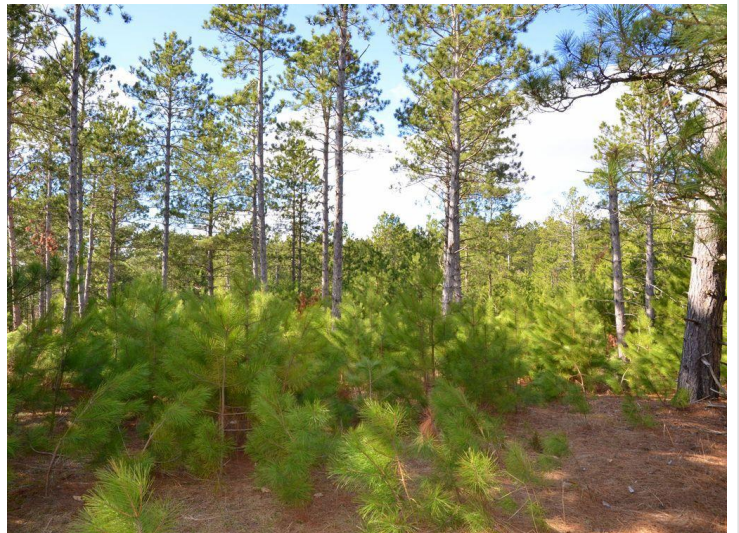
Call Affinity Real Estate

218-237-3333

info@affinityrealestate.com



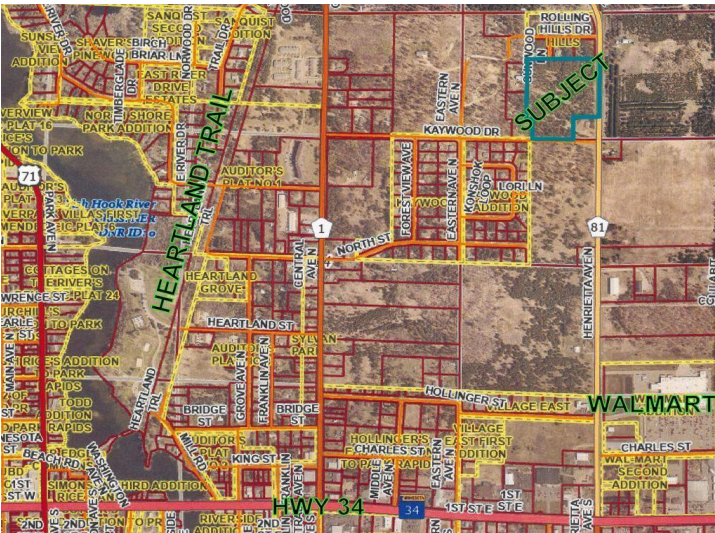
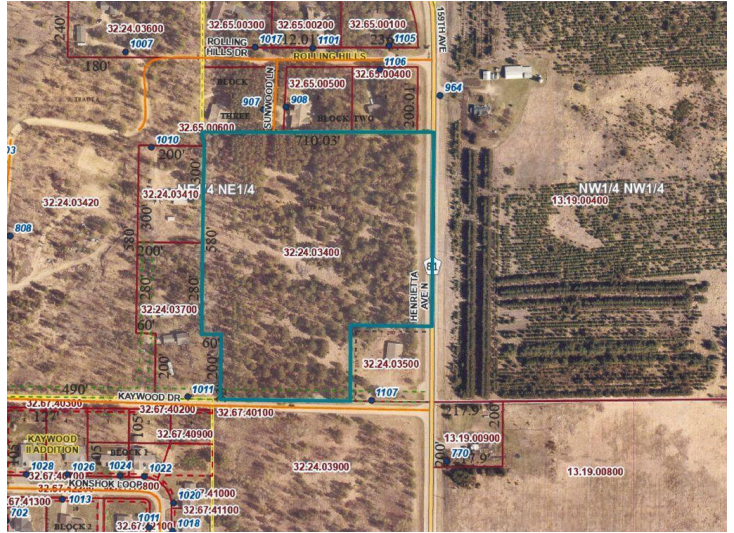
Affinity Real Estate - 600 Park Avenue South - Park Rapids MN 56470



website: www.AffinityRealEstate.com | email: info@affinityrealestate.com | office: 218-237-3333 | fax:218-237-3377



\$110,000
MLS 7065247 Land
ABC Kaywood Drive
Park Rapids MN 56470



website: www.AffinityRealEstate.com | email: info@affinityrealestate.com | office: 218-237-3333 | fax:218-237-3377



\$110,000
 MLS 7065247 Land
 ABC Kaywood Drive
 Park Rapids MN 56470