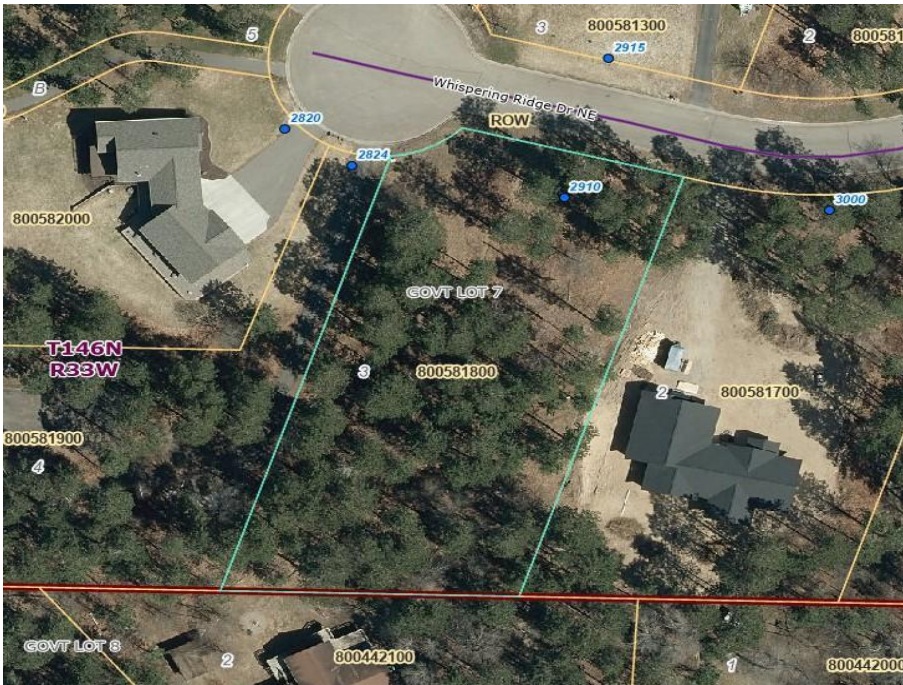




MLS 7065272 Lake Land

\$115,000



Description:

The last lot in The Pines is available for your new home!
This one-acre lot includes shared ownership to over 700' of Lake Bemidji shoreline, 4.3 acres, and a dedicated unit in the storage building. Also included is shared ownership of the dock and slip space for your boat!
This lot gives the owners direct access to the paved Paul Bunyan Trail and all that has to offer for biking, walking, roller blading and snowmobiling!

Additional Details:

Lot Acres	1
Lot Dimensions	155x285'
School District	31
Taxes	\$1,496
Taxes with Assessments	\$1,496
Tax Year	2026

Additional Features:

Driving Directions:

Paul Bunyan Dr to First St SE, left on Lake Ave NE, left on Whispering Ridge Dr NE.



Listed By:
Century 21 Dickinson

Affinity Real Estate Inc. participates in the Regional Multiple Listing Service of Minnesota, Inc Broker Reciprocity (sm) program, allowing us to display other broker's listings on our website. All properties are subject to prior sale, change or withdrawal.



Call Affinity Real Estate

218-237-3333

info@affinityrealestate.com



Affinity Real Estate - 600 Park Avenue South - Park Rapids MN 56470



website: www.AffinityRealEstate.com | email: info@affinityrealestate.com | office: 218-237-3333 | fax: 218-237-3377



\$115,000
MLS 7065272 Lake Land
2910 Whispering Ridge Drive
Bemidji MN 56601