



MLS 7065323 Residential

\$399,000

3,174 sq ft
4 bedrooms
4 baths

12151 435th Street
Fertile MN 56540

Status: Active

Description:

Stunning country property overlooking the Sandhill River, set on 3.3 private acres. This beautifully updated home features 4 bedrooms and 3 bathrooms across two finished levels. The main floor offers a private master suite with en suite three-quarter bath, an additional bedroom, a dedicated office, and convenient main floor laundry. The finished lower level terrace walkout adds two more bedrooms, a living room, and a three-quarter bath -- ideal for guests or extended family. Many updates throughout the home inside and out. The detached shop is a standout feature, offering a three-stall heated garage with a connected office and bathroom, plus two additional unfinished stalls ready for your vision. A rare opportunity to own a move-in ready country estate with exceptional outdoor amenities and breathtaking river views.

Additional Details:

Year Built	1967
Lot Acres	3.39
Lot Dimensions	irreg
Garage Stalls	5
School District	599
Taxes	\$2,478
Taxes with Assessments	\$2,808
Tax Year	2025

Additional Features:

Basement: Walkout **Fuel:** Oil **Garage:** 5 **Heat:** Heat Pump **Sewer:** Septic System Compliant - Yes **Water:** Well **Air Conditioning:** Central Air

Driving Directions:

In Fertile go W on 435th St SW to 130th Ave SW



Listed By:
Greenberg Realty

Affinity Real Estate Inc. participates in the Regional Multiple Listing Service of Minnesota, Inc Broker Reciprocity (sm) program, allowing us to display other broker's listings on our website. All properties are subject to prior sale, change or withdrawal.



Call Affinity Real Estate

218-237-3333

info@affinityrealestate.com



Affinity Real Estate - 600 Park Avenue South - Park Rapids MN 56470



website: www.AffinityRealEstate.com | email: info@affinityrealestate.com | office: 218-237-3333 | fax:218-237-3377



\$399,000
MLS 7065323 Residential
12151 435th Street
Fertile MN 56540



website: www.AffinityRealEstate.com | email: info@affinityrealestate.com | office: 218-237-3333 | fax: 218-237-3377

Affinity
REAL ESTATE INC

\$399,000
MLS 7065323 Residential
12151 435th Street
Fertile MN 56540



website: www.AffinityRealEstate.com | email: info@affinityrealestate.com | office: 218-237-3333 | fax: 218-237-3377

Affinity
REAL ESTATE INC

\$399,000
MLS 7065323 Residential
12151 435th Street
Fertile MN 56540



website: www.AffinityRealEstate.com | email: info@affinityrealestate.com | office: 218-237-3333 | fax:218-237-3377



\$399,000
MLS 7065323 Residential
12151 435th Street
Fertile MN 56540



website: www.AffinityRealEstate.com | email: info@affinityrealestate.com | office: 218-237-3333 | fax:218-237-3377



\$399,000
MLS 7065323 Residential
12151 435th Street
Fertile MN 56540



website: www.AffinityRealEstate.com | email: info@affinityrealestate.com | office: 218-237-3333 | fax:218-237-3377

Affinity
REAL ESTATE INC

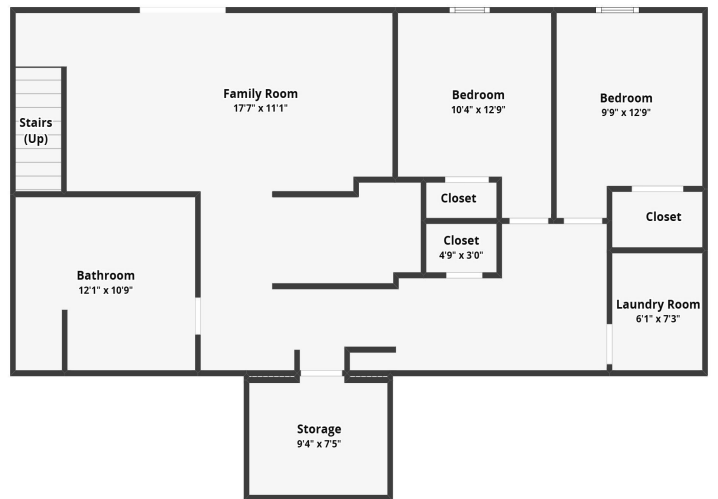
\$399,000
MLS 7065323 Residential
12151 435th Street
Fertile MN 56540



website: www.AffinityRealEstate.com | email: info@affinityrealestate.com | office: 218-237-3333 | fax: 218-237-3377

Affinity
REAL ESTATE INC

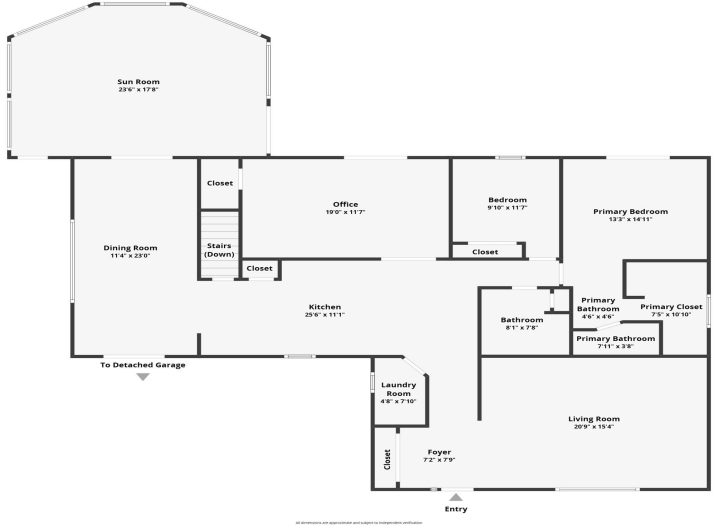
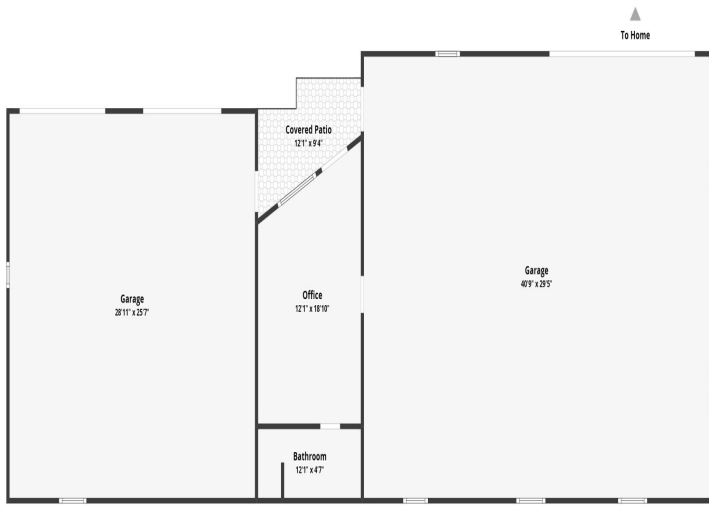
\$399,000
MLS 7065323 Residential
12151 435th Street
Fertile MN 56540



website: www.AffinityRealEstate.com | email: info@affinityrealestate.com | office: 218-237-3333 | fax: 218-237-3377



\$399,000
 MLS 7065323 Residential
 12151 435th Street
 Fertile MN 56540



website: www.AffinityRealEstate.com | email: info@affinityrealestate.com | office: 218-237-3333 | fax:218-237-3377



\$399,000
 MLS 7065323 Residential
 12151 435th Street
 Fertile MN 56540