



MLS 7065343 Residential

\$319,900

2,384 sq ft
4 bedrooms
3 baths

31435 Isabelle Drive
Pequot Lakes MN 56472

Status: Coming Soon

Description:

Welcome home to this impeccable 4-bedroom 3- bath home resting on a double lot in the heart of Pequot Lakes located right off the Paul Bunyan Bike Trail. The main floor offers a sun filled experience, with an updated kitchen, spacious living room, two bedrooms, full bath, laundry, and a generous sized private deck that is fantastic for summer BBQ's and gatherings. The walkout lower level you will find the primary bedroom with a 3/4 private bathroom, plus an additional bedroom, family room that could double as an office or workout room, and a full bath. You will find ample storage in the home, with many closets and storage nooks. This well cared for home is situated on a dead-end road which makes the neighborhood very quiet, just an easy walk to Pequot Lakes, and a great sledding hill for all. The adjacent lot does offer plenty of room to build your garage if so desired. If you have been searching for a spectacular home in the Pequot Lakes School District, this one is a must see.

Additional Details:

Year Built	2007
Lot Acres	0.22
Lot Dimensions	100x86x100x92
School District	186
Taxes	\$2,369
Taxes with Assessments	\$2,486
Tax Year	2026

Additional Features:

Basement: Block, Egress Window(s), Finished, Full, Walkout **Fuel:** Natural Gas **Heat:** Forced Air **Sewer:** City Sewer/Connected **Water:** City Water/Connected **Air Conditioning:** Central Air

Driving Directions:

From the stoplight in Pequot Lakes go east on Main Street to left on Rasmussen Road to left on Isabella Drive to the home on the left.



Listed By:
Edina Realty, Inc.

Affinity Real Estate Inc. participates in the Regional Multiple Listing Service of Minnesota, Inc Broker Reciprocity (sm) program, allowing us to display other broker's listings on our website. All properties are subject to prior sale, change or withdrawal.



Call Affinity Real Estate

218-237-3333

info@affinityrealestate.com



Affinity Real Estate - 600 Park Avenue South - Park Rapids MN 56470



website: www.AffinityRealEstate.com | email: info@affinityrealestate.com | office: 218-237-3333 | fax:218-237-3377



\$319,900
MLS 7065343 Residential
31435 Isabelle Drive
Pequot Lakes MN 56472



website: www.AffinityRealEstate.com | email: info@affinityrealestate.com | office: 218-237-3333 | fax:218-237-3377

Affinity
REAL ESTATE INC

\$319,900
MLS 7065343 Residential
31435 Isabelle Drive
Pequot Lakes MN 56472



website: www.AffinityRealEstate.com | email: info@affinityrealestate.com | office: 218-237-3333 | fax:218-237-3377

Affinity
REAL ESTATE INC

\$319,900
MLS 7065343 Residential
31435 Isabelle Drive
Pequot Lakes MN 56472



website: www.AffinityRealEstate.com | email: info@affinityrealestate.com | office: 218-237-3333 | fax:218-237-3377

Affinity
REAL ESTATE INC

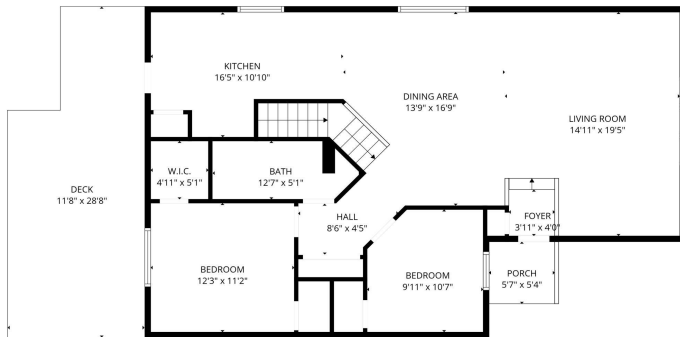
\$319,900
MLS 7065343 Residential
31435 Isabelle Drive
Pequot Lakes MN 56472



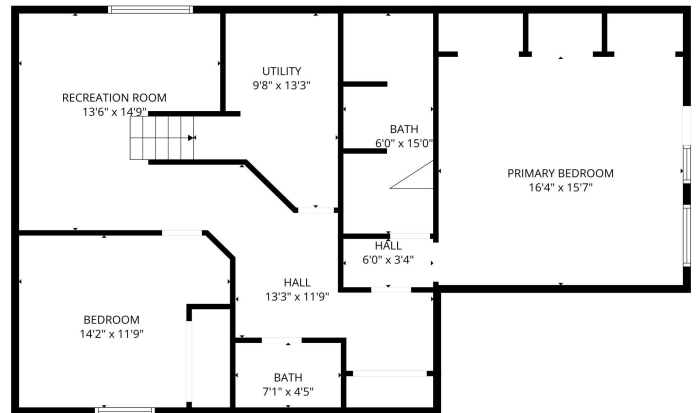
website: www.AffinityRealEstate.com | email: info@affinityrealestate.com | office: 218-237-3333 | fax:218-237-3377



\$319,900
MLS 7065343 Residential
31435 Isabelle Drive
Pequot Lakes MN 56472



FLOOR PLAN CREATED BY CUBICASA APP. MEASUREMENTS DEEMED HIGHLY RELIABLE BUT NOT GUARANTEED.



FLOOR PLAN CREATED BY CUBICASA APP. MEASUREMENTS DEEMED HIGHLY RELIABLE BUT NOT GUARANTEED.

website: www.AffinityRealEstate.com | email: info@affinityrealestate.com | office: 218-237-3333 | fax: 218-237-3377



\$319,900
 MLS 7065343 Residential
 31435 Isabelle Drive
 Pequot Lakes MN 56472



website: www.AffinityRealEstate.com | email: info@affinityrealestate.com | office: 218-237-3333 | fax:218-237-3377



\$319,900
MLS 7065343 Residential
31435 Isabelle Drive
Pequot Lakes MN 56472