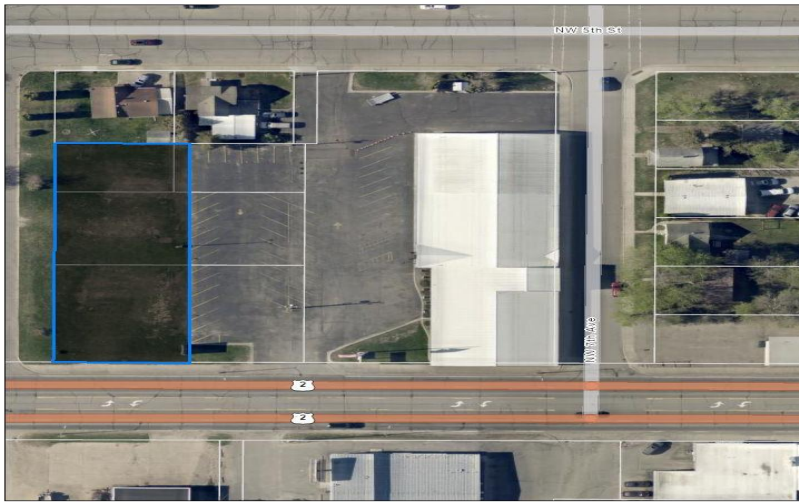


Sale Map pdf Exhibit A



4/27/2026, 9:55:31 AM
Roads
Tax Parcel
1:1,128
0 0.01 0.02 0.04 mi
0 0.01 0.02 0.04 km

This information is a compilation of data from different sources with varying degrees of accuracy and requires a qualified field survey to verify. Itasca County



MLS 7065535 Commercial

\$220,000

701 4th Street
Grand Rapids MN 55744

Status: Active

Description:

(description unavailable)

Additional Details:

Year Built	1958
Lot Acres	0.42
Lot Dimensions	210' x 80'
Garage Stalls	1
School District	318
Taxes	\$5,516
Taxes with Assessments	\$26,448
Tax Year	2025

Additional Features:

Fuel: Other **Garage:** 1 **Heat:** Other **Sewer:** City Sewer/Connected **Water:** City Water - In Street

Driving Directions:

Hwy 2 West at the corner of 8th Ave.



Listed By:
WELLSON GROUP INC

Affinity Real Estate Inc. participates in the Regional Multiple Listing Service of Minnesota, Inc Broker Reciprocity (sm) program, allowing us to display other broker's listings on our website. All properties are subject to prior sale, change or withdrawal.



Call Affinity Real Estate

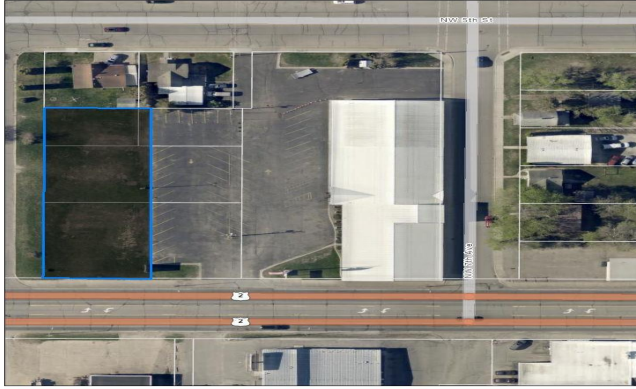
218-237-3333

info@affinityrealestate.com



Affinity Real Estate - 600 Park Avenue South - Park Rapids MN 56470

Sale Map pdf Exhibit A



4/27/2026, 9:56:31 AM

Roads
Tax Parcel

1:1,128
0 0.01 0.02 mi
0 0.01 0.02 0.04 km

SEMA County
This information is a compilation of data from different sources with varying degrees of accuracy and requires a qualified field survey to verify.

website: www.AffinityRealEstate.com | email: info@affinityrealestate.com | office: 218-237-3333 | fax:218-237-3377



\$220,000
MLS 7065535 Commercial
701 4th Street
Grand Rapids MN 55744