



MLS 7065828 Lake Home

\$189,900

936 sq ft
2 bedrooms
2 baths

14590 Gazebo Drive
Park Rapids MN 56470

Waterfront: Potato

Status: Active

Description:

Welcome to the 'Love Shack'. This neat, clean and move-in ready condo is located in the North Beach Resort on highly regarded Potato Lake. Carefree living with an atmosphere that makes you feel like you are always on vacation. This nicely updated unit is being sold completely turn-key. It features 2 bedrooms, 2 baths, an entry-side patio, a large lakeside deck and a private boat slip in front of your unit. The association amenities are generous and offer something for everyone. This is an ideal opportunity for those seeking a vacation property or a smaller primary residence. Potato Lake also provides chain access to Eagle and Island lakes, offering over 3,000 acres of boating, fishing and fun! Prime waterfront at an entry level price.

Additional Details:

Year Built	1978
Lot Acres	0.01
Lot Dimensions	18.5x26
School District	309
Taxes	\$1,453
Taxes with Assessments	\$1,698
Tax Year	2026

Additional Features:

Fuel: Electric **Heat:** Baseboard, Heat Pump

Driving Directions:

From Park Rapids: Go north on Hwy 71 to a right on 230th St. Follow to a left on 141st Ave and continue to a right on Gazebo Dr. Proceed to North Beach Resort.



Listed By:
Affinity Real Estate Inc.

Affinity Real Estate Inc. participates in the Regional Multiple Listing Service of Minnesota, Inc Broker Reciprocity (sm) program, allowing us to display other broker's listings on our website. All properties are subject to prior sale, change or withdrawal.



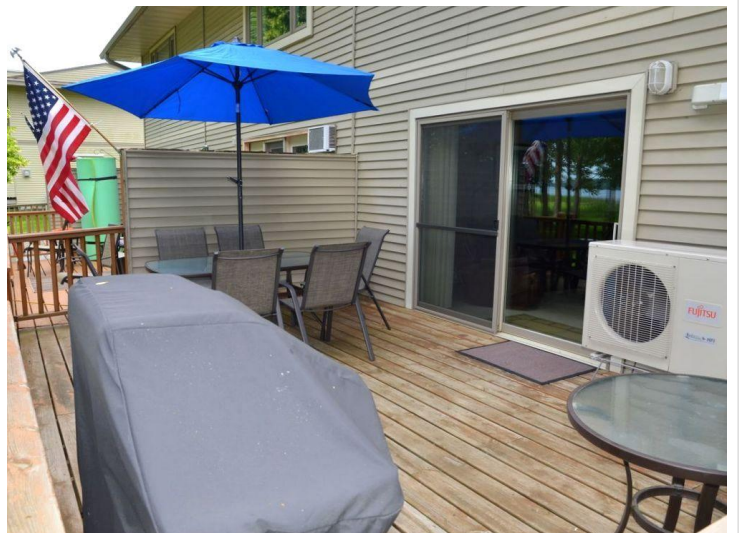
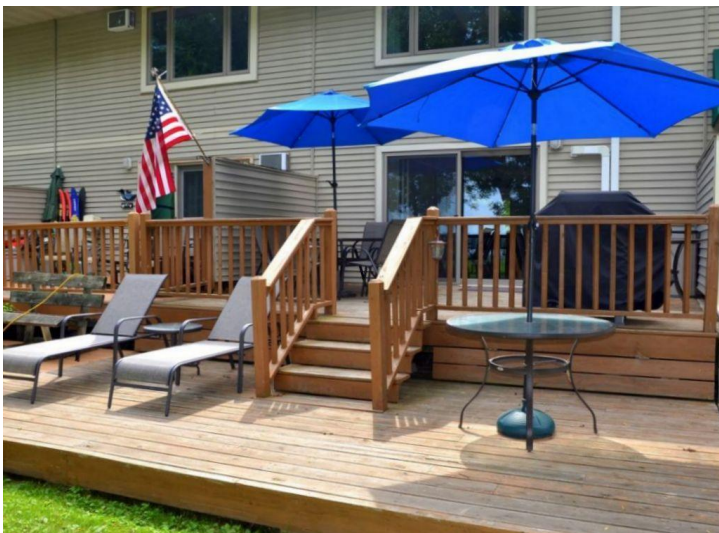
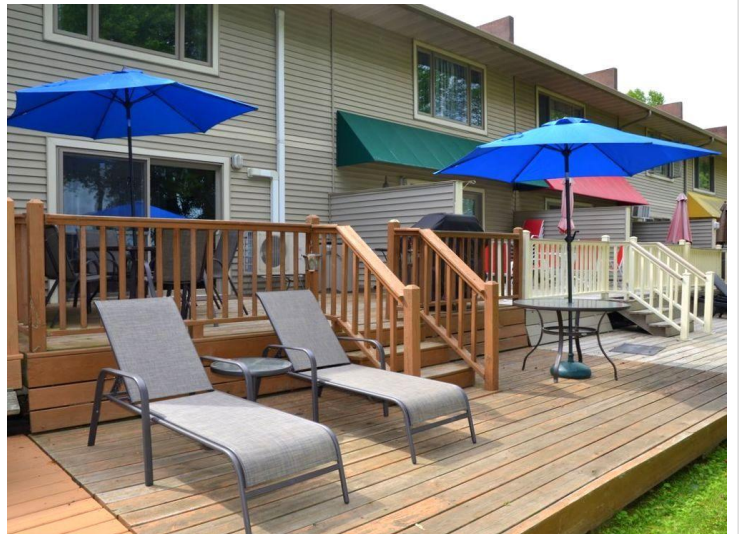
Call Affinity Real Estate

218-237-3333

info@affinityrealestate.com



Affinity Real Estate - 600 Park Avenue South - Park Rapids MN 56470



website: www.AffinityRealEstate.com | email: info@affinityrealestate.com | office: 218-237-3333 | fax:218-237-3377



\$189,900
MLS 7065828 Lake Home
14590 Gazebo Drive
Park Rapids MN 56470



website: www.AffinityRealEstate.com | email: info@affinityrealestate.com | office: 218-237-3333 | fax:218-237-3377

Affinity
REAL ESTATE INC

\$189,900
MLS 7065828 Lake Home
14590 Gazebo Drive
Park Rapids MN 56470



website: www.AffinityRealEstate.com | email: info@affinityrealestate.com | office: 218-237-3333 | fax:218-237-3377



\$189,900
MLS 7065828 Lake Home
14590 Gazebo Drive
Park Rapids MN 56470



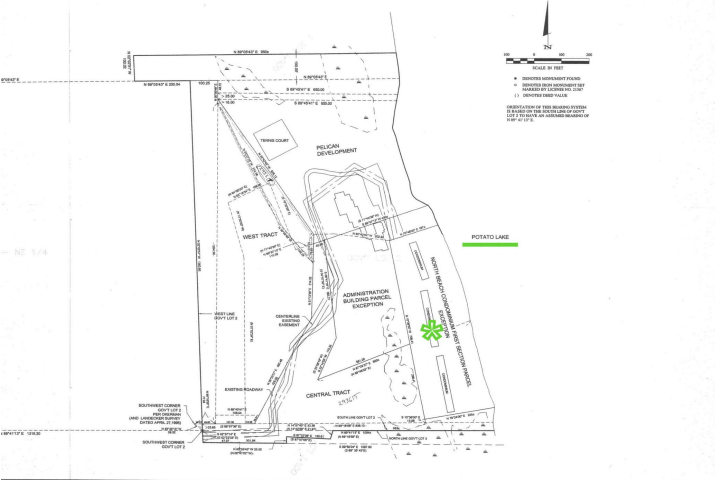
website: www.AffinityRealEstate.com | email: info@affinityrealestate.com | office: 218-237-3333 | fax:218-237-3377

Affinity
REAL ESTATE INC

\$189,900
MLS 7065828 Lake Home
14590 Gazebo Drive
Park Rapids MN 56470



CERTIFICATE OF SURVEY
 PART OF GOVERNMENT LOTS 1, 2 & 3,
 SECTION 26, TOWNSHIP 41 NORTH, RANGE 55 WEST,
 HUBBARD COUNTY, MINNESOTA



website: www.AffinityRealEstate.com | email: info@affinityrealestate.com | office: 218-237-3333 | fax: 218-237-3377



\$189,900
 MLS 7065828 Lake Home
 14590 Gazebo Drive
 Park Rapids MN 56470