



MLS 7065975 Land

\$59,400

4.5 Acres
Raw Land

TBD Zuni
Breezy Point MN 56472

Status: Active

Description:

4.5 Acres in the Thriving Lakes Area!

Discover the perfect blend of privacy and convenience with this 4.5-acre property, ideally located near Breezy Point and all its amenities. a nice drive from Pequot Lakes and the Brainerd/Baxter area, you'll enjoy easy access to shopping, dining, golf, and recreation.

This property features a cleared building site, offering a peaceful, private backyard with plenty of space to spread out and enjoy nature at its finest. Whether you're planning your dream home or a weekend getaway, this is a great opportunity in a growing area.

Additional Details:

Lot Acres	4.5
Lot Dimensions	52x836x309x479x409
School District	186
Taxes	\$408
Taxes with Assessments	\$408
Tax Year	2024

Additional Features:

Driving Directions:

Hwy 371 North to County Rd 11 towards Breezy Point. Take first exit on round about.
Go 2.7 miles to right on Ranchette Dr. to stop sign. Take a right onto Dove St to left on Navaho Trail.
Go 900 more feet to Zuni Circle and property is at end of cul-de-sac.



Listed By:
Edina Realty, Inc.

Affinity Real Estate Inc. participates in the Regional Multiple Listing Service of Minnesota, Inc Broker Reciprocity (sm) program, allowing us to display other broker's listings on our website. All properties are subject to prior sale, change or withdrawal.



Call Affinity Real Estate

218-237-3333

info@affinityrealestate.com



Affinity Real Estate - 600 Park Avenue South - Park Rapids MN 56470



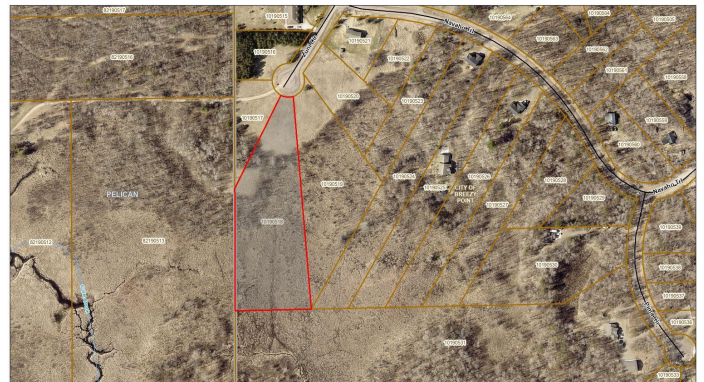
website: www.AffinityRealEstate.com | email: info@affinityrealestate.com | office: 218-237-3333 | fax:218-237-3377



\$59,400
MLS 7065975 Land
TBD Zuni
Breezy Point MN 56472



10190518 0, BREEZY PT., MN, 56472



April 11, 2025

3338442/212026 sid

Township Roads
 City
 Parcel Numbers (labels)
 Parcels

Red: Band_1
 Green: Band_2
 Blue: Band_3

1:2,127

0 0.03 0.06 0.11 mi

0 0.01 0.02 0.04 km

Don't Worry 'Bt' Property Information

website: www.AffinityRealEstate.com | email: info@affinityrealestate.com | office: 218-237-3333 | fax:218-237-3377



\$59,400
MLS 7065975 Land
TBD Zuni
Breezy Point MN 56472



website: www.AffinityRealEstate.com | email: info@affinityrealestate.com | office: 218-237-3333 | fax:218-237-3377



\$59,400
MLS 7065975 Land
TBD Zuni
Breezy Point MN 56472