



MLS 7065982 Residential

\$255,000

1,088 sq ft
2 bedrooms
2 baths

1615 30th Street
Bemidji MN 56601

Status: Active

Description:

This conveniently located two-bedroom townhome in North Ridge Cottages CIC offers easy access to shopping, dining, and care facilities. The open-concept design seamlessly connects the kitchen, dining, and living areas, creating a welcoming and spacious environment. The kitchen features a central island, perfect for meal preparation and entertaining, and adjacent to the dining area, there is a patio providing an outdoor space for relaxation. Other amenities include a stackable washer and dryer for efficient laundry management, a single attached garage for secure parking, a concrete driveway enhancing durability and curb appeal, and a community shared unit featuring an exercise room, a kitchenette, and a bathroom for residents' convenience.

Additional Details:

Year Built	2016
Lot Acres	0.032
Garage Stalls	1
School District	31
Taxes	\$3,192
Taxes with Assessments	\$3,192
Tax Year	2026

Additional Features:

Basement: None **Fuel:** Electric **Garage:** 1 **Heat:** Baseboard **Sewer:** City Sewer/Connected **Water:** City Water/Connected **Air Conditioning:** Ductless Mini-Split

Driving Directions:

From Irvine Ave, west on 30th St to right at 1615 30th St. Follow to #24 on the left.



Listed By:
Realty Experts, LLC

Affinity Real Estate Inc. participates in the Regional Multiple Listing Service of Minnesota, Inc Broker Reciprocity (sm) program, allowing us to display other broker's listings on our website. All properties are subject to prior sale, change or withdrawal.



Call Affinity Real Estate

218-237-3333

info@affinityrealestate.com



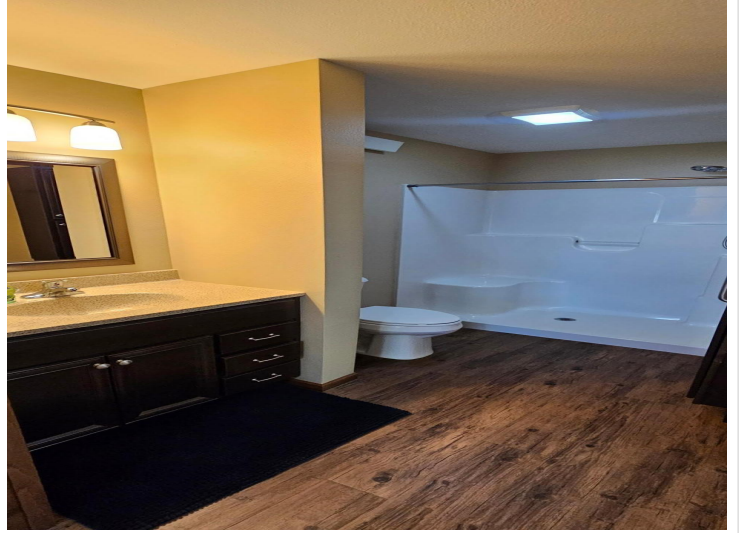
Affinity Real Estate - 600 Park Avenue South - Park Rapids MN 56470



website: www.AffinityRealEstate.com | email: info@affinityrealestate.com | office: 218-237-3333 | fax: 218-237-3377

Affinity
REAL ESTATE INC

\$255,000
MLS 7065982 Residential
1615 30th Street
Bemidji MN 56601



website: www.AffinityRealEstate.com | email: info@affinityrealestate.com | office: 218-237-3333 | fax:218-237-3377

Affinity
REAL ESTATE INC

\$255,000
MLS 7065982 Residential
1615 30th Street
Bemidji MN 56601



website: www.AffinityRealEstate.com | email: info@affinityrealestate.com | office: 218-237-3333 | fax:218-237-3377



\$255,000
MLS 7065982 Residential
1615 30th Street
Bemidji MN 56601