



MLS 7066182 Lake Home

\$349,900

2,652 sq ft
3 bedrooms
3 baths

34526 Hillcrest Road
Motley MN 56466

Waterfront: Unnamed Lake

Status: Active

Description:

Welcome to easy, maintenance-free living in the highly sought-after Pine Ridge Estates—just outside of Motley and set right on Pine Ridge Golf Course, with beautiful pond views along holes 16 and 17. And when you're ready to hit the water, Lake Shamineau is just a quick five-minute drive away. This thoughtfully designed twin home welcomes you with a warm, open-concept layout that instantly feels like home. Enjoy over 2,600+ finished square feet with 3 bedrooms and 3 bathrooms. The main floor offers main floor living with a spacious primary suite and private en-suite bath, plus an additional bedroom perfect for guests or a home office. You'll love the sunroom filled with natural light and the cozy gas fireplace—perfect for relaxing year-round. The lower level expands your living space with a generous family room ideal for entertaining, an additional bedroom, and plenty of storage for hobbies, seasonal items, and more. If you've been searching for a home that blends low-maintenance living with scenic golf course views, modern comfort, and quick access to one of the area's most popular lakes, this is your opportunity. Schedule your showing today and come experience everything this home has to offer.

Additional Details:


Year Built	2006
Lot Acres	0.076
Lot Dimensions	See GIS
Garage Stalls	2
School District	2170
Taxes	\$2,838
Taxes with Assessments	\$2,838
Tax Year	2026

Additional Features:

Basement: Egress Window(s), Finished, Walkout **Fuel:** Electric, Propane **Garage:** 2 **Heat:** Baseboard, Forced Air, Fireplace(s), In-Floor Heating **Sewer:** Septic System Compliant - Yes, Shared Septic, Tank with Drainage Field **Water:** Shared System, Well **Air Conditioning:** Central Air

Driving Directions:

From Motley, Take Highway 10 South, Left on Hillcrest Road, Drive past Pine Ridge Golf Course, Property on Right at 34526.



Listed By:
Edina Realty, Inc.

Affinity Real Estate Inc. participates in the Regional Multiple Listing Service of Minnesota, Inc Broker Reciprocity (sm) program, allowing us to display other broker's listings on our website. All properties are subject to prior sale, change or withdrawal.



Call Affinity Real Estate
218-237-3333
info@affinityrealestate.com



Affinity Real Estate - 600 Park Avenue South - Park Rapids MN 56470



website: www.AffinityRealEstate.com | email: info@affinityrealestate.com | office: 218-237-3333 | fax: 218-237-3377

Affinity
REAL ESTATE INC

\$349,900
MLS 7066182 Lake Home
34526 Hillcrest Road
Motley MN 56466



website: www.AffinityRealEstate.com | email: info@affinityrealestate.com | office: 218-237-3333 | fax:218-237-3377



\$349,900
MLS 7066182 Lake Home
34526 Hillcrest Road
Motley MN 56466



website: www.AffinityRealEstate.com | email: info@affinityrealestate.com | office: 218-237-3333 | fax: 218-237-3377

Affinity
REAL ESTATE INC

\$349,900
MLS 7066182 Lake Home
34526 Hillcrest Road
Motley MN 56466



website: www.AffinityRealEstate.com | email: info@affinityrealestate.com | office: 218-237-3333 | fax:218-237-3377

Affinity
REAL ESTATE INC

\$349,900
MLS 7066182 Lake Home
34526 Hillcrest Road
Motley MN 56466



website: www.AffinityRealEstate.com | email: info@affinityrealestate.com | office: 218-237-3333 | fax:218-237-3377

Affinity
REAL ESTATE INC

\$349,900
MLS 7066182 Lake Home
34526 Hillcrest Road
Motley MN 56466



website: www.AffinityRealEstate.com | email: info@affinityrealestate.com | office: 218-237-3333 | fax:218-237-3377



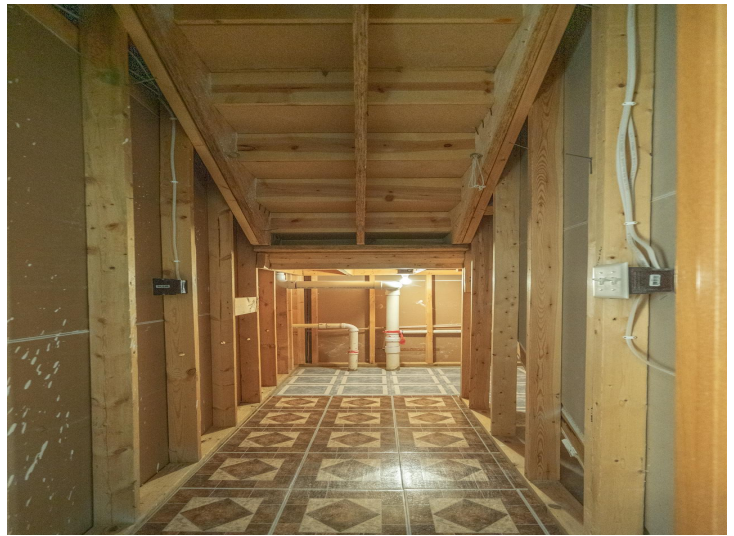
\$349,900
MLS 7066182 Lake Home
34526 Hillcrest Road
Motley MN 56466



website: www.AffinityRealEstate.com | email: info@affinityrealestate.com | office: 218-237-3333 | fax:218-237-3377

Affinity
REAL ESTATE INC

\$349,900
MLS 7066182 Lake Home
34526 Hillcrest Road
Motley MN 56466



FLOOR 2

GRASS INTERNAL AREA
 FLOOR 2: 482 sq. ft. (includes 11, 13B-14, 15)
 TOTAL: 2,577 sq. ft. BALCONY: 156 sq. ft.
 EXCLUDED AREAS: GARAGE, OFF. H.S., BALCONY
 SIZES AND DIMENSIONS ARE APPROXIMATE. ACTUAL MAY VARY.



website: www.AffinityRealEstate.com | email: info@affinityrealestate.com | office: 218-237-3333 | fax: 218-237-3377

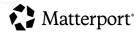


\$349,900
 MLS 7066182 Lake Home
 34526 Hillcrest Road
 Motley MN 56466



FLOOR 1

GROSS INTERNAL AREA
FLOOR 1: 1,482 SQ. FT. FLOOR 2: 1,156 SQ. FT.
TOTAL: 2,638 SQ. FT.
EXCLUDED AREAS: GARAGE 400 SQ. FT. BALCONY 150 SQ. FT.
MEASUREMENTS AND DIMENSIONS ARE APPROXIMATE. ACTUAL MAY VARY.



website: www.AffinityRealEstate.com | email: info@affinityrealestate.com | office: 218-237-3333 | fax: 218-237-3377



\$349,900
MLS 7066182 Lake Home
34526 Hillcrest Road
Motley MN 56466