



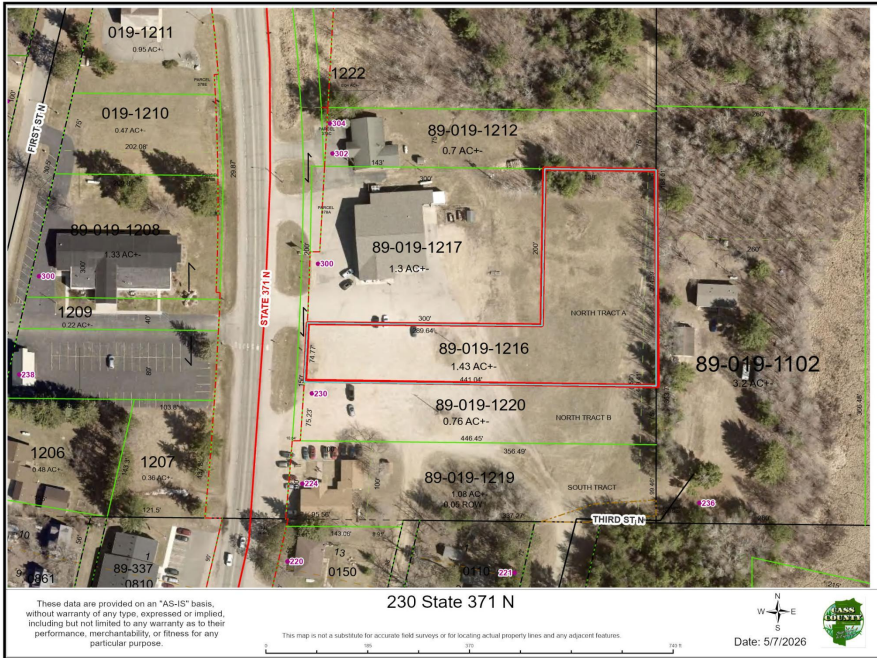
MLS 7066363 Land

\$130,000

1.43 Acres
Raw Land

230 State 371
Hackensack MN 56452

Status: Active



Description:

Prime 1.43-acre commercial lot in the heart of Hackensack. Located along State 371 with road construction now complete, this level parcel offers excellent visibility and easy access. Features include city sidewalk frontage, power installed, and hookup available for city water and sewer. The property measures 74' at the sidewalk and widens to 274' across the back, providing ample space for a variety of uses. The frontage has been rented by a food truck for several years. This versatile opportunity in a high-exposure setting has a history of steady traffic and strong location appeal.

Additional Details:

Lot Acres	1.43
Lot Dimensions	74x441 xirreg
School District	113
Taxes	\$466
Taxes with Assessments	\$490
Tax Year	2026

Additional Features:

Driving Directions:

In Hackensack between Mark's Market and the Lighthouse Church.



Listed By:
Edina Realty, Inc.

Affinity Real Estate Inc. participates in the Regional Multiple Listing Service of Minnesota, Inc Broker Reciprocity (sm) program, allowing us to display other broker's listings on our website. All properties are subject to prior sale, change or withdrawal.



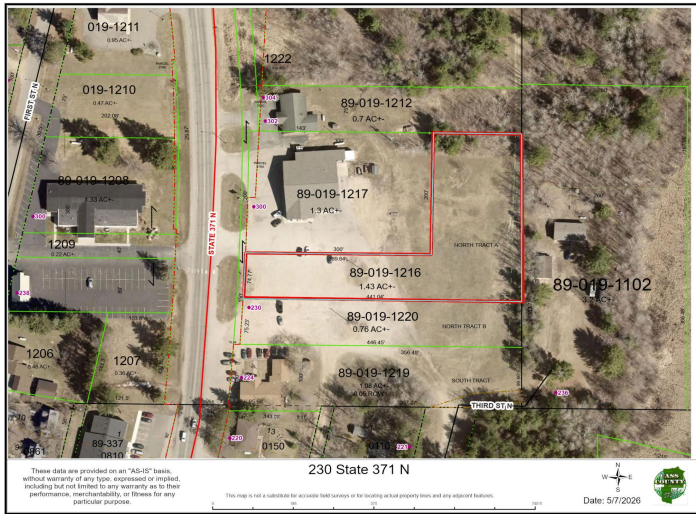
Call Affinity Real Estate

218-237-3333

info@affinityrealestate.com



Affinity Real Estate - 600 Park Avenue South - Park Rapids MN 56470



website: www.AffinityRealEstate.com | email: info@affinityrealestate.com | office: 218-237-3333 | fax: 218-237-3377



\$130,000
 MLS 7066363 Land
 230 State 371
 Hackensack MN 56452



website: www.AffinityRealEstate.com | email: info@affinityrealestate.com | office: 218-237-3333 | fax:218-237-3377



\$130,000
MLS 7066363 Land
230 State 371
Hackensack MN 56452



website: www.AffinityRealEstate.com | email: info@affinityrealestate.com | office: 218-237-3333 | fax:218-237-3377



\$130,000
MLS 7066363 Land
230 State 371
Hackensack MN 56452