



MLS 7066472 Residential

\$268,000

1,324 sq ft
2 bedrooms
1 baths

2501 Woodridge Lane
Brainerd MN 56401

Status: Active

Description:

Step into comfort and convenience with this move-in ready one-level home, set in a meticulously maintained association where snow removal and lawn care are taken care of for you. Recent updates include new vinyl flooring throughout, fresh paint, and a brand-new furnace (2023). The light-filled four-season porch is perfect for morning coffee or evening relaxation, while the private, fenced patio offers an ideal outdoor retreat. Enjoy the added benefit of extra space between you and your neighbor for more privacy. With its easy layout, low-maintenance lifestyle, and welcoming community, this property is a rare find—don't miss your chance to make it yours!

Additional Details:

Year Built	1999
Lot Acres	0.06
Lot Dimensions	40x70
Garage Stalls	2
School District	181
Taxes	\$2,371
Taxes with Assessments	\$2,371
Tax Year	2025

Additional Features:

Basement: None **Fuel:** Natural Gas **Garage:** 2 **Heat:** Forced Air **Sewer:** City Sewer/Connected **Water:** City Water/Connected **Air Conditioning:** Central Air

Driving Directions:

Business 371 South to right on Buffalo Hills Road to Southview Court to Woodridge Lane.



Listed By:
Central MN Realty LLC

Affinity Real Estate Inc. participates in the Regional Multiple Listing Service of Minnesota, Inc Broker Reciprocity (sm) program, allowing us to display other broker's listings on our website. All properties are subject to prior sale, change or withdrawal.



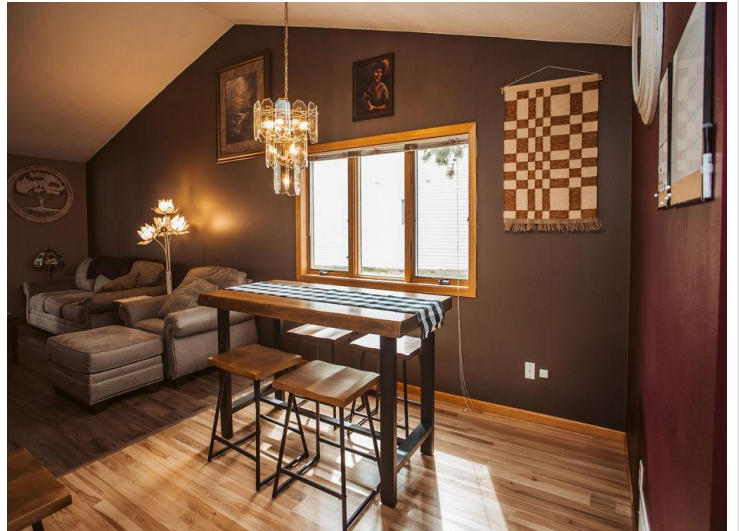
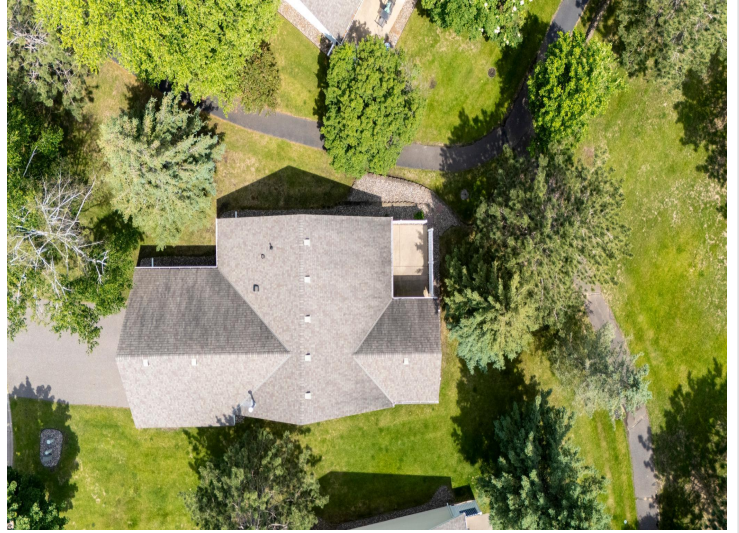
Call Affinity Real Estate

218-237-3333

info@affinityrealestate.com



Affinity Real Estate - 600 Park Avenue South - Park Rapids MN 56470



website: www.AffinityRealEstate.com | email: info@affinityrealestate.com | office: 218-237-3333 | fax: 218-237-3377

Affinity
REAL ESTATE INC

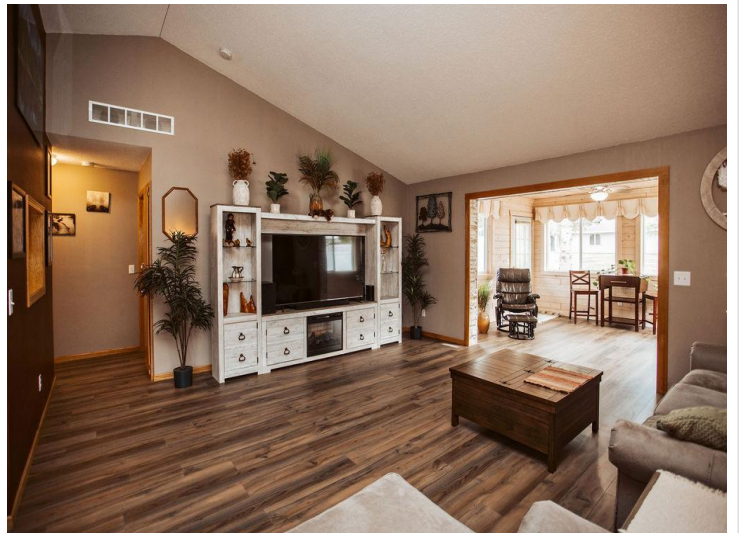
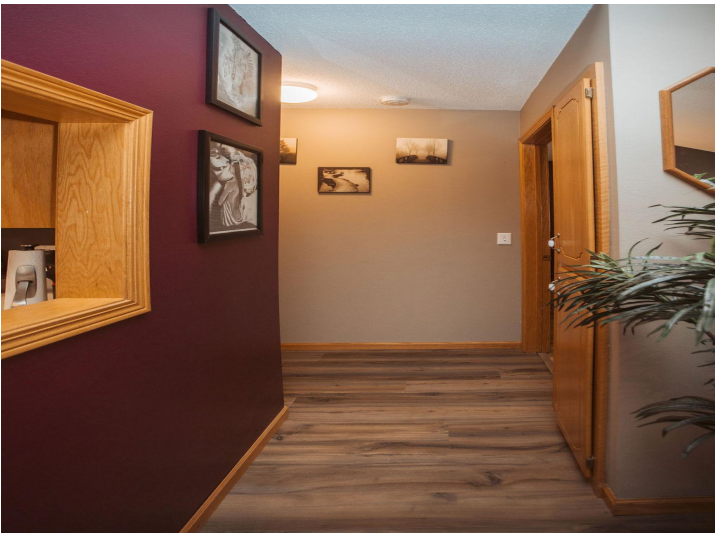
\$268,000
MLS 7066472 Residential
2501 Woodridge Lane
Brainerd MN 56401



website: www.AffinityRealEstate.com | email: info@affinityrealestate.com | office: 218-237-3333 | fax: 218-237-3377

Affinity
REAL ESTATE INC

\$268,000
MLS 7066472 Residential
2501 Woodridge Lane
Brainerd MN 56401



website: www.AffinityRealEstate.com | email: info@affinityrealestate.com | office: 218-237-3333 | fax:218-237-3377

Affinity
REAL ESTATE INC

\$268,000
MLS 7066472 Residential
2501 Woodridge Lane
Brainerd MN 56401



website: www.AffinityRealEstate.com | email: info@affinityrealestate.com | office: 218-237-3333 | fax:218-237-3377

Affinity
REAL ESTATE INC

\$268,000
MLS 7066472 Residential
2501 Woodridge Lane
Brainerd MN 56401



website: www.AffinityRealEstate.com | email: info@affinityrealestate.com | office: 218-237-3333 | fax:218-237-3377



\$268,000
MLS 7066472 Residential
2501 Woodridge Lane
Brainerd MN 56401