



MLS 7066876 Residential

**\$649,900**

2,944 sq ft  
5 bedrooms  
4 baths

1608 Lake Jessie Road  
Alexandria MN 56308

Status: Coming Soon

**Description:**

Set on 1.7 acres just a couple minutes from Alexandria, this place has that just-right mix of old soul and modern comfort. Originally built back in 1918 and given a major facelift and addition in 2004, it's the kind of home that's been cared for and thoughtfully brought along over the years.

Inside, you'll find an easy, open layout that just feels good to live in. The kitchen is the heart of it all, with custom maple cabinets, quartz countertops, and stainless appliances—plenty of room to cook, gather, and chat. The dining area opens right out to an aggregate patio, making it simple to step outside for grilling, relaxing, or watching the sunset roll across your own stretch of land with mature trees, well-established landscaping, and lawn.

With five bedrooms and four baths, there's room for everyone. The one bedroom on the main floor works great as a home office or guest space. Upstairs, the owner's suite is tucked away with its own staircase off the kitchen—your own private retreat—with in-floor heat to keep things cozy. Three more bedrooms are reached by a second staircase off the living room, giving the home a little character and a lot of function.

The living room centers around a gas fireplace—perfect for those chilly evenings—and the main-floor laundry comes with plenty of storage to keep things running smooth. There's also added flexibility here, as the pantry area in the laundry room could be converted back into a main-floor bathroom since it's still stubbed in. You'll also appreciate in-floor heat in the newer basement area and attached garage, adding comfort where it counts.

The lower level offers even more potential, with space ready to be finished into additional living area and already stubbed in for a future bathroom—making it easy to expand as your needs grow.

The attached garage is fully finished with heat, drains, and cabinetry, while the detached garage gives you extra space for toys, tools, or hobbies. Outside, there's freshly seal coated dual driveways and a brand-new septic system will be installed before closing, so you can move in with confidence. The current septic is fully functioning and has had no issues, but the inspection showed it was no longer up to code.

Out here, you get that wide-open country feel—room to roam, trees for shade, and space to breathe—but you're not cut off from the world. With fiber optic internet available, it's easy to work from home, keep up with school work, or stay connected. Getting back to town is simple too, with the route to Alexandria that's only about 1/8 mile from the driveway.



Listed By  
Kyle Real Estate



Call Affinity Real Estate  
**218-237-3333**

[info@affinityrealestate.com](mailto:info@affinityrealestate.com)

Affinity Real Estate Inc. participates in the Regional Multiple Listing Service of Minnesota, Inc. Broker Reciprocity (sm) program, allowing us to display other broker's listings on our website. All properties are subject to prior sale, change or withdrawal.

**Additional Details:**

Year Built	2003
Lot Acres	1.7
Lot Dimensions	274 x 222

MLS REALTOR REALTY Affinity Real Estate - 600 Park Avenue South - Park Rapids MN 56470



website: [www.AffinityRealEstate.com](http://www.AffinityRealEstate.com) | email: [info@affinityrealestate.com](mailto:info@affinityrealestate.com) | office: 218-237-3333 | fax:218-237-3377



**\$649,900**  
MLS 7066876 Residential  
1608 Lake Jessie Road  
Alexandria MN 56308



website: [www.AffinityRealEstate.com](http://www.AffinityRealEstate.com) | email: [info@affinityrealestate.com](mailto:info@affinityrealestate.com) | office: 218-237-3333 | fax:218-237-3377



**\$649,900**  
MLS 7066876 Residential  
1608 Lake Jessie Road  
Alexandria MN 56308



website: [www.AffinityRealEstate.com](http://www.AffinityRealEstate.com) | email: [info@affinityrealestate.com](mailto:info@affinityrealestate.com) | office: 218-237-3333 | fax:218-237-3377

**Affinity**  
REAL ESTATE INC

**\$649,900**  
MLS 7066876 Residential  
1608 Lake Jessie Road  
Alexandria MN 56308



website: [www.AffinityRealEstate.com](http://www.AffinityRealEstate.com) | email: [info@affinityrealestate.com](mailto:info@affinityrealestate.com) | office: 218-237-3333 | fax: 218-237-3377

**Affinity**  
REAL ESTATE INC

**\$649,900**  
MLS 7066876 Residential  
1608 Lake Jessie Road  
Alexandria MN 56308



website: [www.AffinityRealEstate.com](http://www.AffinityRealEstate.com) | email: [info@affinityrealestate.com](mailto:info@affinityrealestate.com) | office: 218-237-3333 | fax: 218-237-3377

**Affinity**  
REAL ESTATE INC

**\$649,900**  
MLS 7066876 Residential  
1608 Lake Jessie Road  
Alexandria MN 56308



website: [www.AffinityRealEstate.com](http://www.AffinityRealEstate.com) | email: [info@affinityrealestate.com](mailto:info@affinityrealestate.com) | office: 218-237-3333 | fax: 218-237-3377

**Affinity**  
REAL ESTATE INC

**\$649,900**  
MLS 7066876 Residential  
1608 Lake Jessie Road  
Alexandria MN 56308



website: [www.AffinityRealEstate.com](http://www.AffinityRealEstate.com) | email: [info@affinityrealestate.com](mailto:info@affinityrealestate.com) | office: 218-237-3333 | fax:218-237-3377

**Affinity**  
REAL ESTATE INC

**\$649,900**  
MLS 7066876 Residential  
1608 Lake Jessie Road  
Alexandria MN 56308



website: [www.AffinityRealEstate.com](http://www.AffinityRealEstate.com) | email: [info@affinityrealestate.com](mailto:info@affinityrealestate.com) | office: 218-237-3333 | fax:218-237-3377

**Affinity**  
REAL ESTATE INC

**\$649,900**  
MLS 7066876 Residential  
1608 Lake Jessie Road  
Alexandria MN 56308



website: [www.AffinityRealEstate.com](http://www.AffinityRealEstate.com) | email: [info@affinityrealestate.com](mailto:info@affinityrealestate.com) | office: 218-237-3333 | fax:218-237-3377



**\$649,900**  
MLS 7066876 Residential  
1608 Lake Jessie Road  
Alexandria MN 56308



website: [www.AffinityRealEstate.com](http://www.AffinityRealEstate.com) | email: [info@affinityrealestate.com](mailto:info@affinityrealestate.com) | office: 218-237-3333 | fax:218-237-3377

**Affinity**  
REAL ESTATE INC

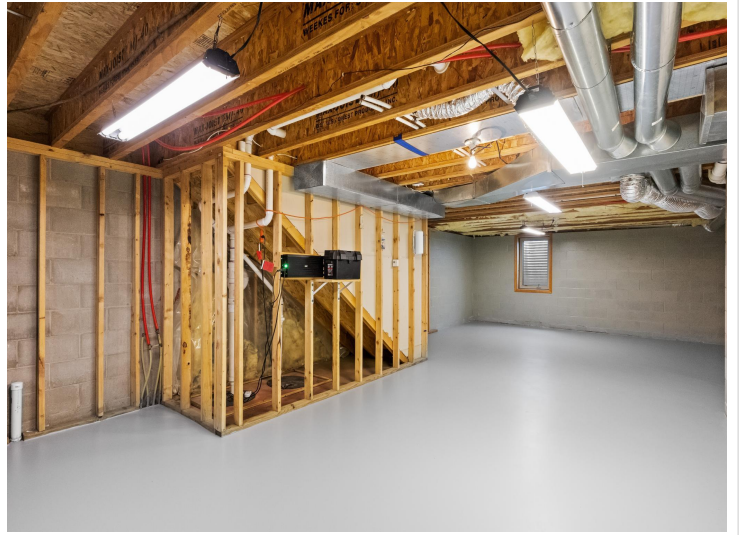
**\$649,900**  
MLS 7066876 Residential  
1608 Lake Jessie Road  
Alexandria MN 56308



website: [www.AffinityRealEstate.com](http://www.AffinityRealEstate.com) | email: [info@affinityrealestate.com](mailto:info@affinityrealestate.com) | office: 218-237-3333 | fax: 218-237-3377

**Affinity**  
REAL ESTATE INC

**\$649,900**  
MLS 7066876 Residential  
1608 Lake Jessie Road  
Alexandria MN 56308



website: [www.AffinityRealEstate.com](http://www.AffinityRealEstate.com) | email: [info@affinityrealestate.com](mailto:info@affinityrealestate.com) | office: 218-237-3333 | fax:218-237-3377



**\$649,900**  
MLS 7066876 Residential  
1608 Lake Jessie Road  
Alexandria MN 56308



website: [www.AffinityRealEstate.com](http://www.AffinityRealEstate.com) | email: [info@affinityrealestate.com](mailto:info@affinityrealestate.com) | office: 218-237-3333 | fax:218-237-3377



**\$649,900**  
MLS 7066876 Residential  
1608 Lake Jessie Road  
Alexandria MN 56308