



MLS 7066904 Lake Home

\$624,900

2,733 sq ft
4 bedrooms
3 baths

4132 Omaha Lane
Alexandria MN 56308

Waterfront: Ida

Status: Coming Soon

Description:

Nestled on one of the area's most desirable lakes, this beautiful lake home offers the perfect blend of privacy, comfort, and lakeside living. Located in a 9-home association, you'll enjoy access to a sandy beach, your boat slip and a wonderful gathering space by the water, perfect for relaxing, swimming, and making memories with family and friends. Inside, the home features 4 spacious bedrooms plus a lower-level nook that could easily be converted into a 5th bedroom. The main living area has vaulted wood ceilings and oversized windows that fill the space with natural sunlight, creating a warm and inviting atmosphere. The sunroom is a perfect spot to enjoy the outdoor beauty with your morning coffee. Lake Ida is located just a few minutes from Alexandria and 2 hours from the Twin Cities.

Additional Details:

Year Built	2005
Lot Acres	0.13
Lot Dimensions	38 x 28
Garage Stalls	2
School District	206
Taxes	\$4,182
Taxes with Assessments	\$4,182
Tax Year	2026

Additional Features:

Basement: Daylight/Lookout Windows, Egress Window(s), Finished, Full, In-Floor Heat, Walkout **Fuel:** Propane **Garage:** 2 **Heat:** Forced Air, Fireplace(s), In-Floor Heating **Sewer:** City Sewer/Connected **Water:** Private, Shared System **Air Conditioning:** Central Air

Driving Directions:

From Alexandria take 3rd Ave W to Co Rd 22, turn right on Co Rd 61, turn left on Lake Ida Way NE, turn right on Omaha Lane, to home on the right.



Listed By:
Realty ONE Group Choice

Affinity Real Estate Inc. participates in the Regional Multiple Listing Service of Minnesota, Inc Broker Reciprocity (sm) program, allowing us to display other broker's listings on our website. All properties are subject to prior sale, change or withdrawal.



Call Affinity Real Estate

218-237-3333

info@affinityrealestate.com



Affinity Real Estate - 600 Park Avenue South - Park Rapids MN 56470



website: www.AffinityRealEstate.com | email: info@affinityrealestate.com | office: 218-237-3333 | fax: 218-237-3377

Affinity
REAL ESTATE INC

\$624,900
MLS 7066904 Lake Home
4132 Omaha Lane
Alexandria MN 56308



website: www.AffinityRealEstate.com | email: info@affinityrealestate.com | office: 218-237-3333 | fax: 218-237-3377

Affinity
REAL ESTATE INC

\$624,900
MLS 7066904 Lake Home
4132 Omaha Lane
Alexandria MN 56308



website: www.AffinityRealEstate.com | email: info@affinityrealestate.com | office: 218-237-3333 | fax:218-237-3377

Affinity
REAL ESTATE INC

\$624,900
MLS 7066904 Lake Home
4132 Omaha Lane
Alexandria MN 56308



website: www.AffinityRealEstate.com | email: info@affinityrealestate.com | office: 218-237-3333 | fax:218-237-3377

Affinity
REAL ESTATE INC

\$624,900
MLS 7066904 Lake Home
4132 Omaha Lane
Alexandria MN 56308



website: www.AffinityRealEstate.com | email: info@affinityrealestate.com | office: 218-237-3333 | fax:218-237-3377



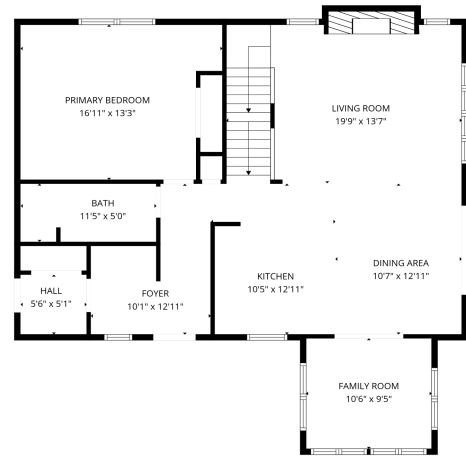
\$624,900
MLS 7066904 Lake Home
4132 Omaha Lane
Alexandria MN 56308



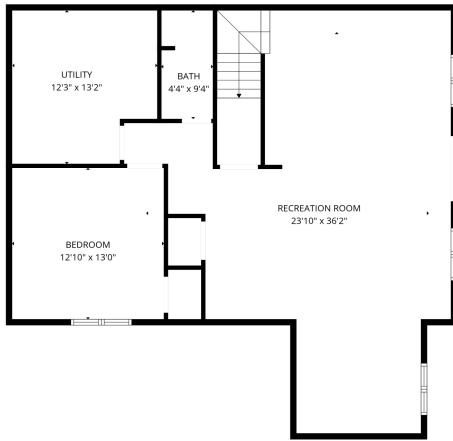
website: www.AffinityRealEstate.com | email: info@affinityrealestate.com | office: 218-237-3333 | fax:218-237-3377

Affinity
REAL ESTATE INC

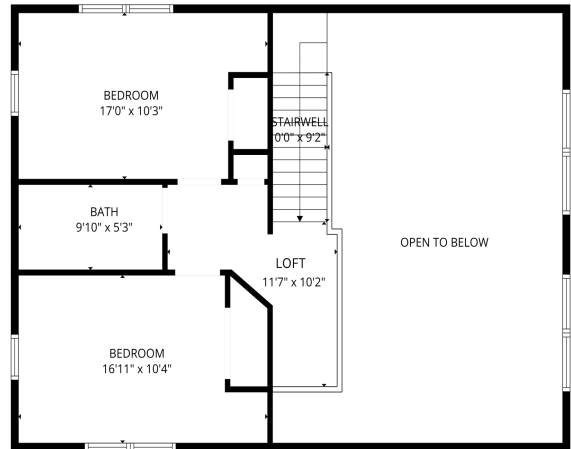
\$624,900
MLS 7066904 Lake Home
4132 Omaha Lane
Alexandria MN 56308



FLOOR PLAN CREATED BY CURICASA APP. MEASUREMENTS DEEMED HIGHLY RELIABLE BUT NOT GUARANTEED.



FLOOR PLAN CREATED BY CURICASA APP. MEASUREMENTS DEEMED HIGHLY RELIABLE BUT NOT GUARANTEED.



FLOOR PLAN CREATED BY CURICASA APP. MEASUREMENTS DEEMED HIGHLY RELIABLE BUT NOT GUARANTEED.

website: www.AffinityRealEstate.com | email: info@affinityrealestate.com | office: 218-237-3333 | fax: 218-237-3377



\$624,900
 MLS 7066904 Lake Home
 4132 Omaha Lane
 Alexandria MN 56308