



MLS 7066953 Residential

\$525,000

2,842 sq ft
3 bedrooms
3 baths

14237 30th Avenue
Glyndon MN 56547

Status: Active

Description:

Purchase includes 2 lots, one with the house and one with the 36x46 shop, total of 3.38 acres. Room to roam and space to work—this one checks all the boxes! Welcome to this beautifully updated two-story home set on 3.3 acres just minutes from town. Offering 3 bedrooms on one level and 3 bathrooms, this property combines comfort, functionality, and the kind of privacy buyers are searching for. Step inside to find a warm and inviting layout with numerous updates throughout. The stunning sunroom is a standout feature—perfect for morning coffee, relaxing evenings, or soaking in peaceful country views year-round. Outside is where this property truly shines. Enjoy your own outdoor oasis with a hot tub set on a beautiful paver patio—perfect for entertaining or unwinding under the stars. The large shop is fully finished, heated, has floor drain and insulated with durable concrete floors—ideal for hobbies, storage, or running a business right from home. You'll also find an additional shed and a chicken coop, large garden, additional shed for gardening or extra storage. Enjoy the best of both worlds with acreage living and the convenience of being close to town. Whether you're looking for space to spread out, a place to work, or simply a quiet retreat, this property delivers. Don't miss your chance to own this versatile and well-cared-for acreage!

Additional Details:

Year Built	1979
Lot Acres	3.38
Lot Dimensions	400x780
Garage Stalls	2
School District	2164
Taxes	\$2,257
Taxes with Assessments	\$2,268
Tax Year	2025

Additional Features:

Basement: Full **Fuel:** Propane **Garage:** 2 **Heat:** Forced Air **Sewer:** Septic System Compliant - Yes **Water:** Shared System **Air Conditioning:** Central Air

Driving Directions:

Highway 10 East to Highway 9, South to 30th ave, turn left, next right



Listed By:
Berkshire Hathaway HomeServices Premier
Property

Affinity Real Estate Inc. participates in the Regional Multiple Listing Service of Minnesota, Inc Broker Reciprocity (sm) program, allowing us to display other broker's listings on our website. All properties are subject to prior sale, change or withdrawal.



Call Affinity Real Estate
218-237-3333
info@affinityrealestate.com



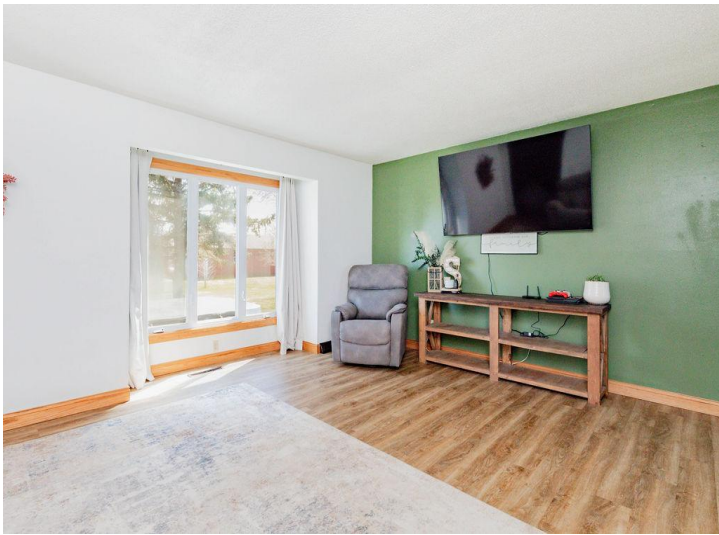
Affinity Real Estate - 600 Park Avenue South - Park Rapids MN 56470



website: www.AffinityRealEstate.com | email: info@affinityrealestate.com | office: 218-237-3333 | fax: 218-237-3377

Affinity
REAL ESTATE INC

\$525,000
MLS 7066953 Residential
14237 30th Avenue
Glyndon MN 56547



website: www.AffinityRealEstate.com | email: info@affinityrealestate.com | office: 218-237-3333 | fax:218-237-3377

Affinity
REAL ESTATE INC

\$525,000
MLS 7066953 Residential
14237 30th Avenue
Glyndon MN 56547



website: www.AffinityRealEstate.com | email: info@affinityrealestate.com | office: 218-237-3333 | fax:218-237-3377

Affinity
REAL ESTATE INC

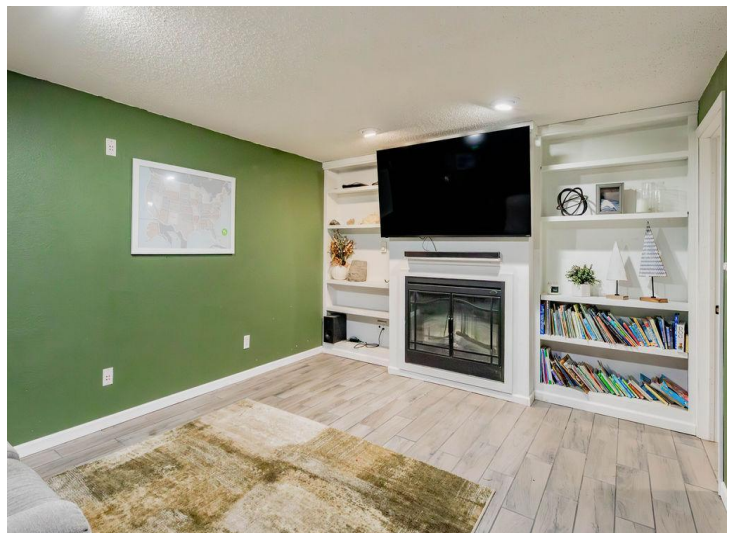
\$525,000
MLS 7066953 Residential
14237 30th Avenue
Glyndon MN 56547



website: www.AffinityRealEstate.com | email: info@affinityrealestate.com | office: 218-237-3333 | fax: 218-237-3377

Affinity
REAL ESTATE INC

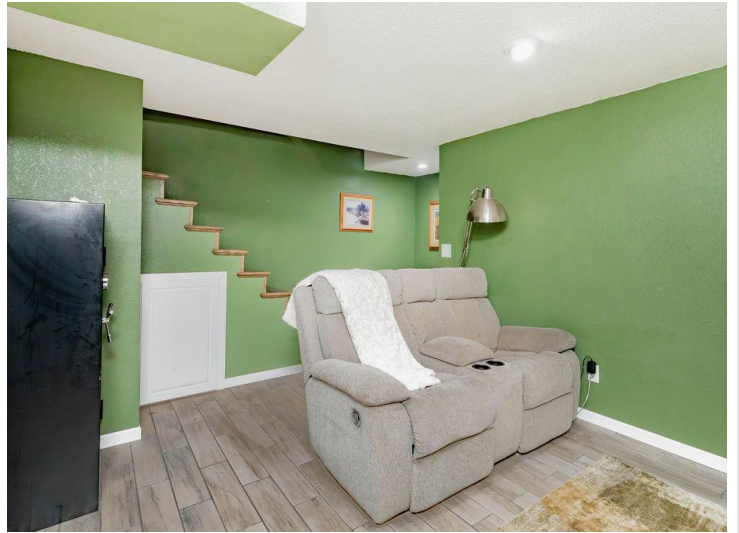
\$525,000
MLS 7066953 Residential
14237 30th Avenue
Glyndon MN 56547



website: www.AffinityRealEstate.com | email: info@affinityrealestate.com | office: 218-237-3333 | fax:218-237-3377

Affinity
REAL ESTATE INC

\$525,000
MLS 7066953 Residential
14237 30th Avenue
Glyndon MN 56547



website: www.AffinityRealEstate.com | email: info@affinityrealestate.com | office: 218-237-3333 | fax: 218-237-3377

Affinity
REAL ESTATE INC

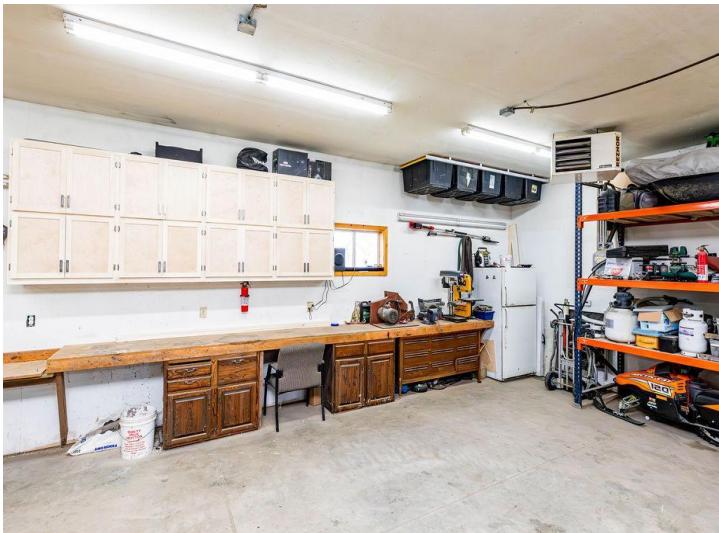
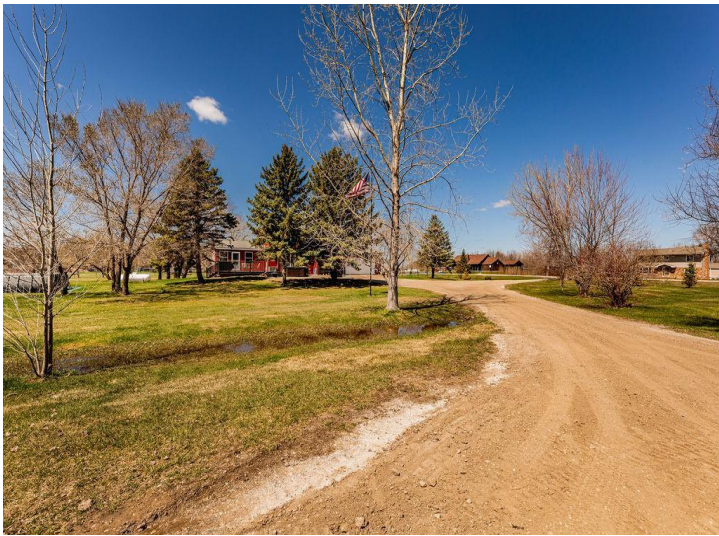
\$525,000
MLS 7066953 Residential
14237 30th Avenue
Glyndon MN 56547



website: www.AffinityRealEstate.com | email: info@affinityrealestate.com | office: 218-237-3333 | fax:218-237-3377



\$525,000
MLS 7066953 Residential
14237 30th Avenue
Glyndon MN 56547



website: www.AffinityRealEstate.com | email: info@affinityrealestate.com | office: 218-237-3333 | fax:218-237-3377



\$525,000
MLS 7066953 Residential
14237 30th Avenue
Glyndon MN 56547



website: www.AffinityRealEstate.com | email: info@affinityrealestate.com | office: 218-237-3333 | fax:218-237-3377



\$525,000
MLS 7066953 Residential
14237 30th Avenue
Glyndon MN 56547