



MLS 7067146 Lake Home

\$769,900

2,312 sq ft
4 bedrooms
3 baths

24425 Gray Goose Drive
Park Rapids MN 56470

Waterfront: Potato

Status: Active

Description:

This stunning home features 4-bedrooms, 3-bathrooms, with impressive vaulted ceilings and beautiful hardwood floors. The upper level includes 3-bedrooms and two full bathrooms, providing ample space for family and guests. For all your storage needs, the property offers an oversized heated attached garage, a detached heated shop measuring 32x40 feet, and an additional storage building that is 32x48 feet. Set on 11.8 acres, the property boasts a large backyard deck, a fenced backyard, a garden area, and several garden sheds. Enjoy shared access to premier fishing and recreational activities on Potato Lake, making this home a perfect retreat.

Additional Details:

Year Built	2007
Lot Acres	11.8
Lot Dimensions	261x1253x296x1409
Garage Stalls	3
School District	309
Taxes	\$4,784
Taxes with Assessments	\$4,784
Tax Year	2026

Additional Features:

Basement: Block, Crawl Space **Fuel:** Propane **Garage:** 3 **Heat:** Forced Air, Heat Pump **Sewer:** Private Sewer, Tank with Drainage Field
Water: 4-Inch Submersible, Private **Air Conditioning:** Central Air, Heat Pump

Driving Directions:

From 34/71 in Park Rapids, North on 71 to a right on 230th St. to a left on Gray Goose Drive to property.



Listed By:
Wolff & Simon Real Estate

Affinity Real Estate Inc. participates in the Regional Multiple Listing Service of Minnesota, Inc Broker Reciprocity (sm) program, allowing us to display other broker's listings on our website. All properties are subject to prior sale, change or withdrawal.



Call Affinity Real Estate

218-237-3333

info@affinityrealestate.com



Affinity Real Estate - 600 Park Avenue South - Park Rapids MN 56470



website: www.AffinityRealEstate.com | email: info@affinityrealestate.com | office: 218-237-3333 | fax: 218-237-3377

Affinity
REAL ESTATE INC

\$769,900
MLS 7067146 Lake Home
24425 Gray Goose Drive
Park Rapids MN 56470



website: www.AffinityRealEstate.com | email: info@affinityrealestate.com | office: 218-237-3333 | fax:218-237-3377



\$769,900
MLS 7067146 Lake Home
24425 Gray Goose Drive
Park Rapids MN 56470



website: www.AffinityRealEstate.com | email: info@affinityrealestate.com | office: 218-237-3333 | fax:218-237-3377



\$769,900
MLS 7067146 Lake Home
24425 Gray Goose Drive
Park Rapids MN 56470



website: www.AffinityRealEstate.com | email: info@affinityrealestate.com | office: 218-237-3333 | fax:218-237-3377



\$769,900
MLS 7067146 Lake Home
24425 Gray Goose Drive
Park Rapids MN 56470



website: www.AffinityRealEstate.com | email: info@affinityrealestate.com | office: 218-237-3333 | fax: 218-237-3377

Affinity
REAL ESTATE INC

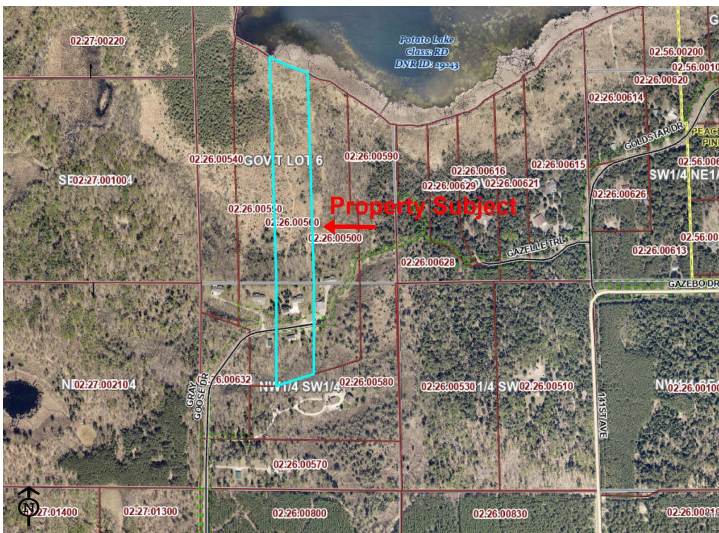
\$769,900
MLS 7067146 Lake Home
24425 Gray Goose Drive
Park Rapids MN 56470



website: www.AffinityRealEstate.com | email: info@affinityrealestate.com | office: 218-237-3333 | fax:218-237-3377



\$769,900
MLS 7067146 Lake Home
24425 Gray Goose Drive
Park Rapids MN 56470



website: www.AffinityRealEstate.com | email: info@affinityrealestate.com | office: 218-237-3333 | fax:218-237-3377



\$769,900
MLS 7067146 Lake Home
24425 Gray Goose Drive
Park Rapids MN 56470