



MLS 7067294 Residential

\$299,000

911 sq ft
2 bedrooms
1 baths

29211 Fieldstone Drive
Akeley MN 56433

Status: Active

Description:

Set on 5.7 heavily wooded acres in the heart of Minnesota’s Northwoods, this 2020-built home offers a level of privacy and quiet that’s hard to find. Tucked well back from the road, the setting feels completely secluded, with mature trees surrounding the property and wildlife seen here daily. The home itself is very well constructed and thoughtfully designed to take full advantage of the setting, highlighted by an incredible wraparound screened porch—perfect for enjoying peaceful mornings, evening sunsets, and everything in between without the bugs. A new, 12x12 storage shed provides excellent space for tools, toys, and outdoor equipment. Located near the Heartland Trail, Paul Bunyan State Forest, and within easy reach of area lakes and Itasca State Park, this property offers direct access to some of Minnesota’s best recreation while still being a short drive to Park Rapids, Nevis, and Walker for dining, shopping, and local events. A rare opportunity to own a newer-built home in a truly private Northwoods setting.

Additional Details:

| | |
|------------------------|---------|
| Year Built | 2020 |
| Lot Acres | 5.7 |
| Lot Dimensions | 395x621 |
| School District | 113 |
| Taxes | \$2,078 |
| Taxes with Assessments | \$2,078 |
| Tax Year | 2025 |

Additional Features:

Fuel: Propane **Heat:** Boiler, In-Floor Heating

Driving Directions:

From 71/34 in Park Rapids, Take Hwy. 34 East for 10.6 miles to a right onto County 33, follow for 4.2 miles to a left onto county 49. Continue for 1.9 miles to a right onto Fieldstone Dr., Right at the T and driveway is on the right.



Listed By:
Central MN Realty LLC

Affinity Real Estate Inc. participates in the Regional Multiple Listing Service of Minnesota, Inc Broker Reciprocity (sm) program, allowing us to display other broker’s listings on our website. All properties are subject to prior sale, change or withdrawal.



Call Affinity Real Estate

218-237-3333

info@affinityrealestate.com



Affinity Real Estate - 600 Park Avenue South - Park Rapids MN 56470



website: www.AffinityRealEstate.com | email: info@affinityrealestate.com | office: 218-237-3333 | fax: 218-237-3377

Affinity
REAL ESTATE INC

\$299,000
MLS 7067294 Residential
29211 Fieldstone Drive
Akeley MN 56433



website: www.AffinityRealEstate.com | email: info@affinityrealestate.com | office: 218-237-3333 | fax:218-237-3377

Affinity
REAL ESTATE INC

\$299,000
MLS 7067294 Residential
29211 Fieldstone Drive
Akeley MN 56433



website: www.AffinityRealEstate.com | email: info@affinityrealestate.com | office: 218-237-3333 | fax:218-237-3377

Affinity
REAL ESTATE INC

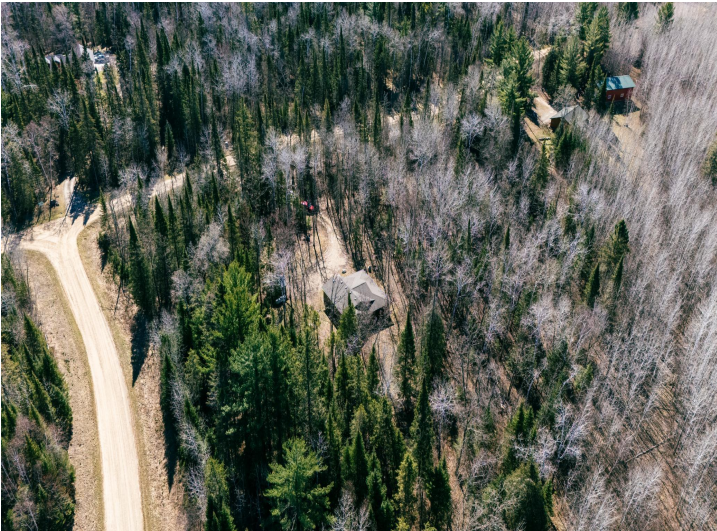
\$299,000
MLS 7067294 Residential
29211 Fieldstone Drive
Akeley MN 56433



website: www.AffinityRealEstate.com | email: info@affinityrealestate.com | office: 218-237-3333 | fax:218-237-3377



\$299,000
MLS 7067294 Residential
29211 Fieldstone Drive
Akeley MN 56433



website: www.AffinityRealEstate.com | email: info@affinityrealestate.com | office: 218-237-3333 | fax:218-237-3377



\$299,000
MLS 7067294 Residential
29211 Fieldstone Drive
Akeley MN 56433



website: www.AffinityRealEstate.com | email: info@affinityrealestate.com | office: 218-237-3333 | fax:218-237-3377



\$299,000
MLS 7067294 Residential
29211 Fieldstone Drive
Akeley MN 56433