



MLS 7067379 Residential

\$725,000

3,150 sq ft
4 bedrooms
3 baths

21601 Timber Hills Trail
Nisswa MN 56468

Status: Coming Soon

Description:

A gorgeous, well maintained 4BR, 3BA home located on a beautiful wooded lot in a the heart of the lakes area. Main floor amenities include 9' ceilings, hardwood floors, maple cabinetry, primary suite with full bath/steam shower & walk-in closets, bedroom, full bath, living room with gas fireplace and walk out to patio area, kitchen, dining area and main floor laundry. The lower level boasts spacious living room, 2 bedrooms, full bath & storage area. Home also has 3 car attached, heated, insulated & sheet rocked garage, backup full home generator, meticulous landscaping, waterfall, gorgeous flowers and plants throughout the property. Home is located on a quiet private drive and just a short distance from all the area's best amenities. This is your chance for a great place to call home.

Additional Details:

Year Built	2005
Lot Acres	1.2
Lot Dimensions	250x400x250x400xirreg.
Garage Stalls	3
School District	181
Taxes	\$3,477
Taxes with Assessments	\$3,502
Tax Year	2026

Additional Features:

Basement: Block, Full, Storage Space, Tile Shower **Fuel:** Natural Gas **Garage:** 3 **Heat:** Boiler, Dual Fuel/Off Peak, Forced Air, Fireplace(s), Hot Water, In-Floor Heating **Sewer:** Private Sewer, Tank with Drainage Field **Water:** Drilled, Private, Well **Air Conditioning:** Central Air

Driving Directions:

371 to Mission Rd to RT on Timber Hills Trail



Listed By:
Kurilla Real Estate LTD

Affinity Real Estate Inc. participates in the Regional Multiple Listing Service of Minnesota, Inc Broker Reciprocity (sm) program, allowing us to display other broker's listings on our website. All properties are subject to prior sale, change or withdrawal.



Call Affinity Real Estate

218-237-3333

info@affinityrealestate.com



Affinity Real Estate - 600 Park Avenue South - Park Rapids MN 56470



website: www.AffinityRealEstate.com | email: info@affinityrealestate.com | office: 218-237-3333 | fax:218-237-3377

Affinity
REAL ESTATE INC

\$725,000
MLS 7067379 Residential
21601 Timber Hills Trail
Nisswa MN 56468



website: www.AffinityRealEstate.com | email: info@affinityrealestate.com | office: 218-237-3333 | fax:218-237-3377

Affinity
REAL ESTATE INC

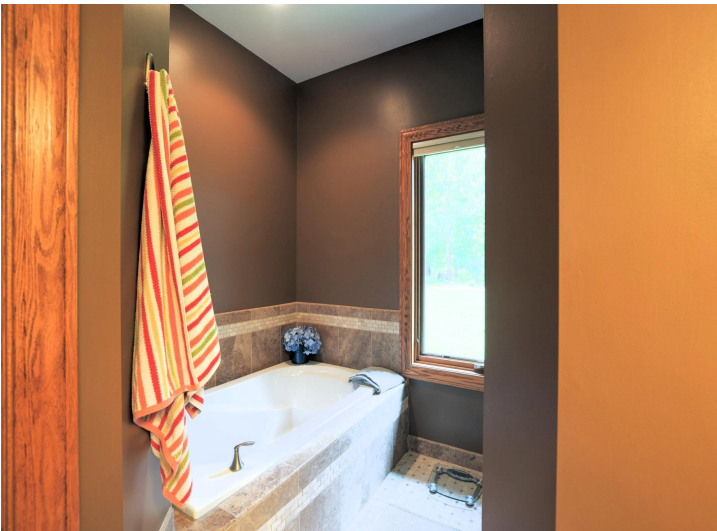
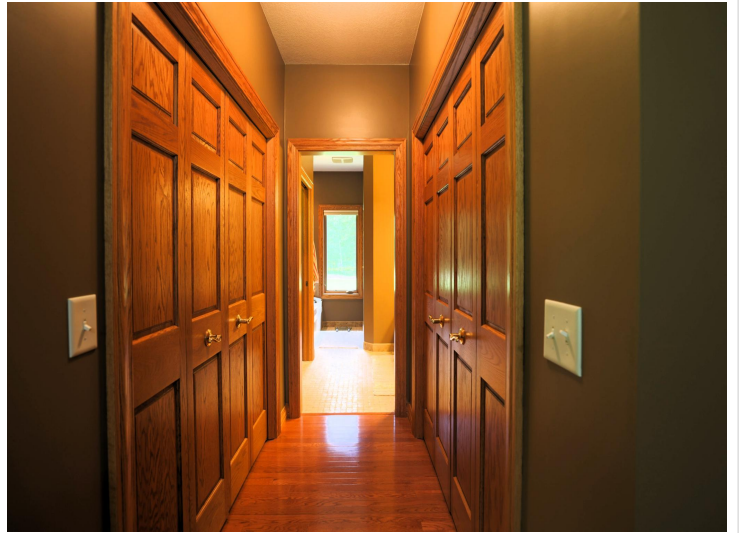
\$725,000
MLS 7067379 Residential
21601 Timber Hills Trail
Nisswa MN 56468



website: www.AffinityRealEstate.com | email: info@affinityrealestate.com | office: 218-237-3333 | fax:218-237-3377

Affinity
REAL ESTATE INC

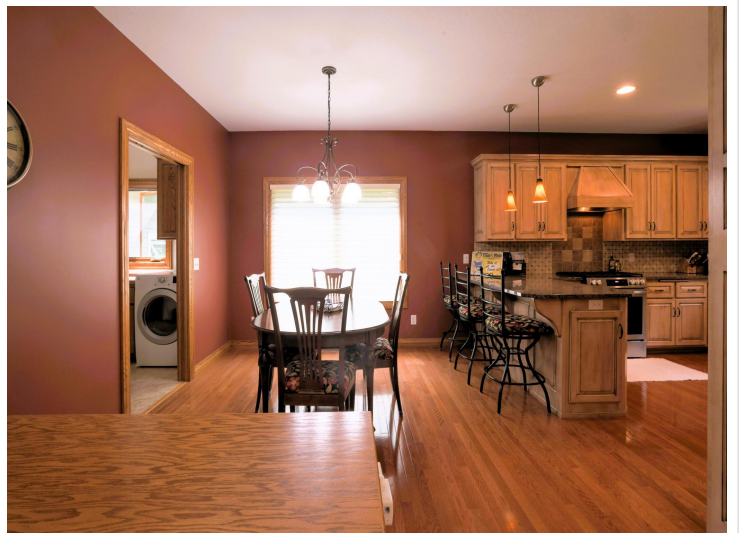
\$725,000
MLS 7067379 Residential
21601 Timber Hills Trail
Nisswa MN 56468



website: www.AffinityRealEstate.com | email: info@affinityrealestate.com | office: 218-237-3333 | fax:218-237-3377

Affinity
REAL ESTATE INC

\$725,000
MLS 7067379 Residential
21601 Timber Hills Trail
Nisswa MN 56468



website: www.AffinityRealEstate.com | email: info@affinityrealestate.com | office: 218-237-3333 | fax:218-237-3377



\$725,000
MLS 7067379 Residential
21601 Timber Hills Trail
Nisswa MN 56468



website: www.AffinityRealEstate.com | email: info@affinityrealestate.com | office: 218-237-3333 | fax: 218-237-3377

Affinity
REAL ESTATE INC

\$725,000
MLS 7067379 Residential
21601 Timber Hills Trail
Nisswa MN 56468



website: www.AffinityRealEstate.com | email: info@affinityrealestate.com | office: 218-237-3333 | fax:218-237-3377

Affinity
REAL ESTATE INC

\$725,000
MLS 7067379 Residential
21601 Timber Hills Trail
Nisswa MN 56468



website: www.AffinityRealEstate.com | email: info@affinityrealestate.com | office: 218-237-3333 | fax:218-237-3377

Affinity
REAL ESTATE INC

\$725,000
MLS 7067379 Residential
21601 Timber Hills Trail
Nisswa MN 56468



website: www.AffinityRealEstate.com | email: info@affinityrealestate.com | office: 218-237-3333 | fax:218-237-3377



\$725,000
MLS 7067379 Residential
21601 Timber Hills Trail
Nisswa MN 56468