



MLS 7067380 Residential

\$453,900

2,800 sq ft
5 bedrooms
3 baths

1012 Maple Ridge Court
Bemidji MN 56601

Status: Active

Description:

Welcome to 1012 Maple Ridge Court in Bemidji—a spacious and inviting ranch-style home set on 2+ private acres, offering the perfect blend of comfort, functionality, and location. This solid, well-designed home features true main-level living with an open and airy layout enhanced by vaulted ceilings that seamlessly connect the living room, dining area, and kitchen. The home has an updated : Furnace, Water Heater, Well pump, septic system pump and gutters for piece of mind.

The main floor offers two bedrooms, including a generously sized primary suite complete with a walk-in closet and an oversized en-suite bathroom featuring a relaxing tub and separate shower. A second full bathroom is conveniently located for guests. The kitchen is both practical and welcoming, highlighted by a large walk-in pantry and easy flow for everyday living and entertaining. Just off the dining area, step out onto the expansive deck—perfect for enjoying peaceful views of the beautifully wooded backyard. The living room is a perfect spot to cozy up to the fireplace on those chilly Minnesota days.

Downstairs, the home opens up into a large lower level designed for flexibility and space. Here you'll find three additional bedrooms, another full bathroom, and a massive bonus room ideal for a home gym, game room, hobby space, or extra storage. The walkout lower-level family room provides direct access to the backyard, bringing in natural light and extending your living space outdoors.

The oversized three-stall attached garage offers excellent storage, and just beyond it is an impressive 23x26 finished space with its own garage door—ideal for a workshop, studio, or home-based business. The property also includes a dog kennel with a dog house, making it a great fit for pet lovers.

Surrounded by mature trees, the 2+ acre yard provides privacy and a serene setting, all while being just minutes from shopping, dining, and everyday amenities in Bemidji. This is the perfect opportunity to enjoy space, comfort, and convenience all in one place.

Additional Details:

Year Built 1997
Lot Acres 2.19
Lot Dimensions 268x370

	Listed By	Headwaters Realty Services LLC
	School District	31
Taxes	\$3,938	
Taxes with Assessment	\$3,718	
Tax Year	2026	



Call Affinity Real Estate
218-237-3333
info@affinityrealestate.com



Affinity Real Estate - 600 Park Avenue South - Park Rapids MN 56470



website: www.AffinityRealEstate.com | email: info@affinityrealestate.com | office: 218-237-3333 | fax:218-237-3377

Affinity
REAL ESTATE INC

\$453,900
MLS 7067380 Residential
1012 Maple Ridge Court
Bemidji MN 56601



website: www.AffinityRealEstate.com | email: info@affinityrealestate.com | office: 218-237-3333 | fax:218-237-3377

Affinity
REAL ESTATE INC

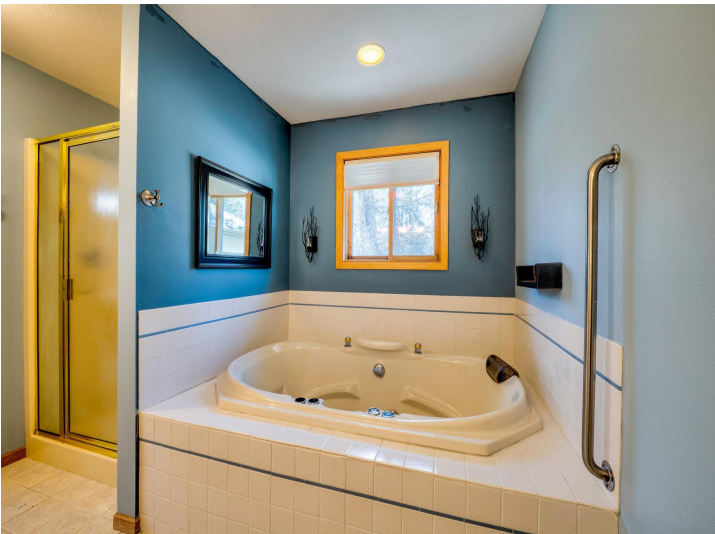
\$453,900
MLS 7067380 Residential
1012 Maple Ridge Court
Bemidji MN 56601



website: www.AffinityRealEstate.com | email: info@affinityrealestate.com | office: 218-237-3333 | fax:218-237-3377

Affinity
REAL ESTATE INC

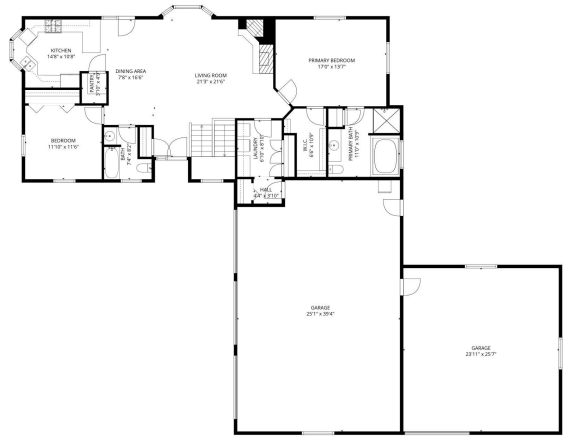
\$453,900
MLS 7067380 Residential
1012 Maple Ridge Court
Bemidji MN 56601



website: www.AffinityRealEstate.com | email: info@affinityrealestate.com | office: 218-237-3333 | fax:218-237-3377

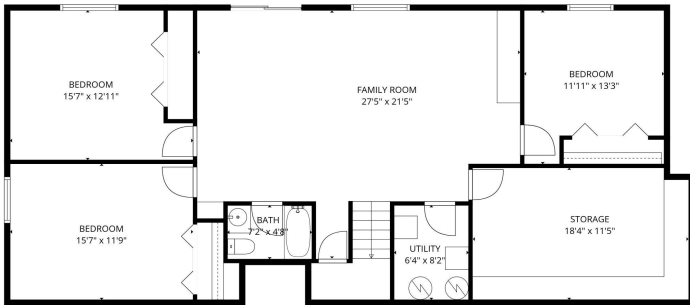


\$453,900
MLS 7067380 Residential
1012 Maple Ridge Court
Bemidji MN 56601



TOTAL: 2605 sq. ft.
 Basement: 1184 sq. ft, 1st floor: 1421 sq. ft.
 EXCLUDED AREAS: STORAGE: 208 sq. ft, GARAGE: 1567 sq. ft, BAY WINDOW: 11 sq. ft.
 WALLS: 267 sq. ft.

FLOOR PLAN CREATED BY CURSIO.COM AND MEASUREMENTS OBTAINED VISUALLY. PLEASE SEE US FOR SUPPLEMENTAL INFORMATION.



TOTAL: 2605 sq. ft.
 Basement: 1184 sq. ft, 1st floor: 1421 sq. ft.
 EXCLUDED AREAS: STORAGE: 208 sq. ft, GARAGE: 1567 sq. ft, BAY WINDOW: 11 sq. ft.
 WALLS: 267 sq. ft.

FLOOR PLAN CREATED BY CURSIO.COM AND MEASUREMENTS OBTAINED VISUALLY. PLEASE SEE US FOR SUPPLEMENTAL INFORMATION.



TOTAL: 2605 sq. ft.
 Basement: 1184 sq. ft, 1st floor: 1421 sq. ft.
 EXCLUDED AREAS: STORAGE: 208 sq. ft, GARAGE: 1567 sq. ft, BAY WINDOW: 11 sq. ft.
 WALLS: 267 sq. ft.

FLOOR PLAN CREATED BY CURSIO.COM AND MEASUREMENTS OBTAINED VISUALLY. PLEASE SEE US FOR SUPPLEMENTAL INFORMATION.

website: www.AffinityRealEstate.com | email: info@affinityrealestate.com | office: 218-237-3333 | fax: 218-237-3377



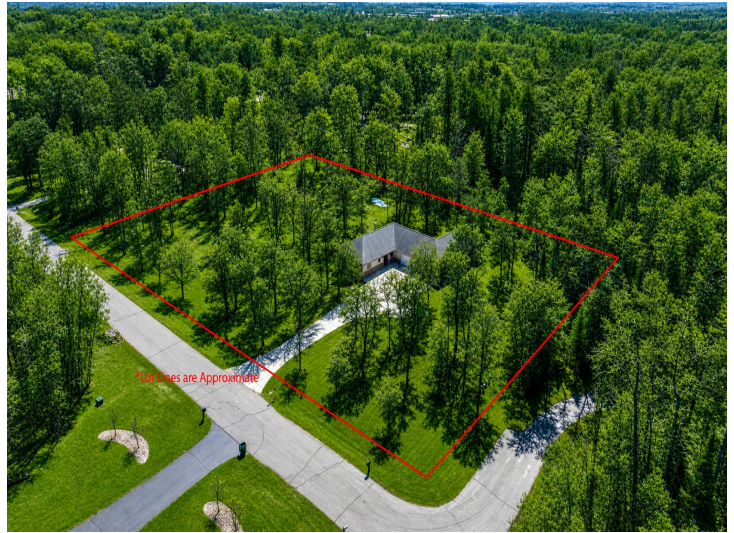
\$453,900
 MLS 7067380 Residential
 1012 Maple Ridge Court
 Bemidji MN 56601



website: www.AffinityRealEstate.com | email: info@affinityrealestate.com | office: 218-237-3333 | fax:218-237-3377

Affinity
REAL ESTATE INC

\$453,900
MLS 7067380 Residential
1012 Maple Ridge Court
Bemidji MN 56601



website: www.AffinityRealEstate.com | email: info@affinityrealestate.com | office: 218-237-3333 | fax:218-237-3377

Affinity
REAL ESTATE INC

\$453,900
MLS 7067380 Residential
1012 Maple Ridge Court
Bemidji MN 56601



website: www.AffinityRealEstate.com | email: info@affinityrealestate.com | office: 218-237-3333 | fax:218-237-3377



\$453,900
MLS 7067380 Residential
1012 Maple Ridge Court
Bemidji MN 56601