



MLS 7067493 Lake Home

\$159,900

1,280 sq ft
3 bedrooms
2 baths

1685 Timber Lane
Cushing MN 56443

Waterfront: Fish Trap

Status: Active

Description:

Welcome to this well-maintained 3-bedroom, 2-bath home set on a spacious corner lot with deeded access to Fish Trap Lake. The functional layout offers comfortable one-level living with an open main living area that flows easily for everyday use and entertaining. Enjoy multiple outdoor spaces including a large front patio and a private back deck—perfect for relaxing or hosting. Located in a peaceful setting, this property is ideal as a year-round home, cabin getaway, or investment opportunity.

Additional Details:

| | |
|------------------------|--------------------|
| Year Built | 1993 |
| Lot Acres | 0.811 |
| Lot Dimensions | 119x34x219x137x265 |
| School District | 2170 |
| Taxes | \$300 |
| Taxes with Assessments | \$300 |
| Tax Year | 2025 |

Additional Features:

Fuel: Propane **Heat:** Forced Air

Driving Directions:

From Motley US 10 West for about 7.7 miles. Left on 320th Street for about .2 miles. Then take a right on Azure for 1.5 miles to Timber Lane . Home on left in about .3 miles.



Listed By:
Woods to Water Real Estate

Affinity Real Estate Inc. participates in the Regional Multiple Listing Service of Minnesota, Inc Broker Reciprocity (sm) program, allowing us to display other broker's listings on our website. All properties are subject to prior sale, change or withdrawal.



Call Affinity Real Estate

218-237-3333

info@affinityrealestate.com



Affinity Real Estate - 600 Park Avenue South - Park Rapids MN 56470



website: www.AffinityRealEstate.com | email: info@affinityrealestate.com | office: 218-237-3333 | fax:218-237-3377

Affinity
REAL ESTATE INC

\$159,900
MLS 7067493 Lake Home
1685 Timber Lane
Cushing MN 56443



website: www.AffinityRealEstate.com | email: info@affinityrealestate.com | office: 218-237-3333 | fax: 218-237-3377

Affinity
REAL ESTATE INC

\$159,900
MLS 7067493 Lake Home
1685 Timber Lane
Cushing MN 56443



website: www.AffinityRealEstate.com | email: info@affinityrealestate.com | office: 218-237-3333 | fax:218-237-3377

Affinity
REAL ESTATE INC

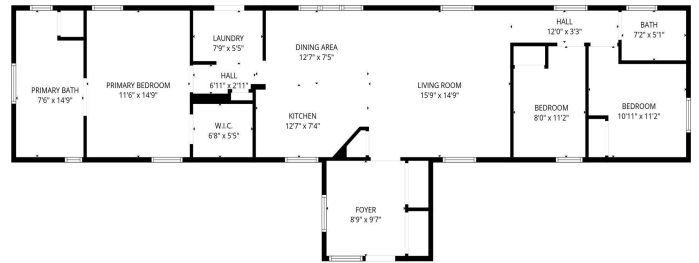
\$159,900
MLS 7067493 Lake Home
1685 Timber Lane
Cushing MN 56443



website: www.AffinityRealEstate.com | email: info@affinityrealestate.com | office: 218-237-3333 | fax:218-237-3377

Affinity
REAL ESTATE INC

\$159,900
MLS 7067493 Lake Home
1685 Timber Lane
Cushing MN 56443



website: www.AffinityRealEstate.com | email: info@affinityrealestate.com | office: 218-237-3333 | fax: 218-237-3377



\$159,900
 MLS 7067493 Lake Home
 1685 Timber Lane
 Cushing MN 56443