



MLS 7067494 Residential

\$599,000

2,500 sq ft
3 bedrooms
4 baths

14526 Wildwood Drive
Crosslake MN 56442

Status: Active

Description:

Crosslake home offering the best of the lake-area lifestyle, just minutes from area amenities, dining, shopping, and recreation this 3-bedroom, 4-bath is designed for comfort and flexibility, the home features two primary bedroom ensuites and a striking three-sided gas fireplace anchoring the main living space. The walkout lower level with in-floor heat provides ideal space for gathering after a day on the water or trails. Recent updates include a 2024 roof and 2025 furnace, delivering confidence and long-term value. Abundant garage space accommodates boats, ATVs, and lake gear, with additional upper-level storage/loft space in one of the garages. Unwind on the covered wraparound porch, surrounded by a serene setting that embodies relaxed Northwoods living. With the exterior scheduled to be freshly stained, this home is truly move-in ready and perfectly suited for year-round Crosslake enjoyment.

Additional Details:

| | |
|------------------------|-----------------|
| Year Built | 2004 |
| Lot Acres | 1.19 |
| Lot Dimensions | 298x104x352x212 |
| Garage Stalls | 4 |
| School District | 186 |
| Taxes | \$2,685 |
| Taxes with Assessments | \$2,710 |
| Tax Year | 2026 |

Additional Features:

Basement: Block, Daylight/Lookout Windows, Finished, Full, Storage Space, Walkout **Fuel:** Natural Gas **Garage:** 4 **Heat:** Forced Air, In-Floor Heating **Sewer:** Tank with Drainage Field **Water:** Drilled, Well **Air Conditioning:** Central Air

Driving Directions:

From Co Rd 3/Co Rd 66 in Crosslake (Holiday), East on 3 to Right on Co Rd 37 to Left on Wildwood Dr to property on Left.



Listed By:
Edina Realty, Inc.

Affinity Real Estate Inc. participates in the Regional Multiple Listing Service of Minnesota, Inc Broker Reciprocity (sm) program, allowing us to display other broker's listings on our website. All properties are subject to prior sale, change or withdrawal.



Call Affinity Real Estate

218-237-3333

info@affinityrealestate.com



Affinity Real Estate - 600 Park Avenue South - Park Rapids MN 56470



website: www.AffinityRealEstate.com | email: info@affinityrealestate.com | office: 218-237-3333 | fax: 218-237-3377

Affinity
REAL ESTATE INC

\$599,000
MLS 7067494 Residential
14526 Wildwood Drive
Crosslake MN 56442



website: www.AffinityRealEstate.com | email: info@affinityrealestate.com | office: 218-237-3333 | fax:218-237-3377

Affinity
REAL ESTATE INC

\$599,000
MLS 7067494 Residential
14526 Wildwood Drive
Crosslake MN 56442



website: www.AffinityRealEstate.com | email: info@affinityrealestate.com | office: 218-237-3333 | fax:218-237-3377

Affinity
REAL ESTATE INC

\$599,000
MLS 7067494 Residential
14526 Wildwood Drive
Crosslake MN 56442



website: www.AffinityRealEstate.com | email: info@affinityrealestate.com | office: 218-237-3333 | fax:218-237-3377

Affinity
REAL ESTATE INC

\$599,000
MLS 7067494 Residential
14526 Wildwood Drive
Crosslake MN 56442



website: www.AffinityRealEstate.com | email: info@affinityrealestate.com | office: 218-237-3333 | fax:218-237-3377

Affinity
REAL ESTATE INC

\$599,000
MLS 7067494 Residential
14526 Wildwood Drive
Crosslake MN 56442



website: www.AffinityRealEstate.com | email: info@affinityrealestate.com | office: 218-237-3333 | fax: 218-237-3377

Affinity
REAL ESTATE INC

\$599,000
MLS 7067494 Residential
14526 Wildwood Drive
Crosslake MN 56442



website: www.AffinityRealEstate.com | email: info@affinityrealestate.com | office: 218-237-3333 | fax: 218-237-3377

Affinity
REAL ESTATE INC

\$599,000
MLS 7067494 Residential
14526 Wildwood Drive
Crosslake MN 56442

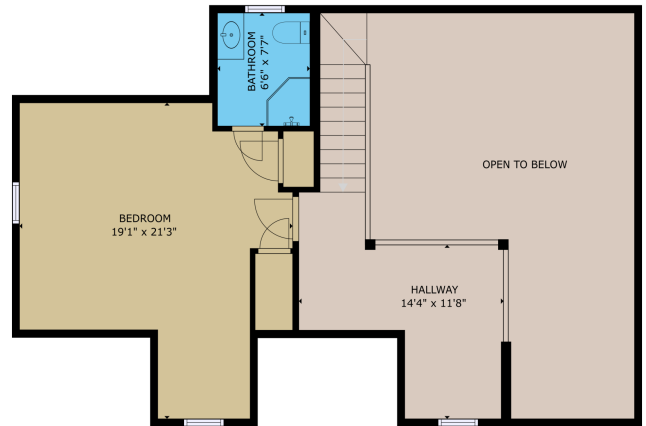
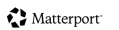


FIGURE 3
DESIGN: INTERNAL AREA
 FLOOR 0: 1947 sq ft, FLOOR 1: 1200 sq ft, FLOOR 2: 1215 sq ft
 * 2024.05.06.06
 DIMENSIONS AND CONSTRUCTION ARE APPROXIMATE. ACTUAL MAY VARY.



website: www.AffinityRealEstate.com | email: info@affinityrealestate.com | office: 218-237-3333 | fax: 218-237-3377



\$599,000
 MLS 7067494 Residential
 14526 Wildwood Drive
 Crosslake MN 56442



FIGURE 1
DESIGN: EXTERNAL AREA
 FLOOR 1: 1047 sq ft, FLOOR 2: 1382 sq ft, FLOOR 3: 523 sq ft
 TOTAL: 2952 sq ft
SIZE AND DIMENSIONS ARE APPROXIMATE. ACTUAL MAY VARY.

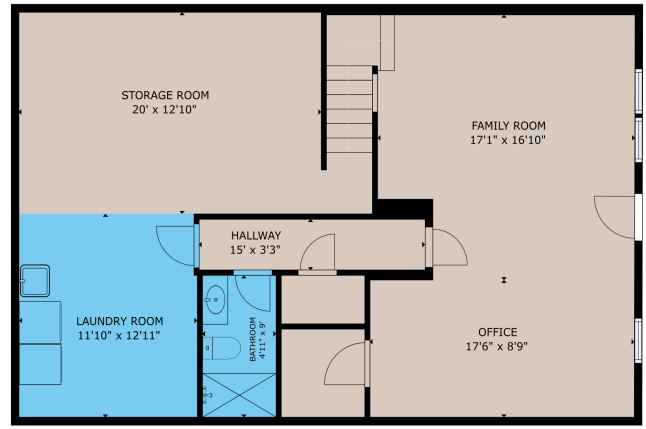
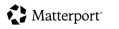


FIGURE 2
DESIGN: EXTERNAL AREA
 FLOOR 2: 1047 sq ft, FLOOR 3: 1382 sq ft, FLOOR 1: 523 sq ft
 TOTAL: 2952 sq ft
SIZE AND DIMENSIONS ARE APPROXIMATE. ACTUAL MAY VARY.



website: www.AffinityRealEstate.com | email: info@affinityrealestate.com | office: 218-237-3333 | fax: 218-237-3377



\$599,000
 MLS 7067494 Residential
 14526 Wildwood Drive
 Crosslake MN 56442



website: www.AffinityRealEstate.com | email: info@affinityrealestate.com | office: 218-237-3333 | fax:218-237-3377



\$599,000
MLS 7067494 Residential
14526 Wildwood Drive
Crosslake MN 56442