



MLS 7067541 Land

**\$299,900**

80 Acres  
Raw Land

55000 Kueber Road  
Park Rapids MN 56470

Status: Active

**Description:**

King of the hill! Beautiful 80-acre recreational property offering breathtaking 360-degree views from the highest point on the land. This well-maintained parcel features a mowed trail system throughout, electricity already in place for an RV, and a scenic campsite near a small lake. Ideal for hunting and outdoor recreation with four permanent hunting stands, a 20-acre hay field, accessible water, and extensive trails across the property. Located directly across the road from 640 acres of State Land and less than 2 miles from Itasca State Park, this property is perfect for a hunting retreat, recreational getaway, or future dream build. Call today to schedule your private tour!

**Additional Details:**

Lot Acres	80
Lot Dimensions	1320 x 2640
School District	309
Taxes	\$1,122
Taxes with Assessments	\$1,122
Tax Year	2026

**Additional Features:**

**Driving Directions:**

From Park Rapids - Take Hwy 71 N 14 Miles to CR 42, turn L and proceed 4 miles and turn R on CR 127. Continue 2 miles until the T and take a L on Kueber Rd and property will be on the right side. There will be a gate.



Listed By:  
Affinity Real Estate Inc.

Affinity Real Estate Inc. participates in the Regional Multiple Listing Service of Minnesota, Inc Broker Reciprocity (sm) program, allowing us to display other broker's listings on our website. All properties are subject to prior sale, change or withdrawal.



**Call Affinity Real Estate**

**218-237-3333**

**info@affinityrealestate.com**



**Affinity Real Estate - 600 Park Avenue South - Park Rapids MN 56470**



website: [www.AffinityRealEstate.com](http://www.AffinityRealEstate.com) | email: [info@affinityrealestate.com](mailto:info@affinityrealestate.com) | office: 218-237-3333 | fax: 218-237-3377



**\$299,900**  
MLS 7067541 Land  
55000 Kueber Road  
Park Rapids MN 56470



website: [www.AffinityRealEstate.com](http://www.AffinityRealEstate.com) | email: [info@affinityrealestate.com](mailto:info@affinityrealestate.com) | office: 218-237-3333 | fax:218-237-3377



**\$299,900**  
MLS 7067541 Land  
55000 Kueber Road  
Park Rapids MN 56470



website: [www.AffinityRealEstate.com](http://www.AffinityRealEstate.com) | email: [info@affinityrealestate.com](mailto:info@affinityrealestate.com) | office: 218-237-3333 | fax:218-237-3377



**\$299,900**  
MLS 7067541 Land  
55000 Kueber Road  
Park Rapids MN 56470



website: [www.AffinityRealEstate.com](http://www.AffinityRealEstate.com) | email: [info@affinityrealestate.com](mailto:info@affinityrealestate.com) | office: 218-237-3333 | fax:218-237-3377



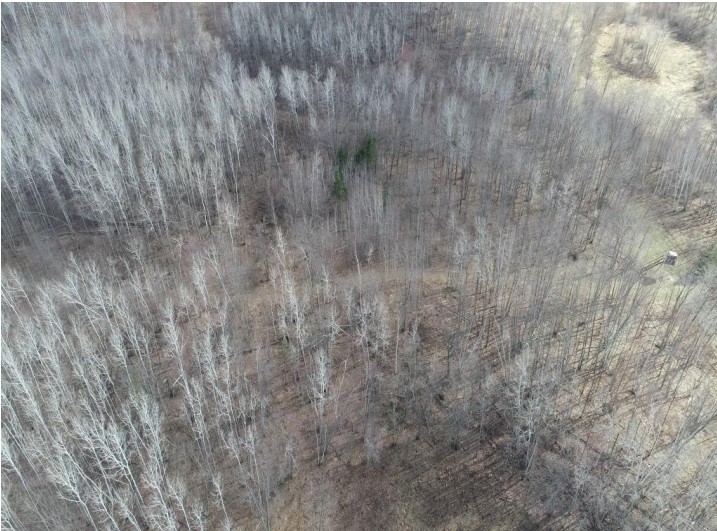
**\$299,900**  
MLS 7067541 Land  
55000 Kueber Road  
Park Rapids MN 56470



website: [www.AffinityRealEstate.com](http://www.AffinityRealEstate.com) | email: [info@affinityrealestate.com](mailto:info@affinityrealestate.com) | office: 218-237-3333 | fax:218-237-3377



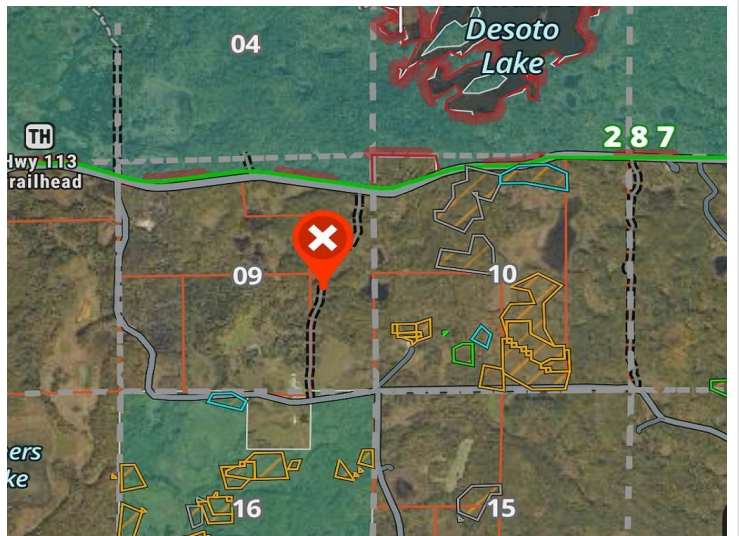
**\$299,900**  
MLS 7067541 Land  
55000 Kueber Road  
Park Rapids MN 56470



website: [www.AffinityRealEstate.com](http://www.AffinityRealEstate.com) | email: [info@affinityrealestate.com](mailto:info@affinityrealestate.com) | office: 218-237-3333 | fax:218-237-3377



**\$299,900**  
MLS 7067541 Land  
55000 Kueber Road  
Park Rapids MN 56470



website: [www.AffinityRealEstate.com](http://www.AffinityRealEstate.com) | email: [info@affinityrealestate.com](mailto:info@affinityrealestate.com) | office: 218-237-3333 | fax:218-237-3377



**\$299,900**  
MLS 7067541 Land  
55000 Kueber Road  
Park Rapids MN 56470