



MLS 7067596 Land

**\$79,900**

13.3 Acres  
Raw Land

TBD Pioneer Avenue  
Aitkin MN 56431

Status: Active

**Description:**

Discover the perfect Northwoods escape with this beautiful 13-acre parcel located next to Farm Island Lake. Situated on a paved county road, this property offers easy year-round access while maintaining a peaceful, quiet country setting. Surrounded by numerous lakes and abundant wildlife, it's an outdoor enthusiast's dream. Enjoy exceptional hunting, fishing, hiking, ATV trails, and snowmobiling right from your doorstep. Whether you're looking to build your dream home, cabin, or simply invest in a slice of Minnesota wilderness, this property offers endless opportunities to enjoy the best of the outdoors.

**Additional Details:**

Lot Acres	13.3
Lot Dimensions	700x1315x210x1415
School District	8001
Taxes	\$78
Taxes with Assessments	\$78
Tax Year	2026

**Additional Features:**

**Driving Directions:**

From MN-210 E: Slight right toward Co Rd 12, continue on Co Rd 12. Co Rd 12 turns into Great River Rd/MN-210 E. Turn right onto Pioneer Ave, lot will be roughly 6 miles down, on the right.



Listed By:  
eXp Realty

Affinity Real Estate Inc. participates in the Regional Multiple Listing Service of Minnesota, Inc Broker Reciprocity (sm) program, allowing us to display other broker's listings on our website. All properties are subject to prior sale, change or withdrawal.



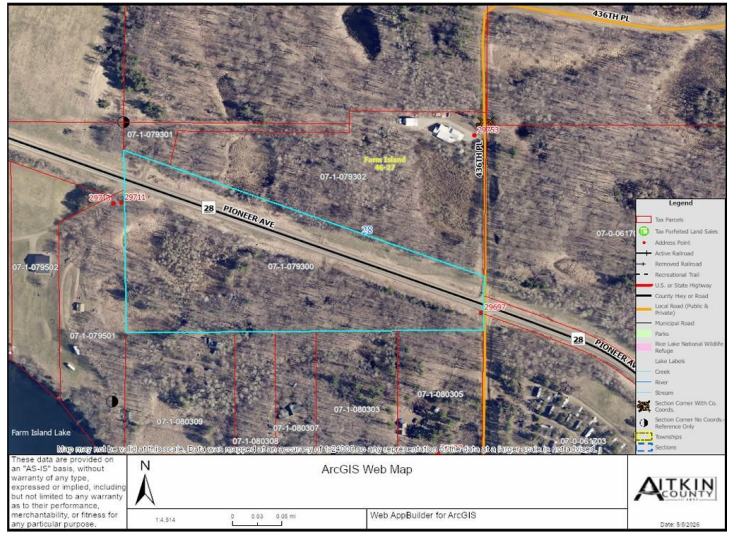
Call Affinity Real Estate

**218-237-3333**

[info@affinityrealestate.com](mailto:info@affinityrealestate.com)



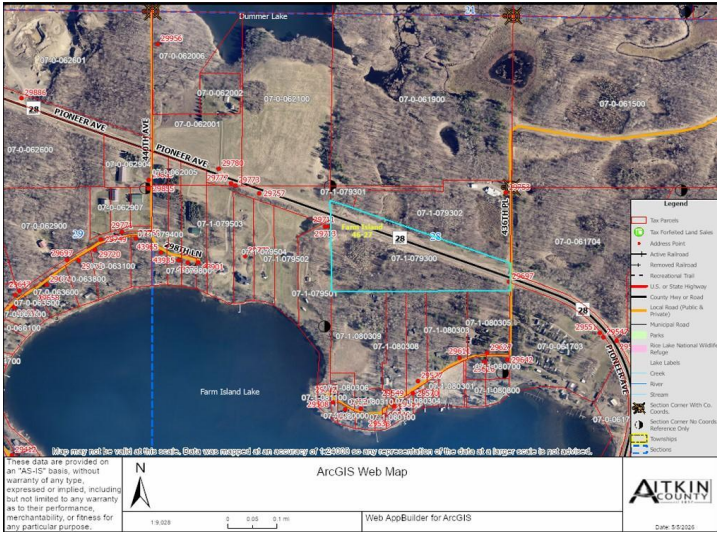
Affinity Real Estate - 600 Park Avenue South - Park Rapids MN 56470



website: [www.AffinityRealEstate.com](http://www.AffinityRealEstate.com) | email: [info@affinityrealestate.com](mailto:info@affinityrealestate.com) | office: 218-237-3333 | fax: 218-237-3377



**\$79,900**  
 MLS 7067596 Land  
 TBD Pioneer Avenue  
 Aitkin MN 56431



website: [www.AffinityRealEstate.com](http://www.AffinityRealEstate.com) | email: [info@affinityrealestate.com](mailto:info@affinityrealestate.com) | office: 218-237-3333 | fax:218-237-3377



**\$79,900**  
 MLS 7067596 Land  
 TBD Pioneer Avenue  
 Aitkin MN 56431