



MLS 7067931 Residential

\$465,000

2,763 sq ft
2 bedrooms
3 baths

36571 County Line Road
Hill City MN 55748

Status: Active

Description:

Big, bold, and impossible to ignore—this property is ready to impress at every turn. Set on 38.6 acres with direct access to hundreds of acres of Blandin and State land, this is a dream come true for outdoor enthusiasts. Hunt, hike, ride, or simply enjoy the privacy right out your back door! Inside, the home offers incredible flexibility. With over 2700 finished square feet, this two story beauty is currently configured as a 2-bedroom but has the potential to be a 5-bedroom home, giving you room to grow, host, or create the spaces you need. With **three** bathrooms—one on each level—comfort and convenience are built in. The upper-level features your primary bedroom, bath and walk-in closet as well as a loft overlooking the main floor living area. If you need a workout space, art studio or a “work from home” office you are going to LOVE the loft! Main-level living is easy here, with a bedroom, bathroom, and laundry all on one floor. The four-season porch with a cozy wood-burning stove is a favorite spot year-round, offering the perfect place to unwind no matter the season. When it comes to outdoor living, this home truly shines. Enjoy an upper-level deck, main-level back deck, and a classic covered front porch—Ideal for morning coffee and great conversations. The lower level expands your living space even further with a 14x26 family room, three flexible rooms for hobbies or guests, and an additional bathroom. Step outside and you’ll find everything you need for work, play, and storage: A 28x36 newer garage with multiple access points; A 24x40 Morton building for equipment or recreational vehicles; and MY favorite ~ A beautiful gazebo with electricity and large deck space, perfect for gatherings or quiet evenings. With space, versatility, and direct access to the outdoors, this property offers a lifestyle that’s hard to match.

Additional Details:

Year Built	1993
Lot Acres	38.63
Lot Dimensions	1325x1267
Garage Stalls	4
School District	2
Taxes	\$2,376
Taxes with Assessments	\$2,376
Tax Year	2026

Additional Features:

Full, Partially Finished, Storage Space, Sump Pump
Listed By: **Century 21 Land of Lakes**
Conditioning: Window Unit(s)

Driving Real Estate Inc. participates in the Regional Multiple Listing Services of Minnesota, Inc Broker Reciprocity (sm) program, allowing us to display other broker's listings on our website. All properties are subject to prior sale, change or withdrawal.



Call Affinity Real Estate

218-237-3333

info@affinityrealestate.com

Fuel: Propane, Garage: 4 Heat: Forced Air Sewer: Private Sewer



Affinity Real Estate - 600 Park Avenue South - Park Rapids MN 56470



website: www.AffinityRealEstate.com | email: info@affinityrealestate.com | office: 218-237-3333 | fax:218-237-3377

Affinity
REAL ESTATE INC

\$465,000
MLS 7067931 Residential
36571 County Line Road
Hill City MN 55748



website: www.AffinityRealEstate.com | email: info@affinityrealestate.com | office: 218-237-3333 | fax: 218-237-3377

Affinity
REAL ESTATE INC

\$465,000
MLS 7067931 Residential
36571 County Line Road
Hill City MN 55748



website: www.AffinityRealEstate.com | email: info@affinityrealestate.com | office: 218-237-3333 | fax: 218-237-3377

Affinity
REAL ESTATE INC

\$465,000
MLS 7067931 Residential
36571 County Line Road
Hill City MN 55748



website: www.AffinityRealEstate.com | email: info@affinityrealestate.com | office: 218-237-3333 | fax:218-237-3377



\$465,000
MLS 7067931 Residential
36571 County Line Road
Hill City MN 55748



website: www.AffinityRealEstate.com | email: info@affinityrealestate.com | office: 218-237-3333 | fax:218-237-3377



\$465,000
MLS 7067931 Residential
36571 County Line Road
Hill City MN 55748



website: www.AffinityRealEstate.com | email: info@affinityrealestate.com | office: 218-237-3333 | fax: 218-237-3377

Affinity
REAL ESTATE INC

\$465,000
MLS 7067931 Residential
36571 County Line Road
Hill City MN 55748



website: www.AffinityRealEstate.com | email: info@affinityrealestate.com | office: 218-237-3333 | fax:218-237-3377

Affinity
REAL ESTATE INC

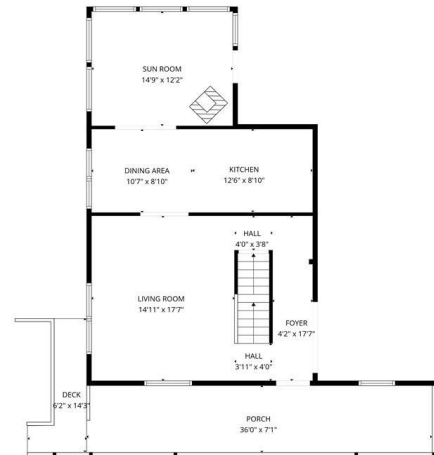
\$465,000
MLS 7067931 Residential
36571 County Line Road
Hill City MN 55748



website: www.AffinityRealEstate.com | email: info@affinityrealestate.com | office: 218-237-3333 | fax:218-237-3377



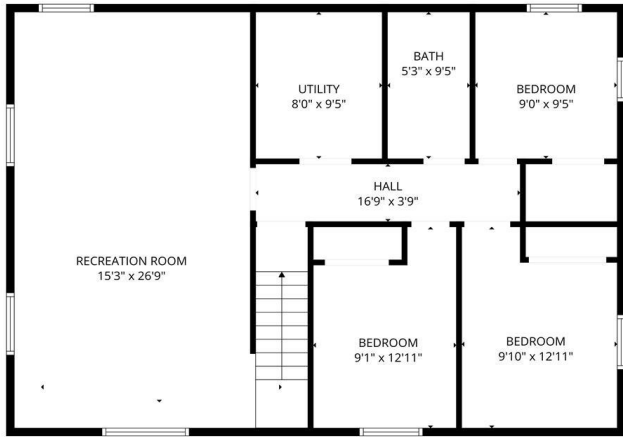
\$465,000
MLS 7067931 Residential
36571 County Line Road
Hill City MN 55748



website: www.AffinityRealEstate.com | email: info@affinityrealestate.com | office: 218-237-3333 | fax: 218-237-3377



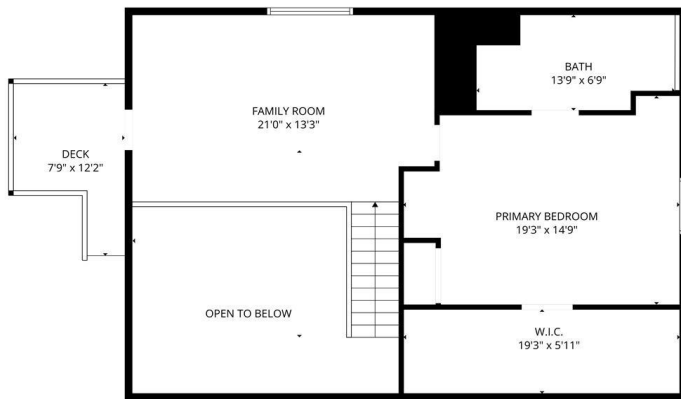
\$465,000
 MLS 7067931 Residential
 36571 County Line Road
 Hill City MN 55748



FLOOR PLAN CREATED BY CUBICASA APP. MEASUREMENTS DEEMED HIGHLY RELIABLE BUT NOT GUARANTEED.



FLOOR PLAN CREATED BY CUBICASA APP. MEASUREMENTS DEEMED HIGHLY RELIABLE BUT NOT GUARANTEED.



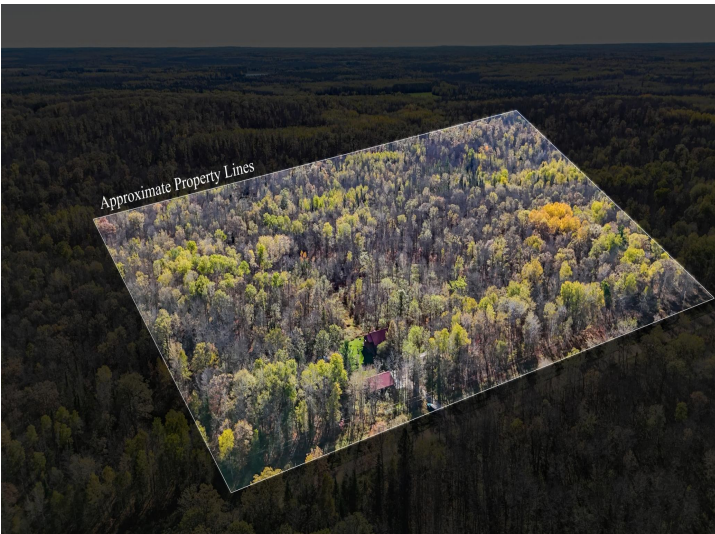
FLOOR PLAN CREATED BY CUBICASA APP. MEASUREMENTS DEEMED HIGHLY RELIABLE BUT NOT GUARANTEED.



website: www.AffinityRealEstate.com | email: info@affinityrealestate.com | office: 218-237-3333 | fax: 218-237-3377



\$465,000
 MLS 7067931 Residential
 36571 County Line Road
 Hill City MN 55748



website: www.AffinityRealEstate.com | email: info@affinityrealestate.com | office: 218-237-3333 | fax:218-237-3377



\$465,000
MLS 7067931 Residential
36571 County Line Road
Hill City MN 55748



website: www.AffinityRealEstate.com | email: info@affinityrealestate.com | office: 218-237-3333 | fax:218-237-3377



\$465,000
MLS 7067931 Residential
36571 County Line Road
Hill City MN 55748