



MLS 7068039 Lake Land

\$320,000

Description:

Rare opportunity to own a west-facing lot on highly sought-after Ox Lake. This beautifully wooded parcel features a gentle elevation to 141 feet of hard-sand shoreline—ideal for swimming, relaxing, and enjoying sunset views. A mix of pines, hardwoods, and white birch creates a scenic, private setting.

Ox Lake is known for excellent fishing, boating, and exceptional 28-foot water clarity. As part of the Ox Lake Landing Association, the property includes private lake access with no public access, offering a quieter, more secluded environment.

Located on a paved road just minutes from downtown Crosslake, with convenient access to shopping, dining, golf, and recreational trails. Bring your building plans and make it your own—last west-facing lot available.

Additional Details:

Lot Acres	0.51
Lot Dimensions	29x41x228x81x64x198
School District	186
Taxes	\$1,382
Taxes with Assessments	\$1,382
Tax Year	2026

Additional Features:

Driving Directions:

Cty Rd 11 to Paul Bunyan Scenic Bwy, R on Daggett Pine Rd, L on Ox Lake Landing, Lot on R



Listed By:
Pemberton RE

Affinity Real Estate Inc. participates in the Regional Multiple Listing Service of Minnesota, Inc Broker Reciprocity (sm) program, allowing us to display other broker's listings on our website. All properties are subject to prior sale, change or withdrawal.



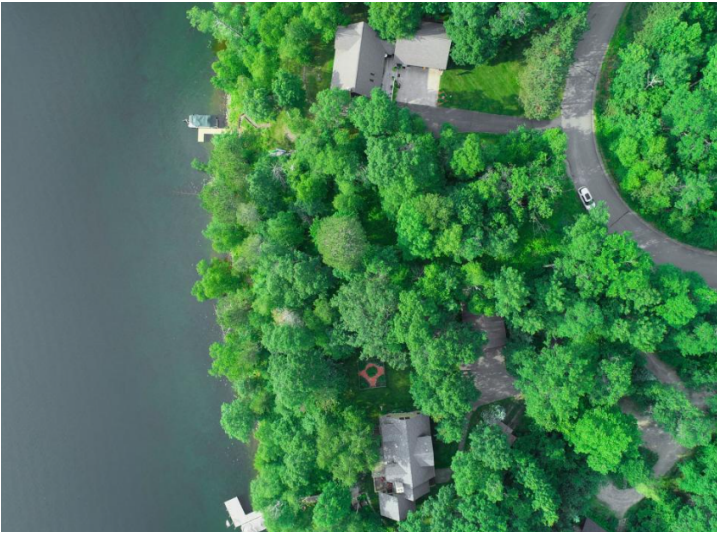
Call Affinity Real Estate

218-237-3333

info@affinityrealestate.com



Affinity Real Estate - 600 Park Avenue South - Park Rapids MN 56470



website: www.AffinityRealEstate.com | email: info@affinityrealestate.com | office: 218-237-3333 | fax:218-237-3377



\$320,000
MLS 7068039 Lake Land
38284 Ox Lake Landing
Crosslake MN 56442



website: www.AffinityRealEstate.com | email: info@affinityrealestate.com | office: 218-237-3333 | fax:218-237-3377



\$320,000
MLS 7068039 Lake Land
38284 Ox Lake Landing
Crosslake MN 56442