



MLS 7068062 Land

\$185,000

20 Acres
Raw Land

27100 County Road 132
Detroit Lakes MN 56501

Status: Active

Description:

20 acres located just 10 miles north of Detroit Lakes on a paved road. This versatile parcel offers a great mix of open ground and light woods—ideal for building, hobby farming, or investment. Private, quiet setting with beautiful natural surroundings and abundant wildlife.

The property includes a 32 x 42 pole shed, an existing well and septic system (installed in 2010), which saves significant upfront development costs. Fertile soil and usable terrain provide flexibility for a variety of uses.

Excellent opportunity to own a ready-to-build acreage in a highly desirable area—close to lakes, recreation, and town amenities. Bring your camper, park model, trailer house or build your dream shed house or custom home on this incredible property.

Additional Details:

Year Built	2005
Lot Acres	20
Lot Dimensions	660 x 1335
School District	22
Taxes	\$1,182
Taxes with Assessments	\$1,182
Tax Year	2025

Additional Features:

Driving Directions:

From Detroit Lakes, go north on #21 (Richwood Road) 10 miles, then go west on #26 1 1/4 miles to #132, go north to the property on your left.



Listed By:
Counselor Realty Detroit Lakes

Affinity Real Estate Inc. participates in the Regional Multiple Listing Service of Minnesota, Inc Broker Reciprocity (sm) program, allowing us to display other broker's listings on our website. All properties are subject to prior sale, change or withdrawal.



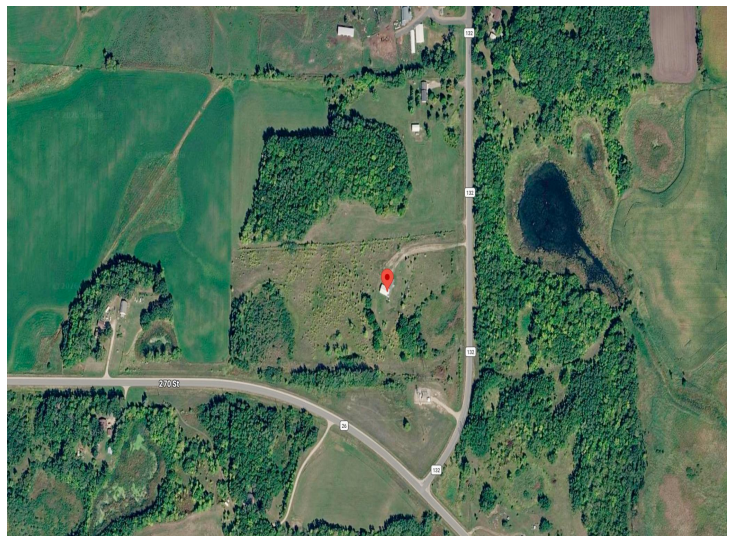
Call Affinity Real Estate

218-237-3333

info@affinityrealestate.com



Affinity Real Estate - 600 Park Avenue South - Park Rapids MN 56470



website: www.AffinityRealEstate.com | email: info@affinityrealestate.com | office: 218-237-3333 | fax:218-237-3377



\$185,000
MLS 7068062 Land
27100 County Road 132
Detroit Lakes MN 56501

website: www.AffinityRealEstate.com | email: info@affinityrealestate.com | office: 218-237-3333 | fax:218-237-3377



\$185,000

MLS 7068062 Land
27100 County Road 132
Detroit Lakes MN 56501

website: www.AffinityRealEstate.com | email: info@affinityrealestate.com | office: 218-237-3333 | fax:218-237-3377



\$185,000

MLS 7068062 Land
27100 County Road 132
Detroit Lakes MN 56501

website: www.AffinityRealEstate.com | email: info@affinityrealestate.com | office: 218-237-3333 | fax:218-237-3377



\$185,000
MLS 7068062 Land
27100 County Road 132
Detroit Lakes MN 56501