



MLS 7068063 Residential

\$399,900

1,924 sq ft
4 bedrooms
3 baths

4882 Emily Road
Baxter MN 56425

Status: Active

Description:

Check out this recently built 4 Bedroom, 3 Bathroom home in an ideal Baxter location—just minutes from Whipple Beach, White Sand Lake, grocery stores, restaurants and more! This home features spacious living areas with a cozy fireplace, a sleek modern design, and high-end finishes throughout. Enjoy quartz countertops, stylish flooring, and a large primary suite with walk-in closet and private bath. Step outside to a private backyard with a beautiful paver patio—perfect for relaxing or entertaining. A rare Baxter find combining comfort, space, and location! Set up your private viewing today!

Additional Details:

Year Built	2022
Lot Acres	0.45
Lot Dimensions	215x100x180x105
Garage Stalls	3
School District	181
Taxes	\$3,433
Taxes with Assessments	\$3,458
Tax Year	2026

Additional Features:

Basement: None **Fuel:** Natural Gas **Garage:** 3 **Heat:** Forced Air, Fireplace(s) **Sewer:** City Sewer/Connected **Water:** City Water - In Street **Air Conditioning:** Central Air

Driving Directions:

From Intersection 371|210 go west on 210 to Memorywood Rd turn right, to Emily Rd turn left to property on the right.



Listed By:
RE/MAX Advantage Plus

Affinity Real Estate Inc. participates in the Regional Multiple Listing Service of Minnesota, Inc Broker Reciprocity (sm) program, allowing us to display other broker's listings on our website. All properties are subject to prior sale, change or withdrawal.



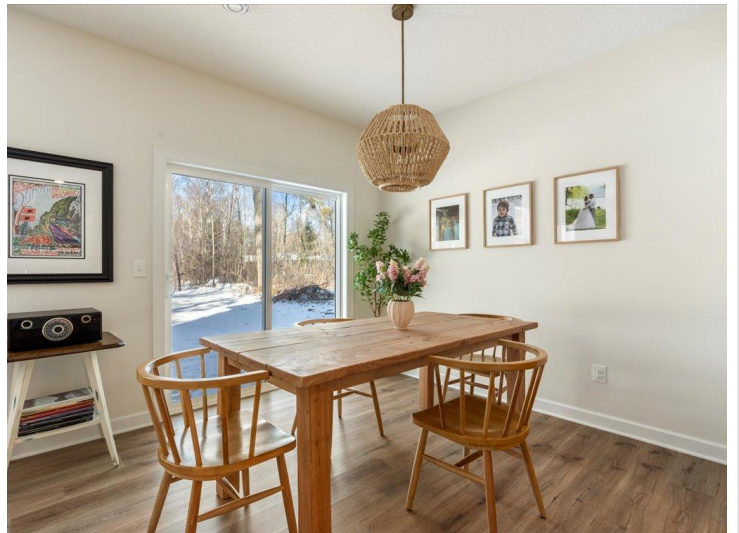
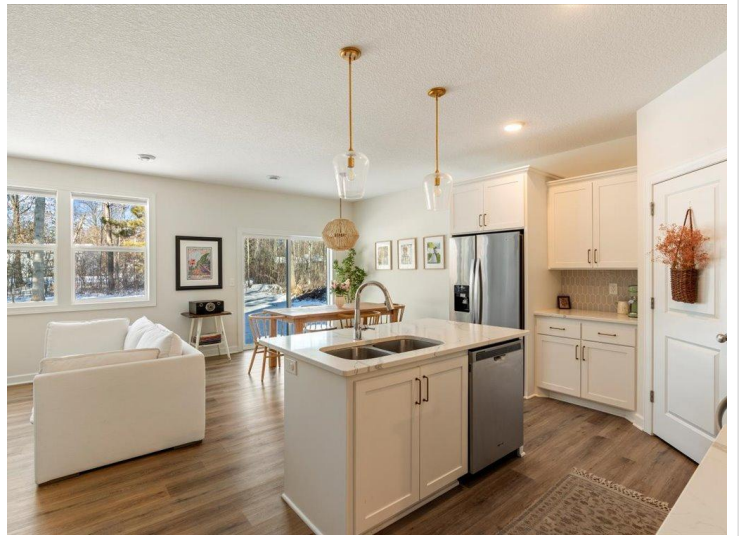
Call Affinity Real Estate

218-237-3333

info@affinityrealestate.com



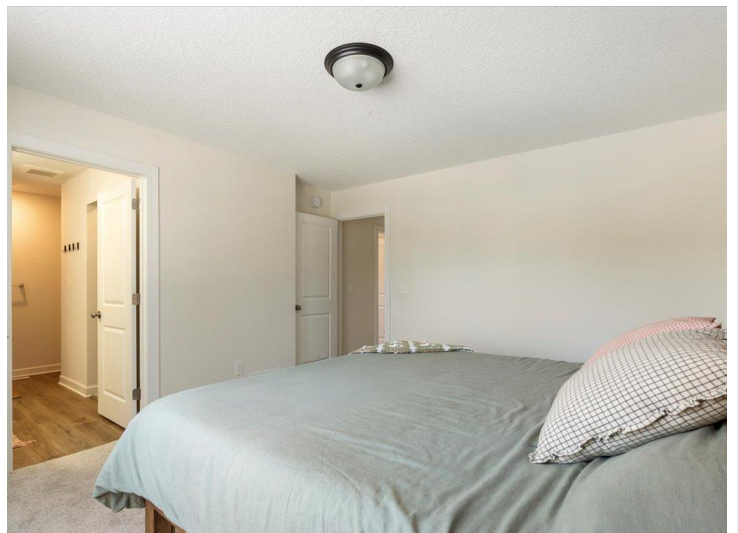
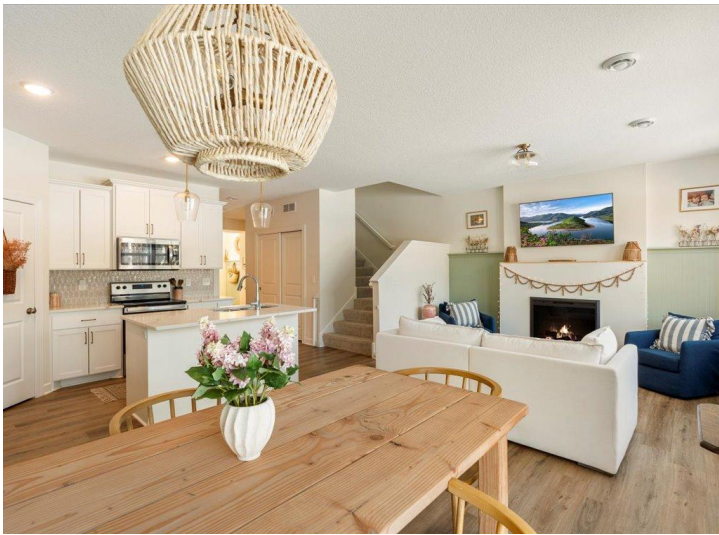
Affinity Real Estate - 600 Park Avenue South - Park Rapids MN 56470



website: www.AffinityRealEstate.com | email: info@affinityrealestate.com | office: 218-237-3333 | fax: 218-237-3377

Affinity
REAL ESTATE INC

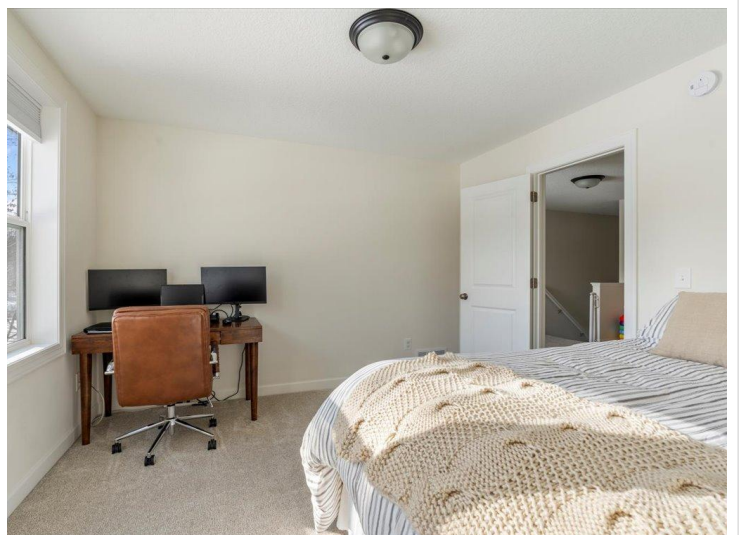
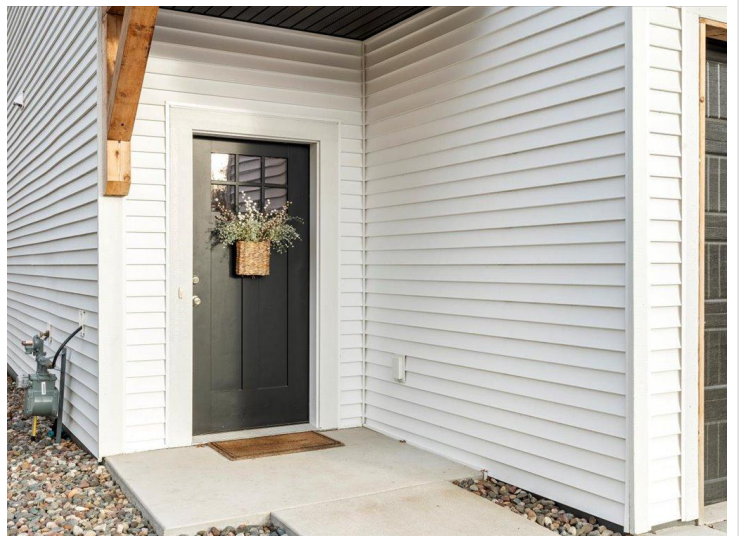
\$399,900
MLS 7068063 Residential
4882 Emily Road
Baxter MN 56425



website: www.AffinityRealEstate.com | email: info@affinityrealestate.com | office: 218-237-3333 | fax:218-237-3377

Affinity
REAL ESTATE INC

\$399,900
MLS 7068063 Residential
4882 Emily Road
Baxter MN 56425



website: www.AffinityRealEstate.com | email: info@affinityrealestate.com | office: 218-237-3333 | fax: 218-237-3377

Affinity
REAL ESTATE INC

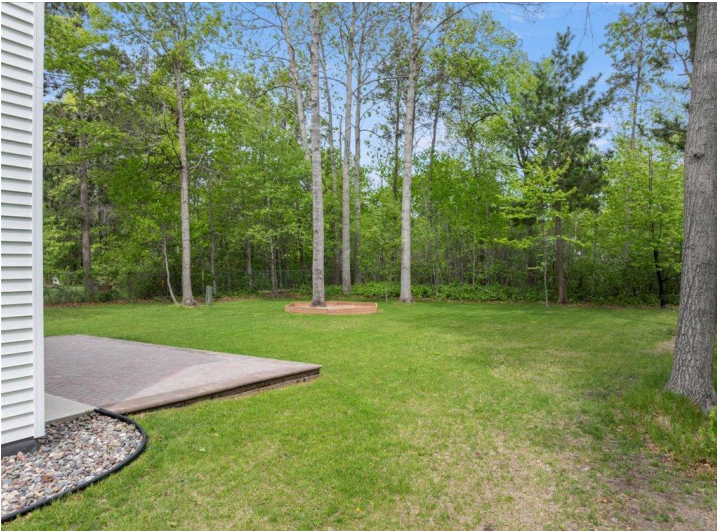
\$399,900
MLS 7068063 Residential
4882 Emily Road
Baxter MN 56425



website: www.AffinityRealEstate.com | email: info@affinityrealestate.com | office: 218-237-3333 | fax: 218-237-3377

Affinity
REAL ESTATE INC

\$399,900
MLS 7068063 Residential
4882 Emily Road
Baxter MN 56425



website: www.AffinityRealEstate.com | email: info@affinityrealestate.com | office: 218-237-3333 | fax:218-237-3377



\$399,900
MLS 7068063 Residential
4882 Emily Road
Baxter MN 56425



website: www.AffinityRealEstate.com | email: info@affinityrealestate.com | office: 218-237-3333 | fax:218-237-3377



\$399,900
MLS 7068063 Residential
4882 Emily Road
Baxter MN 56425