



MLS 7068163 Lake Home

\$99,900

532 sq ft
3 bedrooms
1 baths

8370 Sioux Trail
Motley MN 56466

Waterfront: Meadow

Status: Active

Description:

Escape to the outdoors with this one-of-a-kind storage container cabin retreat on 3.4 Acres! Nestled among mature trees, this unique property offers the perfect mix of rustic charm and modern comfort for year-round recreation and relaxation.

The thoughtfully designed cabin features 3 sleeping spaces, a functional kitchen, and a 3/4 bath complete with laundry. Step outside onto the spacious deck and unwind in the hot tub after a day of adventure. An additional storage container provides plenty of room for ATVs, snowmobiles, hunting gear, and outdoor equipment.

Located near ATV and snowmobile trails, plus extensive state and county land for hunting and recreation, this property is an outdoor enthusiast's dream. The property includes a drilled well and holding tank septic system for convenience and functionality.

Enjoy association amenities including access to a clubhouse, pool, beach, tennis courts, and much more — offering fun and relaxation for family and guests alike.


Whether you're looking for a weekend getaway, hunting basecamp, or unique Up North retreat, this property delivers adventure, comfort, and character all in one package!

Additional Details:

Year Built	2020
Lot Acres	3.4
Lot Dimensions	See aerial map
School District	2170
Taxes	\$464
Taxes with Assessments	\$550
Tax Year	2026

Additional Features:

Fuel: Electric, Propane **Heat:** Baseboard, Ductless Mini-Split, Space Heater

 Listed By:
Edina Realty, Inc.
Following to Real Estate Arrow Road SW to the right on Mt. Black Bear Drive SW to the right on Sioux Trail SW to the property on left (suggest us for more info) Minnesota, Inc Broker Reciprocity (sm) program, allowing us to display other broker's listings on our website. All properties are subject to prior sale, change or withdrawal.

 **Call Affinity Real Estate**
218-237-3333
info@affinityrealestate.com

Affinity Real Estate - 600 Park Avenue South - Park Rapids MN 56470



website: www.AffinityRealEstate.com | email: info@affinityrealestate.com | office: 218-237-3333 | fax:218-237-3377



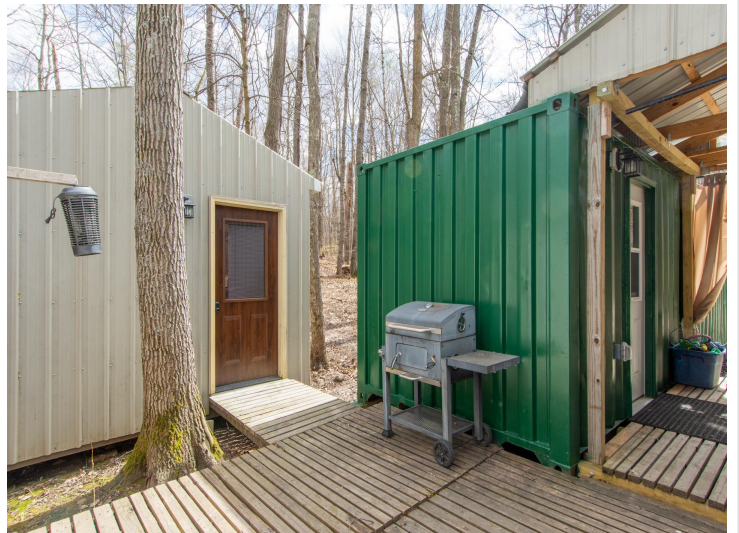
\$99,900
MLS 7068163 Lake Home
8370 Sioux Trail
Motley MN 56466



website: www.AffinityRealEstate.com | email: info@affinityrealestate.com | office: 218-237-3333 | fax:218-237-3377

Affinity
REAL ESTATE INC

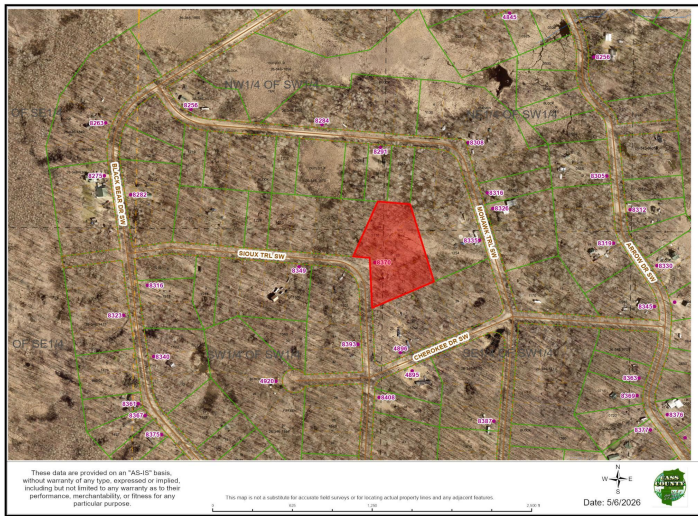
\$99,900
MLS 7068163 Lake Home
8370 Sioux Trail
Motley MN 56466



website: www.AffinityRealEstate.com | email: info@affinityrealestate.com | office: 218-237-3333 | fax: 218-237-3377

Affinity
REAL ESTATE INC

\$99,900
MLS 7068163 Lake Home
8370 Sioux Trail
Motley MN 56466



website: www.AffinityRealEstate.com | email: info@affinityrealestate.com | office: 218-237-3333 | fax: 218-237-3377



\$99,900
 MLS 7068163 Lake Home
 8370 Sioux Trail
 Motley MN 56466



website: www.AffinityRealEstate.com | email: info@affinityrealestate.com | office: 218-237-3333 | fax: 218-237-3377

Affinity
REAL ESTATE INC

\$99,900
MLS 7068163 Lake Home
8370 Sioux Trail
Motley MN 56466



website: www.AffinityRealEstate.com | email: info@affinityrealestate.com | office: 218-237-3333 | fax:218-237-3377

Affinity
REAL ESTATE INC

\$99,900
MLS 7068163 Lake Home
8370 Sioux Trail
Motley MN 56466



website: www.AffinityRealEstate.com | email: info@affinityrealestate.com | office: 218-237-3333 | fax:218-237-3377



\$99,900
MLS 7068163 Lake Home
8370 Sioux Trail
Motley MN 56466



website: www.AffinityRealEstate.com | email: info@affinityrealestate.com | office: 218-237-3333 | fax:218-237-3377



\$99,900
MLS 7068163 Lake Home
8370 Sioux Trail
Motley MN 56466