



MLS 7068215 Land

**\$65,000**

1.65 Acres  
Subdivided

TBD Lampi Road  
Cohasset MN 55721

Status: Active

**Description:**

Very nice 1.65 acre building lot. New survey in hand, and site is marked. Located near Pokegama Lake, Tioga Recreation area, and biking / walking trails. All level elevation ready for your home or storage building.

**Additional Details:**

Lot Acres	1.65
Lot Dimensions	IRR
School District	318
Taxes	\$1
Taxes with Assessments	\$1
Tax Year	2025

**Additional Features:**

**Driving Directions:**

Hwy 2 W, to left on CR 63, to left on Tioga Beach Rd, to left on Henderson Rd, straight onto Lampi Rd, to 23158 Lampi Rd



Listed By:  
EDGE OF THE WILDERNESS REALTY

Affinity Real Estate Inc. participates in the Regional Multiple Listing Service of Minnesota, Inc Broker Reciprocity (sm) program, allowing us to display other broker's listings on our website. All properties are subject to prior sale, change or withdrawal.



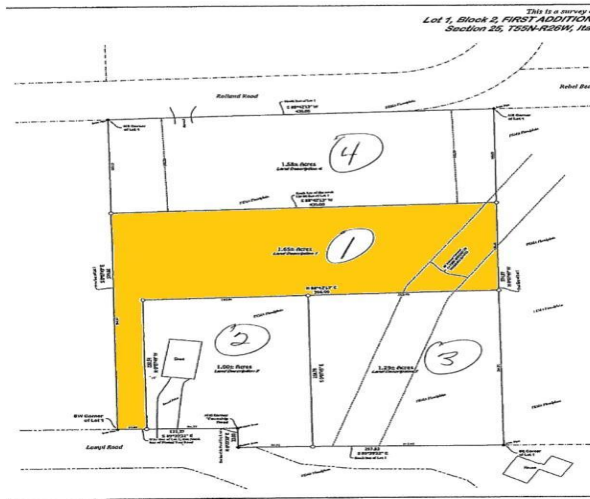
Call Affinity Real Estate

**218-237-3333**

[info@affinityrealestate.com](mailto:info@affinityrealestate.com)



Affinity Real Estate - 600 Park Avenue South - Park Rapids MN 56470



website: [www.AffinityRealEstate.com](http://www.AffinityRealEstate.com) | email: [info@affinityrealestate.com](mailto:info@affinityrealestate.com) | office: 218-237-3333 | fax: 218-237-3377



**\$65,000**  
 MLS 7068215 Land  
 TBD Lampi Road  
 Cohasset MN 55721