



MLS 7068229 Land

**\$54,900**

2.83 Acres  
Raw Land

TBD Bird Lake Road  
Osakis MN 56360

Status: Active

**Description:**

Just under 3 acres of open land ready for you to make your own! Lot's of possibilities here to build you dream home and have space for a garden, large garage, and much more! Lake Osakis is just down the road and downtown Alexandria is a short drive away. Come see for yourself and schedule your private showing today!

**Additional Details:**

Lot Acres	2.83
Lot Dimensions	Irregular
School District	213
Taxes	\$210
Taxes with Assessments	\$210
Tax Year	2025

**Additional Features:**

**Driving Directions:**

Heading North on County Rd 10 NE take a left onto Bird Lake Road NE. Property will be on your right hand side with for sale sign by road.



Listed By:  
DRG

Affinity Real Estate Inc. participates in the Regional Multiple Listing Service of Minnesota, Inc Broker Reciprocity (sm) program, allowing us to display other broker's listings on our website. All properties are subject to prior sale, change or withdrawal.



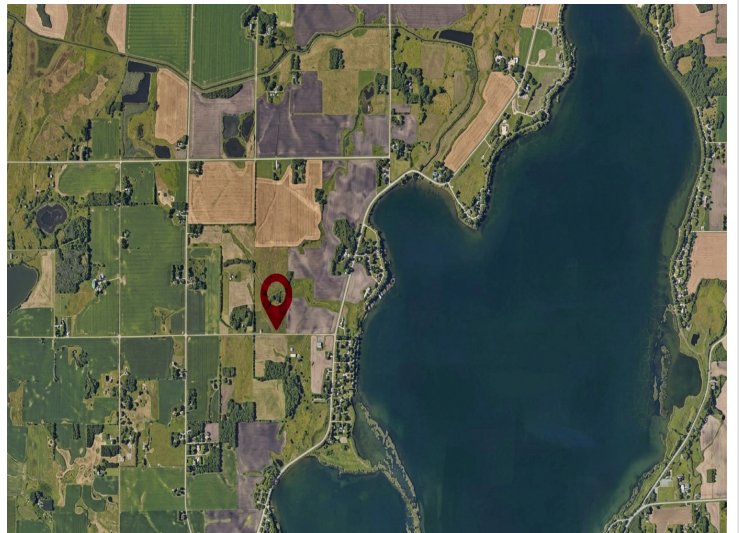
Call Affinity Real Estate

**218-237-3333**

[info@affinityrealestate.com](mailto:info@affinityrealestate.com)



Affinity Real Estate - 600 Park Avenue South - Park Rapids MN 56470



website: [www.AffinityRealEstate.com](http://www.AffinityRealEstate.com) | email: [info@affinityrealestate.com](mailto:info@affinityrealestate.com) | office: 218-237-3333 | fax:218-237-3377

**Affinity**  
REAL ESTATE INC

**\$54,900**  
MLS 7068229 Land  
TBD Bird Lake Road  
Osakis MN 56360



website: [www.AffinityRealEstate.com](http://www.AffinityRealEstate.com) | email: [info@affinityrealestate.com](mailto:info@affinityrealestate.com) | office: 218-237-3333 | fax:218-237-3377

**Affinity**  
REAL ESTATE INC

**\$54,900**  
MLS 7068229 Land  
TBD Bird Lake Road  
Osakis MN 56360