



MLS 7068233 Commercial

\$650,000

23889 Co Hwy 1
Fergus Falls MN 56537

Status: Active

Description:

Check out this very versatile property. Currently operating as machining business. Over 5,000 square ft of finished steel building with office, break room, and 3/4 bath. In-floor heat in East side of the building. East 1/2 of building was completed in 2007 and West 1/2 in 2020. 2-12ft overhead doors, 3 entry doors and 14ft ceilings in main area of shop. Very uniform design throughout. 3-phase electrical system. Located under 2 miles from the edge of Fergus Falls on 23.88 acres with 17 of those acres tillable and 3 acres pasture. With this much land available along with the warehouse/business structure, your options are many. Potential development of land, start a business with production of food, or create your own hobby farm. These are just some ideas to check out. There is a farmhouse from 1910 that has been being remodeled. The outside has been updated with siding, doors and windows. The inside has been taken down to the studs with a visible partitioned layout. Double detached garage with same siding as house. Lots to talk about with this property and questions are welcome for more understanding of property.

Additional Details:

Year Built	2007
Lot Acres	23.88
Lot Dimensions	Irregular
Garage Stalls	2
School District	544
Taxes	\$3,246
Taxes with Assessments	\$3,442
Tax Year	2026

Additional Features:

Fuel: Electric **Garage:** 2 **Heat:** In-Floor Heating **Sewer:** Private Sewer, Tank with Drainage Field **Water:** 4-Inch Submersible **Air Conditioning:** None

Driving Directions:

County Hwy 1 NE of Fergus Falls about 2 miles



Listed By:
Century 21 Atwood

Affinity Real Estate Inc. participates in the Regional Multiple Listing Service of Minnesota, Inc Broker Reciprocity (sm) program, allowing us to display other broker's listings on our website. All properties are subject to prior sale, change or withdrawal.



Call Affinity Real Estate

218-237-3333

info@affinityrealestate.com



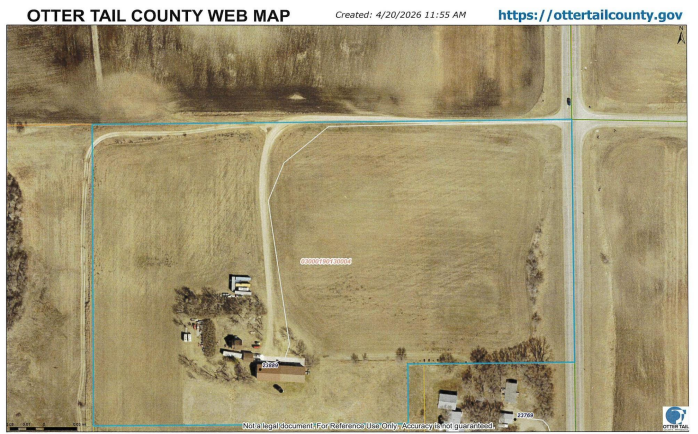
Affinity Real Estate - 600 Park Avenue South - Park Rapids MN 56470



website: www.AffinityRealEstate.com | email: info@affinityrealestate.com | office: 218-237-3333 | fax:218-237-3377



\$650,000
MLS 7068233 Commercial
23889 Co Hwy 1
Fergus Falls MN 56537



website: www.AffinityRealEstate.com | email: info@affinityrealestate.com | office: 218-237-3333 | fax:218-237-3377



\$650,000
MLS 7068233 Commercial
23889 Co Hwy 1
Fergus Falls MN 56537



website: www.AffinityRealEstate.com | email: info@affinityrealestate.com | office: 218-237-3333 | fax:218-237-3377



\$650,000
MLS 7068233 Commercial
23889 Co Hwy 1
Fergus Falls MN 56537



website: www.AffinityRealEstate.com | email: info@affinityrealestate.com | office: 218-237-3333 | fax:218-237-3377



\$650,000
MLS 7068233 Commercial
23889 Co Hwy 1
Fergus Falls MN 56537



website: www.AffinityRealEstate.com | email: info@affinityrealestate.com | office: 218-237-3333 | fax:218-237-3377



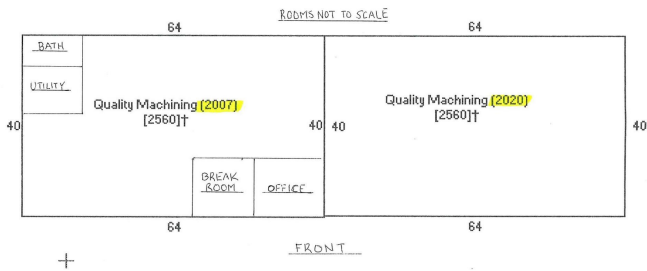
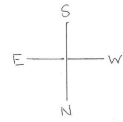
\$650,000
MLS 7068233 Commercial
23889 Co Hwy 1
Fergus Falls MN 56537



website: www.AffinityRealEstate.com | email: info@affinityrealestate.com | office: 218-237-3333 | fax:218-237-3377



\$650,000
MLS 7068233 Commercial
23889 Co Hwy 1
Fergus Falls MN 56537



website: www.AffinityRealEstate.com | email: info@affinityrealestate.com | office: 218-237-3333 | fax: 218-237-3377



\$650,000
MLS 7068233 Commercial
23889 Co Hwy 1
Fergus Falls MN 56537