



MLS 7068255 Lake Home

\$959,000

2,024 sq ft
5 bedrooms
3 baths

14292 Chippewa Loop
Park Rapids MN 56470

Waterfront: Long Lake (29016100)

Status: Coming Soon

Description:

Looking for the perfect escape? This special property is loaded with features and is located on Park Rapids' prestigious Long Lake. Be sure to check out the video. Full details to follow soon.

Additional Details:

Year Built	1966
Lot Acres	0.44
Lot Dimensions	51 x 380
Garage Stalls	2
School District	309
Taxes	\$3,716
Taxes with Assessments	\$4,206
Tax Year	2026

Additional Features:

Fuel: Propane **Heat:** Forced Air, Fireplace(s)

Driving Directions:

From CR 6 @ Hwy 34: Go South on CR 6 to a left on Chippewa Loop. Proceed to 14292. The lake cabin sits on the left side of road and the garage with living quarters sits on the right.



Listed By:
Affinity Real Estate Inc.

Affinity Real Estate Inc. participates in the Regional Multiple Listing Service of Minnesota, Inc Broker Reciprocity (sm) program, allowing us to display other broker's listings on our website. All properties are subject to prior sale, change or withdrawal.



Call Affinity Real Estate

218-237-3333

info@affinityrealestate.com



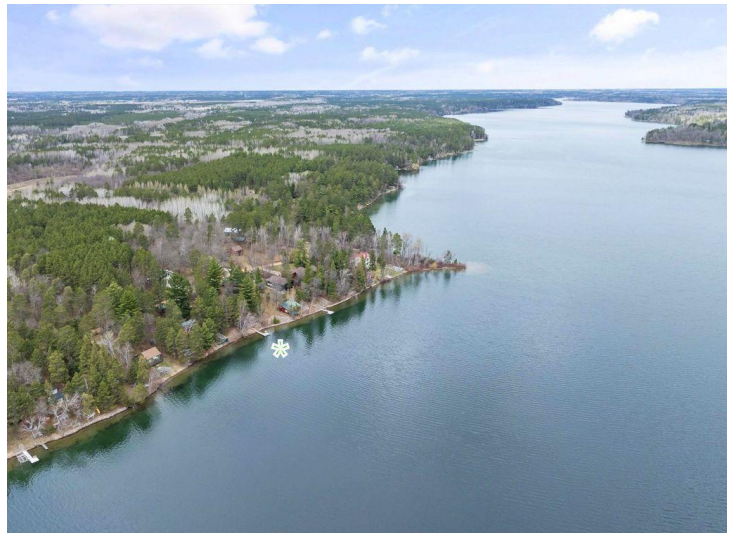
Affinity Real Estate - 600 Park Avenue South - Park Rapids MN 56470



website: www.AffinityRealEstate.com | email: info@affinityrealestate.com | office: 218-237-3333 | fax:218-237-3377

Affinity
REAL ESTATE INC

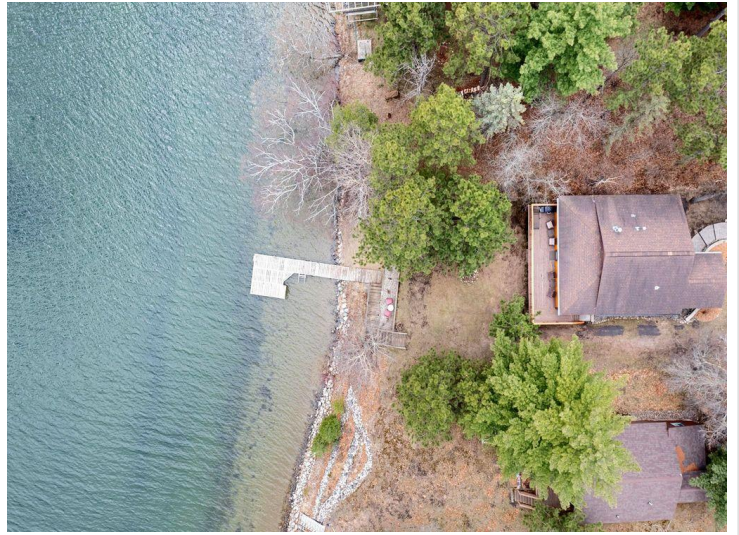
\$959,000
MLS 7068255 Lake Home
14292 Chippewa Loop
Park Rapids MN 56470



website: www.AffinityRealEstate.com | email: info@affinityrealestate.com | office: 218-237-3333 | fax:218-237-3377



\$959,000
MLS 7068255 Lake Home
14292 Chippewa Loop
Park Rapids MN 56470



website: www.AffinityRealEstate.com | email: info@affinityrealestate.com | office: 218-237-3333 | fax:218-237-3377



\$959,000
MLS 7068255 Lake Home
14292 Chippewa Loop
Park Rapids MN 56470



website: www.AffinityRealEstate.com | email: info@affinityrealestate.com | office: 218-237-3333 | fax: 218-237-3377

Affinity
REAL ESTATE INC

\$959,000
MLS 7068255 Lake Home
14292 Chippewa Loop
Park Rapids MN 56470



website: www.AffinityRealEstate.com | email: info@affinityrealestate.com | office: 218-237-3333 | fax: 218-237-3377

Affinity
REAL ESTATE INC

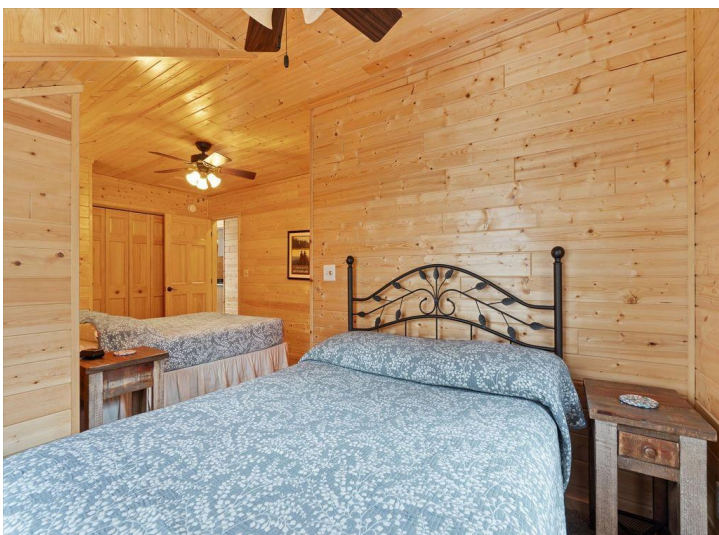
\$959,000
MLS 7068255 Lake Home
14292 Chippewa Loop
Park Rapids MN 56470



website: www.AffinityRealEstate.com | email: info@affinityrealestate.com | office: 218-237-3333 | fax: 218-237-3377

Affinity
REAL ESTATE INC

\$959,000
MLS 7068255 Lake Home
14292 Chippewa Loop
Park Rapids MN 56470



website: www.AffinityRealEstate.com | email: info@affinityrealestate.com | office: 218-237-3333 | fax: 218-237-3377

Affinity
REAL ESTATE INC

\$959,000
MLS 7068255 Lake Home
14292 Chippewa Loop
Park Rapids MN 56470



website: www.AffinityRealEstate.com | email: info@affinityrealestate.com | office: 218-237-3333 | fax:218-237-3377

Affinity
REAL ESTATE INC

\$959,000
MLS 7068255 Lake Home
14292 Chippewa Loop
Park Rapids MN 56470