



MLS 7068270 Lake Land

**\$590,000**

**Description:**

Townline Lake / Acreage – Lions and tigers and bears, oh my! I mean bears and whitetail and turkey and ducks and fishing, oh my! 88 acres (2 PID 19-003-2001 and 19-003-3100) of woodlands embrace over 3,500’ of sprawling lakeshore with stretches of sand bottom. A 36’ x 48’ metal pole building was built in 2020 with concrete floor for all of your outdoor equipment storage. 4 miles of mowed trails lead to 5 permanent deer stands (4 raised and 1 ground blind), 3 permanent duck blinds, a centrally located ¼ acre food plot, 5 young apple trees and abundant raspberry patches. This one-of-a-kind property rarely surfaces. Development potential abounds (like the wildlife!)

**Additional Details:**

Lot Acres	88.34
Lot Dimensions	3579x1930x700x1520x2905
School District	118
Taxes	\$1,978
Taxes with Assessments	\$1,978
Tax Year	2026

**Additional Features:**

**Driving Directions:**

FROM LONGVILLE GO NORTH ON #84 6 MILES, CROSS HIGHWAY 200 AND CONTINUE NORTH ON COUNTY 8 NE FOR ½ MILE. THERE ARE TWO SEPERATE ENTRANCES TO THE PROPERTY ON THE RIGHT AT #6920 AND DIRECTLY TO THE SOUTH AT THE GATE.



Listed By:  
Heartland Real Estate

Affinity Real Estate Inc. participates in the Regional Multiple Listing Service of Minnesota, Inc Broker Reciprocity (sm) program, allowing us to display other broker’s listings on our website. All properties are subject to prior sale, change or withdrawal.



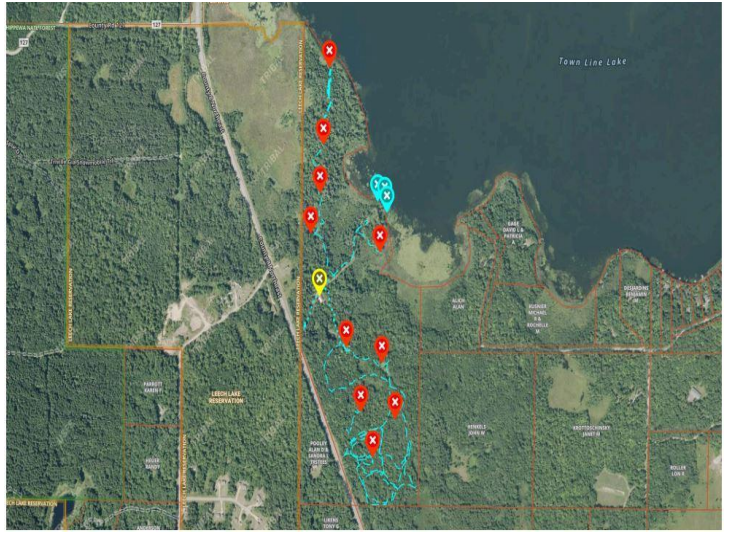
**Call Affinity Real Estate**

**218-237-3333**

**info@affinityrealestate.com**



**Affinity Real Estate - 600 Park Avenue South - Park Rapids MN 56470**



website: [www.AffinityRealEstate.com](http://www.AffinityRealEstate.com) | email: [info@affinityrealestate.com](mailto:info@affinityrealestate.com) | office: 218-237-3333 | fax:218-237-3377



**\$590,000**  
MLS 7068270 Lake Land  
6920 County Road 8  
Longville MN 56655



website: [www.AffinityRealEstate.com](http://www.AffinityRealEstate.com) | email: [info@affinityrealestate.com](mailto:info@affinityrealestate.com) | office: 218-237-3333 | fax:218-237-3377



**\$590,000**  
MLS 7068270 Lake Land  
6920 County Road 8  
Longville MN 56655



website: [www.AffinityRealEstate.com](http://www.AffinityRealEstate.com) | email: [info@affinityrealestate.com](mailto:info@affinityrealestate.com) | office: 218-237-3333 | fax:218-237-3377



**\$590,000**  
MLS 7068270 Lake Land  
6920 County Road 8  
Longville MN 56655



website: [www.AffinityRealEstate.com](http://www.AffinityRealEstate.com) | email: [info@affinityrealestate.com](mailto:info@affinityrealestate.com) | office: 218-237-3333 | fax:218-237-3377



**\$590,000**  
MLS 7068270 Lake Land  
6920 County Road 8  
Longville MN 56655

