



MLS 7068307 Lake Home

**\$179,900**

585 sq ft  
1 bedrooms  
1 baths

15827 Wilderness Trail  
Crosslake MN 56442

Waterfront: Little Pine Lake  
(Crosslake City)

Status: Active

**Description:**

Enjoy carefree lake living at its finest in this immaculate, exceptionally well cared for unit located in the 2nd row at Wilderness Park on Little Pine Lake, part of the sought after WHITEFISH CHAIN. Pride of ownership shines throughout, and this spotless unit is being offered furnished and ready for you to start making memories immediately.

With room to comfortably sleep 12, the oversized loft features 3 queen beds and provides plenty of space for family and guests. The unit offers vaulted ceilings, numerous updates throughout, double awnings, a boat slip just steps away, a 12x30 garage, and an additional storage shed.

Wilderness Park offers an unmatched lineup of amenities including a private boat launch, fish cleaning house, new pickleball and tennis courts, volleyball, basketball, horseshoes, car and boat wash station, storm shelter, onsite laundry, heated in ground pool, playground, and swimming beach.

Whether you're looking for a summer retreat, a place to entertain, or an easy way to enjoy everything the Whitefish Chain has to offer, this property checks all the boxes. Don't miss your opportunity to own this move in ready unit and get ready to enjoy summer in beautiful Crosslake!

**Additional Details:**

Year Built	2000
Garage Stalls	1
School District	186
Taxes	\$105
Taxes with Assessments	\$135
Tax Year	2025

**Additional Features:**

**Fuel:** Propane **Heat:** Forced Air

**Driving Directions:**

From County Road 66 in Crosslake go East on Daggett Pine Rd go right at the Community Center. Left on Wilderness Trail, take to end of Park Blvd. Take a right at stop sign follow to boat launch on left.



Affinity Real Estate Inc. participates in the Regional Multiple Listing Service of Minnesota, Inc Broker Reciprocity (sm) program, allowing us to display other broker's listings on our website. All properties are subject to prior sale, change or withdrawal.



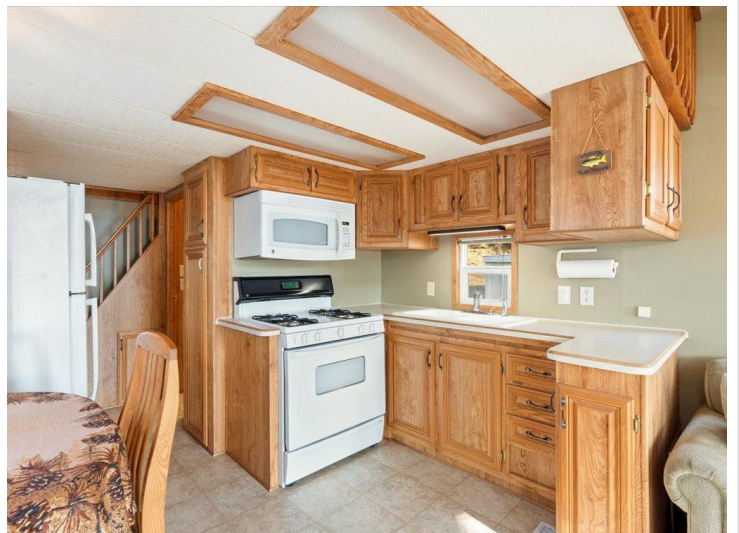
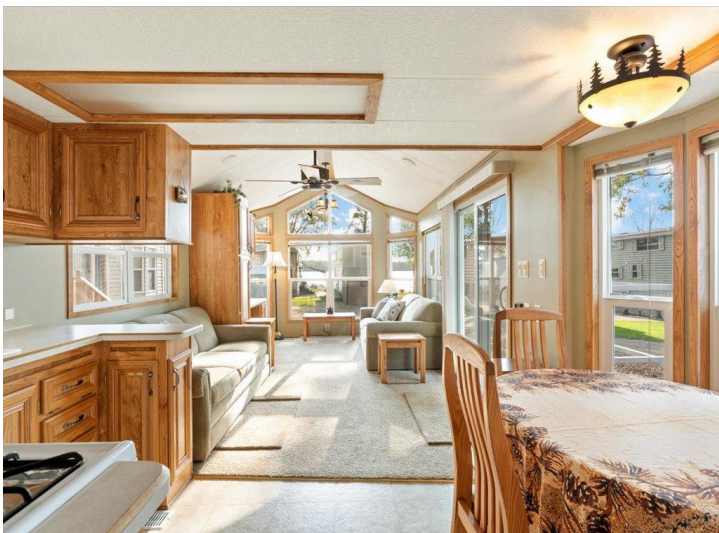
Call Affinity Real Estate

**218-237-3333**

[info@affinityrealestate.com](mailto:info@affinityrealestate.com)



Affinity Real Estate - 600 Park Avenue South - Park Rapids MN 56470



website: [www.AffinityRealEstate.com](http://www.AffinityRealEstate.com) | email: [info@affinityrealestate.com](mailto:info@affinityrealestate.com) | office: 218-237-3333 | fax: 218-237-3377

**Affinity**  
REAL ESTATE INC

**\$179,900**  
MLS 7068307 Lake Home  
15827 Wilderness Trail  
Crosslake MN 56442



website: [www.AffinityRealEstate.com](http://www.AffinityRealEstate.com) | email: [info@affinityrealestate.com](mailto:info@affinityrealestate.com) | office: 218-237-3333 | fax: 218-237-3377

**Affinity**  
REAL ESTATE INC

**\$179,900**  
MLS 7068307 Lake Home  
15827 Wilderness Trail  
Crosslake MN 56442



website: [www.AffinityRealEstate.com](http://www.AffinityRealEstate.com) | email: [info@affinityrealestate.com](mailto:info@affinityrealestate.com) | office: 218-237-3333 | fax:218-237-3377

**Affinity**  
REAL ESTATE INC

**\$179,900**  
MLS 7068307 Lake Home  
15827 Wilderness Trail  
Crosslake MN 56442



website: [www.AffinityRealEstate.com](http://www.AffinityRealEstate.com) | email: [info@affinityrealestate.com](mailto:info@affinityrealestate.com) | office: 218-237-3333 | fax:218-237-3377

**Affinity**  
REAL ESTATE INC

**\$179,900**  
MLS 7068307 Lake Home  
15827 Wilderness Trail  
Crosslake MN 56442



website: [www.AffinityRealEstate.com](http://www.AffinityRealEstate.com) | email: [info@affinityrealestate.com](mailto:info@affinityrealestate.com) | office: 218-237-3333 | fax:218-237-3377



**\$179,900**  
MLS 7068307 Lake Home  
15827 Wilderness Trail  
Crosslake MN 56442



website: [www.AffinityRealEstate.com](http://www.AffinityRealEstate.com) | email: [info@affinityrealestate.com](mailto:info@affinityrealestate.com) | office: 218-237-3333 | fax:218-237-3377

**Affinity**  
REAL ESTATE INC

**\$179,900**  
MLS 7068307 Lake Home  
15827 Wilderness Trail  
Crosslake MN 56442