



MLS 7068318 Lake Home

**\$425,000**

2,574 sq ft  
3 bedrooms  
2 baths

12779 Executive Acres Road  
Brainerd MN 56401

Waterfront: Mississippi River

Status: Active

**Description:**

Nestled along the scenic Mississippi River, this 3-bedroom, 2-bathroom home offers a rare opportunity to enjoy peaceful waterfront living with incredible views and direct river access. The main level features a river-facing living room and dining area with vaulted ceilings, creating a bright and open feel, along with a cozy brick wood-burning fireplace. The kitchen is equipped with stainless steel appliances and a large picture window that perfectly frames the river.

A main-level bedroom and bathroom provide convenient one-level living, while the upper level offers two additional bedrooms and an updated bathroom. The primary bedroom features a private balcony overlooking the river—an ideal spot to take in the serene surroundings.

The lower level expands the living space with a family room complete with a gas-burning fireplace, wet bar, office, utility room, and a 3-season porch for added relaxation and entertaining space.

Additional highlights include a 2-stall attached garage, deck, and beautiful riverfront setting. This property is being offered as a short sale and is subject to lender approval—an excellent opportunity to build equity and make this waterfront home your own.

**Additional Details:**

Year Built	1977
Lot Acres	0.66
Lot Dimensions	99.95x263
Garage Stalls	2
School District	181
Taxes	\$2,151
Taxes with Assessments	\$2,176
Tax Year	2026

**Additional Features:**

**Basement:** Daylight/Lookout Windows, Partially Finished, Storage Space, Walkout **Fuel:** Electric, Natural Gas, Wood **Garage:** 2 **Heat:** Baseboard, Forced Air **Stairs:** Carpet, Staircase, Drilled, Private, Well **Air Conditioning:** Central, Split, Window **Call Affinity Real Estate**  
**Sewer:** Private Sewer, Tank with Drainage Field **Water:** City, Well, Cistern, Drilled, Private, Well **Air Conditioning:** Central, Split, Window  
 Listed By: **Realty ONE Group Choice**

**Driving Directions:**

Affinity Real Estate Inc. participates in the Regional Multiple Listing Service of Minnesota, 210 Park Rapids Ave NE, Room 4, Brainerd, MN 56401. We do not discriminate in housing on the basis of race, sex, or ethnicity. We do not allow our agents to display other broker's listings on our website. All properties are subject to prior sale, change or withdrawal.



**218-237-3333**  
**info@affinityrealestate.com**



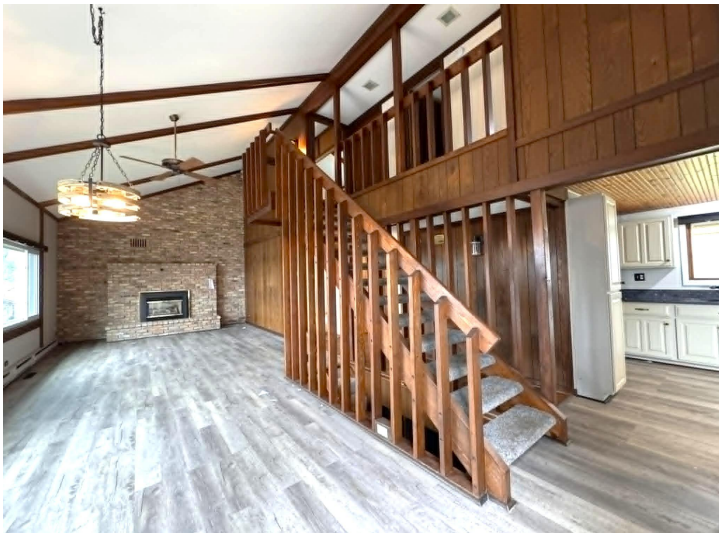
**Affinity Real Estate - 600 Park Avenue South - Park Rapids MN 56470**



website: [www.AffinityRealEstate.com](http://www.AffinityRealEstate.com) | email: [info@affinityrealestate.com](mailto:info@affinityrealestate.com) | office: 218-237-3333 | fax:218-237-3377



**\$425,000**  
MLS 7068318 Lake Home  
12779 Executive Acres Road  
Brainerd MN 56401



website: [www.AffinityRealEstate.com](http://www.AffinityRealEstate.com) | email: [info@affinityrealestate.com](mailto:info@affinityrealestate.com) | office: 218-237-3333 | fax:218-237-3377

**Affinity**  
REAL ESTATE INC

**\$425,000**  
MLS 7068318 Lake Home  
12779 Executive Acres Road  
Brainerd MN 56401



website: [www.AffinityRealEstate.com](http://www.AffinityRealEstate.com) | email: [info@affinityrealestate.com](mailto:info@affinityrealestate.com) | office: 218-237-3333 | fax:218-237-3377

**Affinity**  
REAL ESTATE INC

**\$425,000**  
MLS 7068318 Lake Home  
12779 Executive Acres Road  
Brainerd MN 56401



website: [www.AffinityRealEstate.com](http://www.AffinityRealEstate.com) | email: [info@affinityrealestate.com](mailto:info@affinityrealestate.com) | office: 218-237-3333 | fax:218-237-3377

**Affinity**  
REAL ESTATE INC

**\$425,000**  
MLS 7068318 Lake Home  
12779 Executive Acres Road  
Brainerd MN 56401



website: [www.AffinityRealEstate.com](http://www.AffinityRealEstate.com) | email: [info@affinityrealestate.com](mailto:info@affinityrealestate.com) | office: 218-237-3333 | fax:218-237-3377



**\$425,000**  
MLS 7068318 Lake Home  
12779 Executive Acres Road  
Brainerd MN 56401