



MLS 7068451 Lake Home

**\$225,000**

515 sq ft  
1 bedrooms  
1 baths

15827 Wilderness Trail  
Crosslake MN 56442

Waterfront: Little Pine Lake  
(Crosslake City)

Status: Coming Soon

**Description:**

Enjoy easy lake living in this modern park model located in Wilderness Park on Little Pine Lake, part of the beautiful WHITEFISH CHAIN. Situated on a beautifully landscaped lot with a spacious patio, this fully furnished unit is move in ready and offers the perfect place to relax and unwind.

With room to comfortably sleep 8, this property features 1 bedroom, 1 bathroom, a loft area for additional guests, shared dock access, and a garage for extra storage. Whether you're looking for a weekend escape or a seasonal retreat, this is an affordable way to enjoy the lake lifestyle.

Wilderness Park amenities include tennis courts, heated outdoor pool, showers, and more, all conveniently located near Crosslake's restaurants, shopping, golf, and entertainment.

Spend your days on the water, your evenings around the patio, and enjoy all the fun and relaxation the Crosslake area has to offer.

**Additional Details:**

|                        |        |
|------------------------|--------|
| Year Built             | 2018   |
| Lot Acres              | 51     |
| Lot Dimensions         | 30x100 |
| Garage Stalls          | 1      |
| School District        | 186    |
| Taxes                  | \$224  |
| Taxes with Assessments | \$224  |
| Tax Year               | 2025   |

**Additional Features:**

**Basement:** None **Fuel:** Propane **Garage:** 1 **Heat:** Forced Air, Fireplace(s) **Sewer:** Septic System Compliant - Yes, Shared Septic, Tank with Drainage Field **Water:** Drilled, Shared System, Well **Air Conditioning:** Central Air

**Driving Directions:**

Head E on Hwy 101 to right on Daggett Pine to left on Wilderness Park  
Dane Arthur Real Estate Agency-Crosslake

Affinity Real Estate Inc. participates in the Regional Multiple Listing Service of Minnesota, Inc Broker Reciprocity (sm) program, allowing us to display other broker's listings on our website. All properties are subject to prior sale, change or withdrawal.



**Call Affinity Real Estate**

**218-237-3333**

**info@affinityrealestate.com**



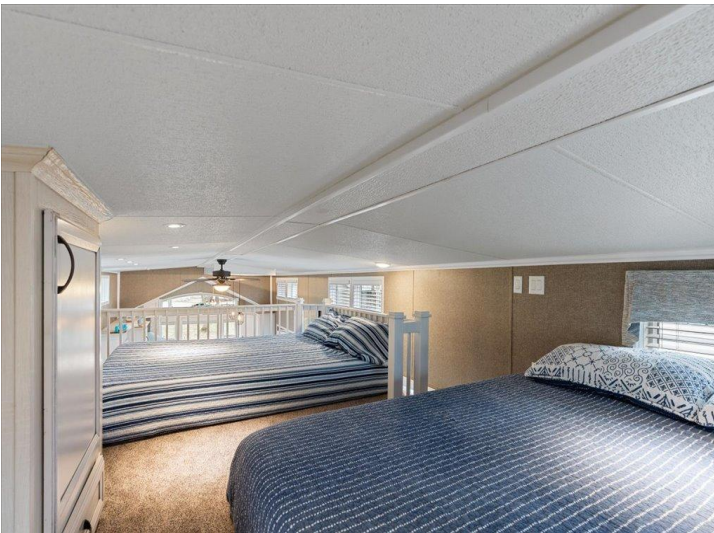
**Affinity Real Estate - 600 Park Avenue South - Park Rapids MN 56470**



website: [www.AffinityRealEstate.com](http://www.AffinityRealEstate.com) | email: [info@affinityrealestate.com](mailto:info@affinityrealestate.com) | office: 218-237-3333 | fax:218-237-3377



**\$225,000**  
MLS 7068451 Lake Home  
15827 Wilderness Trail  
Crosslake MN 56442



website: [www.AffinityRealEstate.com](http://www.AffinityRealEstate.com) | email: [info@affinityrealestate.com](mailto:info@affinityrealestate.com) | office: 218-237-3333 | fax: 218-237-3377

**Affinity**  
REAL ESTATE INC

**\$225,000**  
MLS 7068451 Lake Home  
15827 Wilderness Trail  
Crosslake MN 56442



website: [www.AffinityRealEstate.com](http://www.AffinityRealEstate.com) | email: [info@affinityrealestate.com](mailto:info@affinityrealestate.com) | office: 218-237-3333 | fax: 218-237-3377



**\$225,000**  
MLS 7068451 Lake Home  
15827 Wilderness Trail  
Crosslake MN 56442