



MLS 7068661 Residential

\$674,900

4,485 sq ft
5 bedrooms
4 baths

14750 Matson Road
Frazee MN 56544


Status: Active

Description:

NEW IN 2026 INCREDIBLE UPDATES IN EVERY ROOM (Please see Attachment A) "The Castle Home" Just Minutes from Detroit Lakes. Step into timeless character and exceptional living in this one-of-a-kind estate situated on 7 level, wooded acres just 3 miles from Hwy 10. This extraordinary two-story home spans over 4,700 sq ft and features 4 to 5 bedrooms, 3.5 baths, and offers the perfect blend of space, seclusion, and convenience. From the moment you enter the grand two-story foyer, you'll be welcomed by soaring vaulted ceilings, an abundance of natural light, expansive windows, and rich maple flooring throughout. At the heart of the home is a spacious kitchen with generous cabinetry, a pantry, stainless steel appliances, and sliding glass doors that lead to a 12' x 20' deck with pergola—ideal for entertaining or peaceful moments outdoors. The formal dining room flows seamlessly into a cozy, light-filled den, perfect for after dinner relaxation. The main level w/new LVP flooring also features a spacious office, laundry room, and multiple storage areas for practical everyday living. Upstairs, you'll find two bedrooms and a full bath, plus a truly royal master suite stretching over 800 sq ft. Enjoy a private sitting room with deck access, a spa-inspired ensuite with jetted tub, and a breathtaking glass-surrounded sleeping area where you can wake up to views of nature and serenity each morning. The full 2200sqft walkout basement offers incredible potential, with a finished bedroom (w/egress), full bath, 2nd set washer/dryer hookups, bonus rooms, utility room, and a large family room ready for your personal touch. This remarkable property has a three-stall attached garage and a 30' x 42' insulated shop—ideal for hobbies, projects, or extra storage. Don't miss this rare opportunity to make The Castle Home your kingdom. Schedule your private showing today and start living like royalty!

Additional Details:

Year Built	2003
Lot Acres	7
Lot Dimensions	30492 sqft
Garage Stalls	3
School District	22
Taxes	\$4,013
Taxes with Assessments	\$4,078
Tax Year	2025

Listed By:  Affinity Real Estate Company (Inc) in Frazee, MN
 Features: Hardwood Floors, Granite Countertops, Walkout Basement, Storage Space, Walkout, Wood Deck, Electric, Natural Gas, Garage: 3
 Heat: Baseboard, Forced Air Sewer: Private Sewer, Tank with Drainage Field, Walkout, Full Air Conditioning: Central Air
 Affinity Real Estate Inc. participates in the Regional Multiple Listing Service of Minnesota, Inc Broker Reciprocity (sm) program, allowing us to display other broker's listings on our website. All properties are subject to prior sale, change or withdrawal.
 From Hwy 10 East, turn onto City Hwy 54 approx 3 miles. Green home will be on the left.



Call Affinity Real Estate

218-237-3333 Garage: 3

info@affinityrealestate.com



Affinity Real Estate - 600 Park Avenue South - Park Rapids MN 56470



website: www.AffinityRealEstate.com | email: info@affinityrealestate.com | office: 218-237-3333 | fax: 218-237-3377

Affinity
REAL ESTATE INC

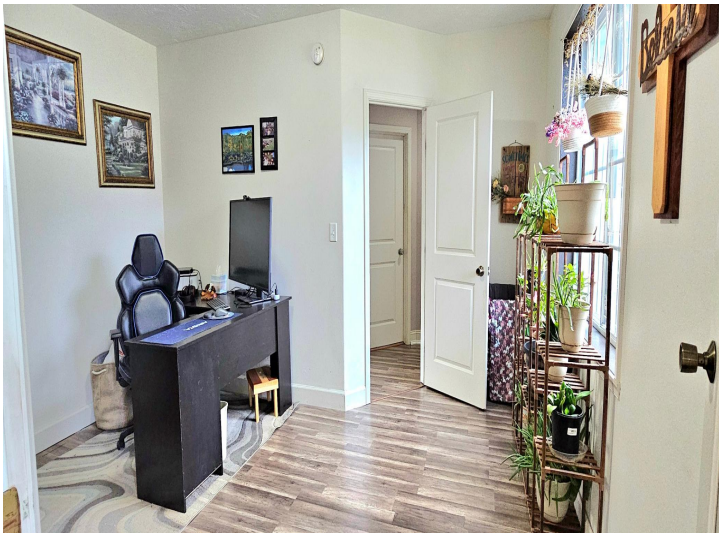
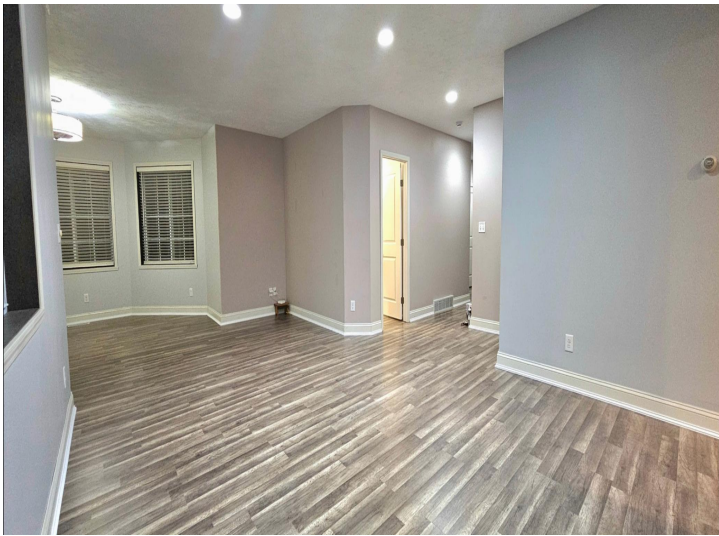
\$674,900
MLS 7068661 Residential
14750 Matson Road
Frazee MN 56544



website: www.AffinityRealEstate.com | email: info@affinityrealestate.com | office: 218-237-3333 | fax:218-237-3377

Affinity
REAL ESTATE INC

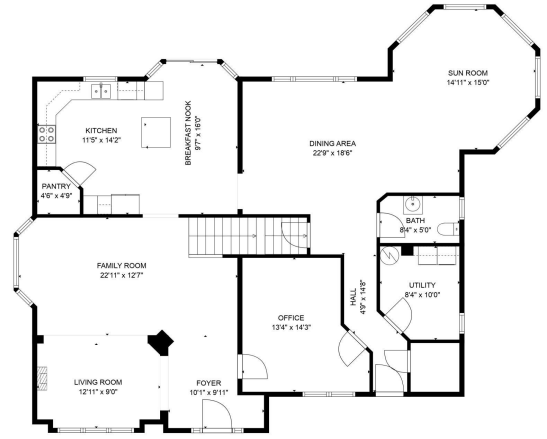
\$674,900
MLS 7068661 Residential
14750 Matson Road
Frazee MN 56544



website: www.AffinityRealEstate.com | email: info@affinityrealestate.com | office: 218-237-3333 | fax: 218-237-3377

Affinity
REAL ESTATE INC

\$674,900
MLS 7068661 Residential
14750 Matson Road
Frazee MN 56544



Total GLA: 3131 sq. ft. | Total: 4710 sq. ft.
 Floor 1: Below grade (Excluded area: 2379 sq. ft.)
 Floor 2: 5822 sq. ft.
 Floor 3: 1309 sq. ft. (Excluded area: 473 sq. ft.)
 FLOOR PLAN CREATED BY CUBICAGI APP. MEASUREMENTS DEEMED HIGHLY RELIABLE BUT NOT GUARANTEED.



website: www.AffinityRealEstate.com | email: info@affinityrealestate.com | office: 218-237-3333 | fax: 218-237-3377



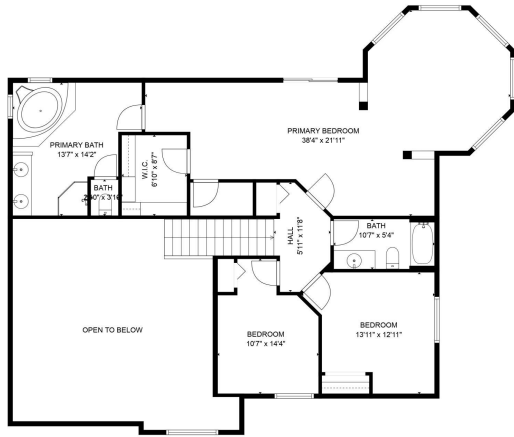
\$674,900
 MLS 7068661 Residential
 14750 Matson Road
 Frazee MN 56544



website: www.AffinityRealEstate.com | email: info@affinityrealestate.com | office: 218-237-3333 | fax: 218-237-3377

Affinity
REAL ESTATE INC

\$674,900
MLS 7068661 Residential
14750 Matson Road
Frazee MN 56544



Total GLA: 3131 sq. ft. | Total: 4710 sq. ft.
 Floor 1 - Below grade: (Excluded areas 1379 sq. ft.)
 Floor 2: 1822 sq. ft.
 Floor 3: 1309 sq. ft. (Excluded areas 473 sq. ft.)
 FLOOR PLAN CREATED BY CIBC/CAIA. ALL MEASUREMENTS GIVEN HIGHLY RELIABLE BUT NOT GUARANTEED.



website: www.AffinityRealEstate.com | email: info@affinityrealestate.com | office: 218-237-3333 | fax: 218-237-3377



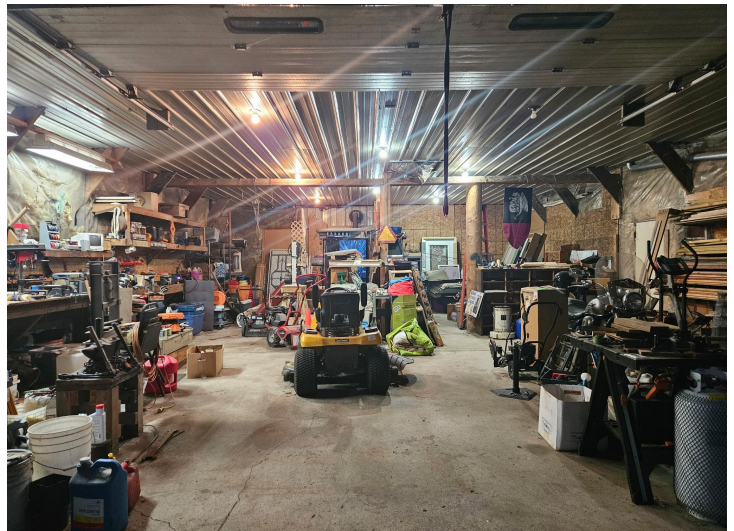
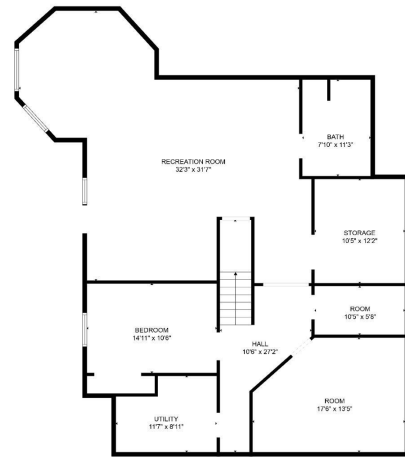
\$674,900
 MLS 7068661 Residential
 14750 Matson Road
 Frazee MN 56544



website: www.AffinityRealEstate.com | email: info@affinityrealestate.com | office: 218-237-3333 | fax: 218-237-3377



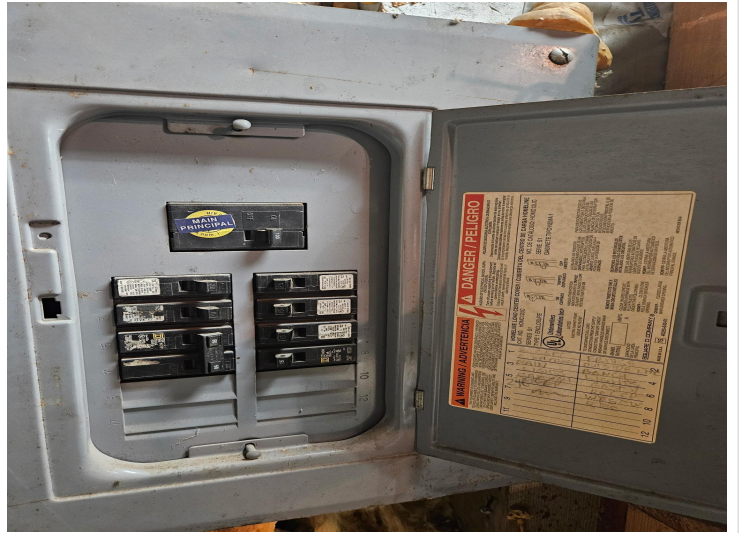
\$674,900
MLS 7068661 Residential
14750 Matson Road
Frazee MN 56544



website: www.AffinityRealEstate.com | email: info@affinityrealestate.com | office: 218-237-3333 | fax: 218-237-3377



\$674,900
 MLS 7068661 Residential
 14750 Matson Road
 Frazee MN 56544



website: www.AffinityRealEstate.com | email: info@affinityrealestate.com | office: 218-237-3333 | fax:218-237-3377

Affinity
REAL ESTATE INC

\$674,900
MLS 7068661 Residential
14750 Matson Road
Frazee MN 56544



website: www.AffinityRealEstate.com | email: info@affinityrealestate.com | office: 218-237-3333 | fax: 218-237-3377



\$674,900
MLS 7068661 Residential
14750 Matson Road
Frazee MN 56544