

MLS 7068721 Land

\$185,000

36.58 Acres
Raw Land

27634 218th Street
Long Prairie MN 56347

Status: Active

Description:

New to the market is this prime 36.58-acre hunting property located in Long Prairie Township. This land offers outstanding opportunities for hunting whitetail deer, turkey, and waterfowl. The parcel features all high ground, mature oak trees, and a pond, creating the perfect habitat for wildlife and outdoor recreation. It would also make an excellent location to build your dream home. Don't miss this rare opportunity to own a premier piece of land.

Additional Details:

Year Built	1900
Lot Acres	36.58
Lot Dimensions	Irregular See Survey
School District	2753
Taxes	(unreported)
Taxes with Assessments	(unreported)
Tax Year	2026

Additional Features:

Driving Directions:

From Long Prairie, take County 12 east to County 101. Go approximately 2 miles to 281st Street. Go about 1/2 mile to the property on the left.



Listed By:
Central MN Realty LLC

Affinity Real Estate Inc. participates in the Regional Multiple Listing Service of Minnesota, Inc Broker Reciprocity (sm) program, allowing us to display other broker's listings on our website. All properties are subject to prior sale, change or withdrawal.



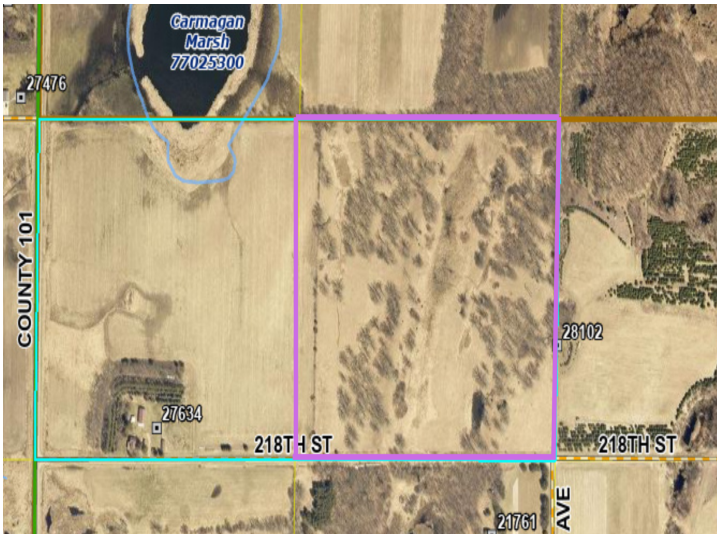
Call Affinity Real Estate

218-237-3333

info@affinityrealestate.com



Affinity Real Estate - 600 Park Avenue South - Park Rapids MN 56470



website: www.AffinityRealEstate.com | email: info@affinityrealestate.com | office: 218-237-3333 | fax:218-237-3377



\$185,000
MLS 7068721 Land
27634 218th Street
Long Prairie MN 56347



website: www.AffinityRealEstate.com | email: info@affinityrealestate.com | office: 218-237-3333 | fax:218-237-3377



\$185,000
MLS 7068721 Land
27634 218th Street
Long Prairie MN 56347