



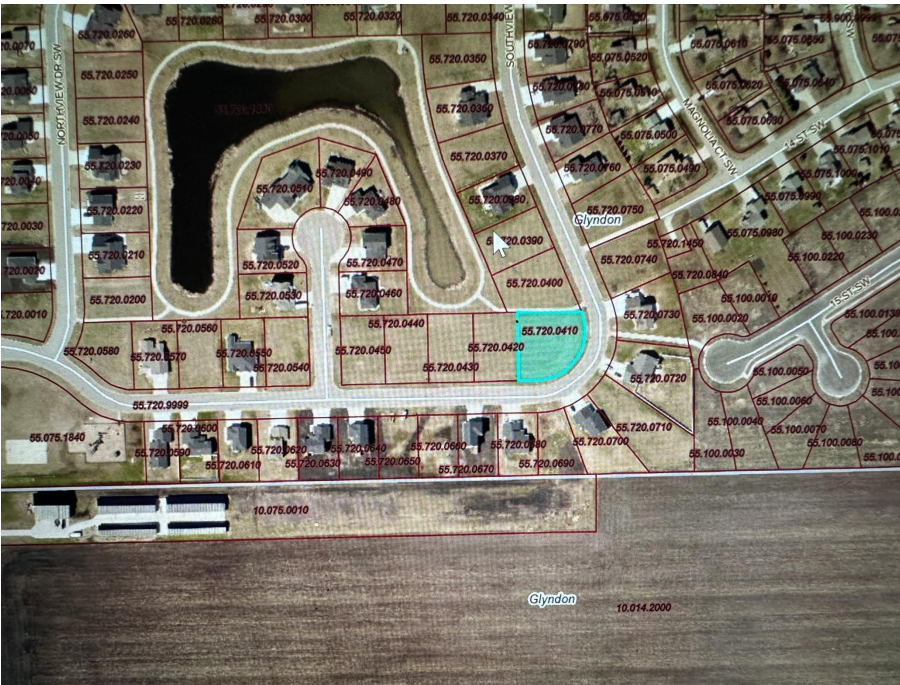
MLS 7068836 Land

**\$59,000**

0.394 Acres  
Subdivided

1261 Southview Drive  
Glyndon MN 56547

Status: Active



**Description:**

Generous sized lot that is nearly a half acre ready for you to build your next dream home! Corner lot positioned on recreational paths with playgrounds and beautiful direct pond views. Pick the builder of your choice and get digging today! Drive by and see it for yourself!

**Additional Details:**

Lot Acres	0.394
Lot Dimensions	140 x 124
School District	2164
Taxes	\$547
Taxes with Assessments	\$3,150
Tax Year	2025

**Additional Features:**

**Driving Directions:**

194 East to MN 336 N. Right on 28th Ave S, Left on 100th St S and Right on Southview Dr S



Listed By:  
RE/MAX Legacy Realty

Affinity Real Estate Inc. participates in the Regional Multiple Listing Service of Minnesota, Inc Broker Reciprocity (sm) program, allowing us to display other broker's listings on our website. All properties are subject to prior sale, change or withdrawal.



Call Affinity Real Estate

**218-237-3333**

[info@affinityrealestate.com](mailto:info@affinityrealestate.com)



Affinity Real Estate - 600 Park Avenue South - Park Rapids MN 56470



website: [www.AffinityRealEstate.com](http://www.AffinityRealEstate.com) | email: [info@affinityrealestate.com](mailto:info@affinityrealestate.com) | office: 218-237-3333 | fax:218-237-3377



**\$59,000**  
MLS 7068836 Land  
1261 Southview Drive  
Glyndon MN 56547