



MLS 7068848 Lake Home

\$575,000

2,280 sq ft
3 bedrooms
2 baths

18492 Raymond Drive
Cass Lake MN 56633

Waterfront: Cass

Status: Active

Description:

This property features a large lot on Cass Lake, offering approximately 260 feet of lake frontage and stunning views of Allen's Bay. Spanning 3.22 acres, the site provides ample space and privacy, making it a unique opportunity for those seeking a lakeside retreat. The primary residence is a rambler-style house with three bedrooms and two bathrooms. It also features a full basement, providing plenty of additional space for storage or potential living area expansion. In addition to the main house, the property includes two rustic cabins. Each cabin offers two bedrooms, one bathroom, and a kitchen. For those in need of workspace or additional storage, the property boasts a spacious shop measuring 56x28 feet and equipped with four overhead doors. With its expansive acreage, multiple dwellings, and prime lake frontage, this property holds significant potential for a variety of uses. Come and see all this unique lakefront property has to offer! Agent related to seller.

Additional Details:

Year Built	2002
Lot Acres	3.22
Lot Dimensions	260x500x275x575
Garage Stalls	6
School District	31
Taxes	\$6,734
Taxes with Assessments	\$6,734
Tax Year	2026

Additional Features:

Basement: Other **Fuel:** Propane **Garage:** 6 **Heat:** Forced Air **Sewer:** Private Sewer **Water:** Private **Air Conditioning:** None

Driving Directions:

From Cass Lake, Hwy 2 west to north on 69th Ave, veer right on Great River Rd (33), right on Windigo Dr SE to right on Raymond Dr SE, follow to home.



Listed By:
Realty Experts, LLC

Affinity Real Estate Inc. participates in the Regional Multiple Listing Service of Minnesota, Inc Broker Reciprocity (sm) program, allowing us to display other broker's listings on our website. All properties are subject to prior sale, change or withdrawal.



Call Affinity Real Estate

218-237-3333

info@affinityrealestate.com



Affinity Real Estate - 600 Park Avenue South - Park Rapids MN 56470



website: www.AffinityRealEstate.com | email: info@affinityrealestate.com | office: 218-237-3333 | fax: 218-237-3377

Affinity
REAL ESTATE INC

\$575,000
MLS 7068848 Lake Home
18492 Raymond Drive
Cass Lake MN 56633



website: www.AffinityRealEstate.com | email: info@affinityrealestate.com | office: 218-237-3333 | fax: 218-237-3377

Affinity
REAL ESTATE INC

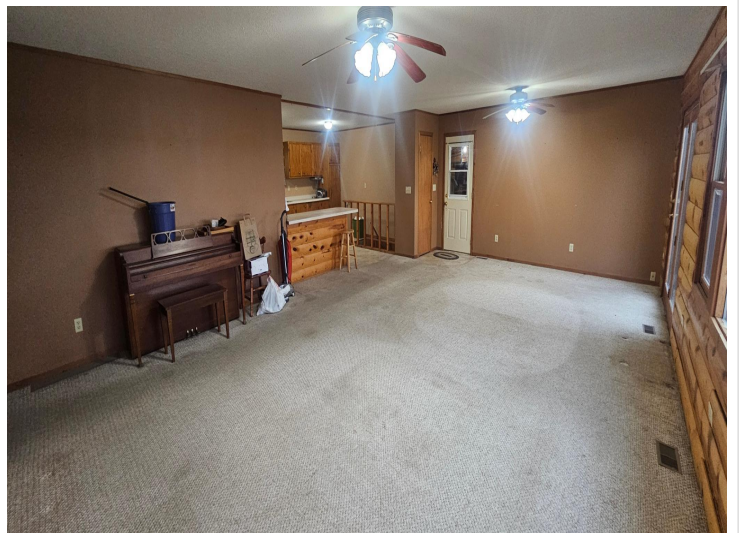
\$575,000
MLS 7068848 Lake Home
18492 Raymond Drive
Cass Lake MN 56633



website: www.AffinityRealEstate.com | email: info@affinityrealestate.com | office: 218-237-3333 | fax:218-237-3377

Affinity
REAL ESTATE INC

\$575,000
MLS 7068848 Lake Home
18492 Raymond Drive
Cass Lake MN 56633



website: www.AffinityRealEstate.com | email: info@affinityrealestate.com | office: 218-237-3333 | fax:218-237-3377

Affinity
REAL ESTATE INC

\$575,000
MLS 7068848 Lake Home
18492 Raymond Drive
Cass Lake MN 56633



website: www.AffinityRealEstate.com | email: info@affinityrealestate.com | office: 218-237-3333 | fax: 218-237-3377

Affinity
REAL ESTATE INC

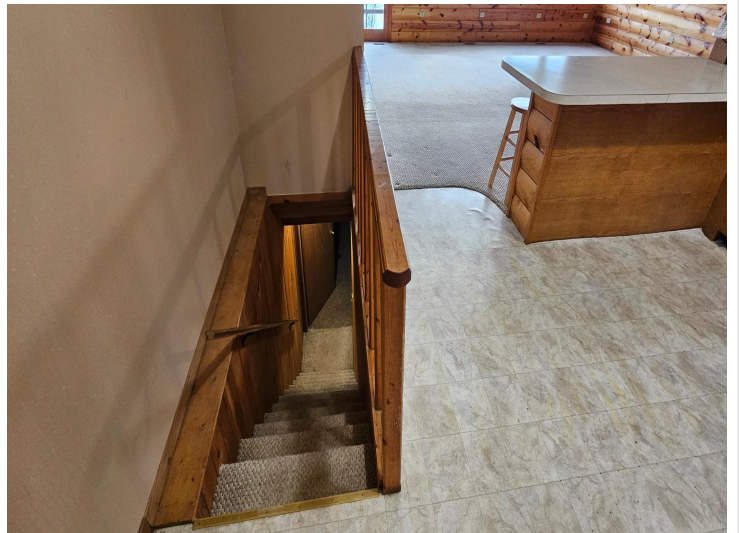
\$575,000
MLS 7068848 Lake Home
18492 Raymond Drive
Cass Lake MN 56633



website: www.AffinityRealEstate.com | email: info@affinityrealestate.com | office: 218-237-3333 | fax:218-237-3377

Affinity
REAL ESTATE INC

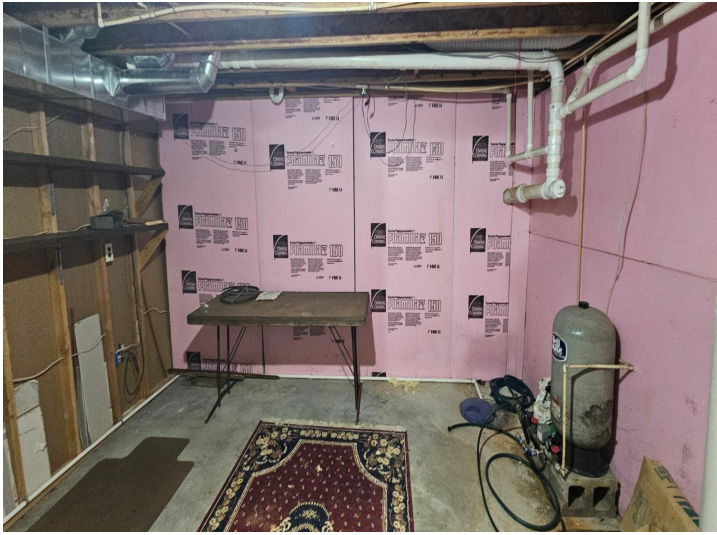
\$575,000
MLS 7068848 Lake Home
18492 Raymond Drive
Cass Lake MN 56633



website: www.AffinityRealEstate.com | email: info@affinityrealestate.com | office: 218-237-3333 | fax:218-237-3377



\$575,000
MLS 7068848 Lake Home
18492 Raymond Drive
Cass Lake MN 56633



website: www.AffinityRealEstate.com | email: info@affinityrealestate.com | office: 218-237-3333 | fax:218-237-3377



\$575,000
MLS 7068848 Lake Home
18492 Raymond Drive
Cass Lake MN 56633