



MLS 7068904 Land

**\$299,900**

45.36 Acres  
Raw Land

51246 Old Mill Drive  
Osage MN 56570

Status: Active

**Description:**

This 46-acre property in Becker County is a true whitetail hunter's dream—offering all the key ingredients needed to consistently hold and grow mature deer. Ideally located between Park Rapids and Detroit Lakes in the heart of the Smokey Hills, this tract delivers the layout, habitat diversity, and low hunting pressure serious hunters are after. The land features a diverse mix of pine and mature oak, along with pockets of thick brush that provide excellent bedding cover. There are a few low areas that hold water even in dry years, creating natural sources that help keep wildlife on the property. The overall setup offers the kind of security that encourages deer to remain on-site during daylight hours. An established trail system winds throughout the property, providing easy access to multiple strategically placed deer stands. Several established food plots—historically planted with rye and clover—further enhance the property's ability to attract and hold game.

As an added bonus, the entire northern boundary adjoins Smokey Hills State Forest, giving you direct access to approximately 14,000 acres of additional public land for hunting and recreation. Whether you enjoy ATV riding, snowmobiling, or biking, this location offers year-round outdoor opportunities.

This is a rare chance to own a turnkey multi species hunting property in a highly sought-after area.

**Additional Details:**

Lot Acres	45.36
Lot Dimensions	irregular
School District	309
Taxes	\$1,178
Taxes with Assessments	\$210
Tax Year	2025

**Additional Features:**

**Driving Directions:**

Approximately 20 miles east of Detroit Lakes on hwy 34, turn left on old mill rd, turn right on old mill dr., property marked with signs.



Listed By:  
HomeSmart Adventure Realty

Affinity Real Estate Inc. participates in the Regional Multiple Listing Service of Minnesota, Inc Broker Reciprocity (sm) program, allowing us to display other broker's listings on our website. All properties are subject to prior sale, change or withdrawal.



**Call Affinity Real Estate**

**218-237-3333**

**info@affinityrealestate.com**



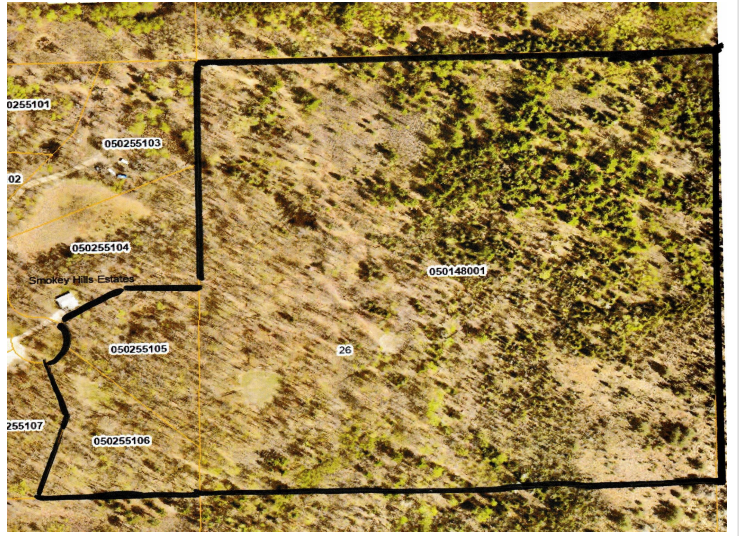
**Affinity Real Estate - 600 Park Avenue South - Park Rapids MN 56470**



website: [www.AffinityRealEstate.com](http://www.AffinityRealEstate.com) | email: [info@affinityrealestate.com](mailto:info@affinityrealestate.com) | office: 218-237-3333 | fax: 218-237-3377

**Affinity**  
REAL ESTATE INC

**\$299,900**  
MLS 7068904 Land  
51246 Old Mill Drive  
Osage MN 56570



website: [www.AffinityRealEstate.com](http://www.AffinityRealEstate.com) | email: [info@affinityrealestate.com](mailto:info@affinityrealestate.com) | office: 218-237-3333 | fax:218-237-3377



**\$299,900**  
MLS 7068904 Land  
51246 Old Mill Drive  
Osage MN 56570