



MLS 7069027 Residential

**\$349,000**

1,405 sq ft  
3 bedrooms  
2 baths

13906 Paper Birch Circle  
Baxter MN 56425

Status: Coming Soon

**Description:**

Welcome to our Rockwood Model on Paper Birch Circle!! This model features an open floorplan with lots of windows to let in natural sunlight. Stainless steel appliances and granite countertops complete the kitchen!

Paved trails filled with wildlife close by, walk or bike down to the fishing dock, bring the kids to play at the park or spend the day swimming at Whipple Beach, only a few blocks away from your new home!

**Additional Details:**

Year Built	2025
Lot Acres	0.53
Lot Dimensions	100x215x106x248
Garage Stalls	2
School District	181
Taxes	\$330
Taxes with Assessments	\$330
Tax Year	2025

**Additional Features:**

**Fuel:** Natural Gas **Heat:** Forced Air

**Driving Directions:**

From 371|210 take 210 west to Memorywood rd turn right, go to Cedar Scenic Rd turn Left. To Travine turn Left to Deerwood Rd turn Right to Paper Birch Circle, Property on the right. Corner Lot on Paper Birch and Deerwood



Listed By:  
Counselor Realty Brainerd Lakes

Affinity Real Estate Inc. participates in the Regional Multiple Listing Service of Minnesota, Inc Broker Reciprocity (sm) program, allowing us to display other broker's listings on our website. All properties are subject to prior sale, change or withdrawal.



**Call Affinity Real Estate**

**218-237-3333**

**info@affinityrealestate.com**



**Affinity Real Estate - 600 Park Avenue South - Park Rapids MN 56470**



website: [www.AffinityRealEstate.com](http://www.AffinityRealEstate.com) | email: [info@affinityrealestate.com](mailto:info@affinityrealestate.com) | office: 218-237-3333 | fax: 218-237-3377

**Affinity**  
REAL ESTATE INC

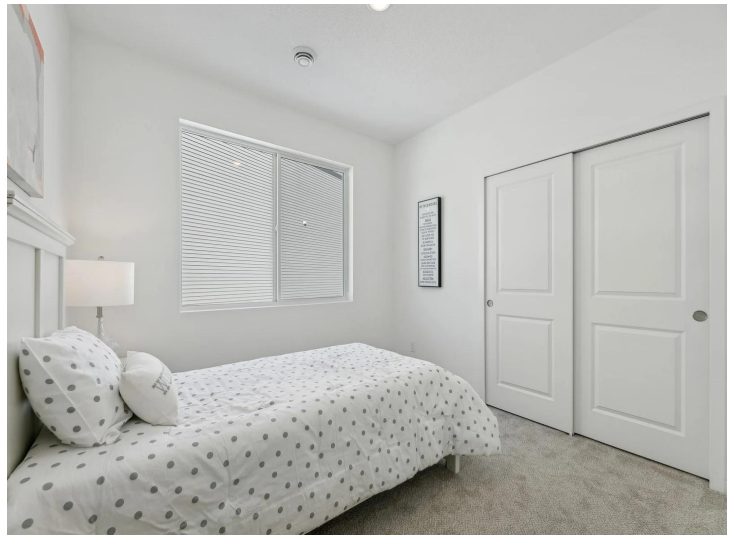
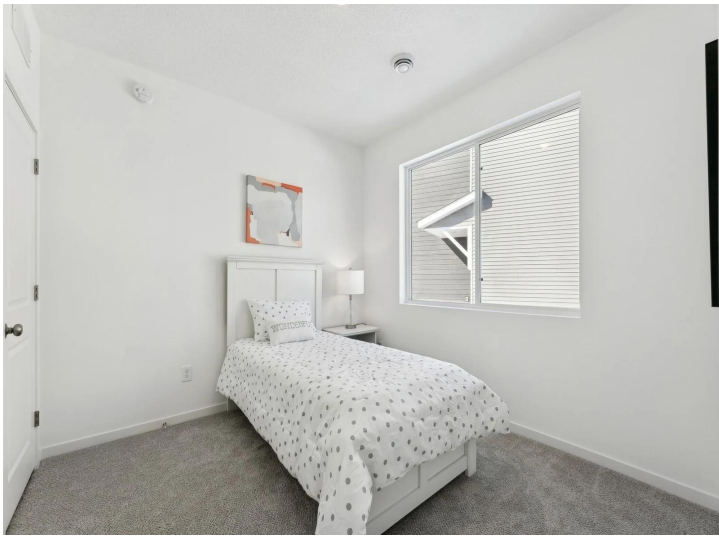
**\$349,000**  
MLS 7069027 Residential  
13906 Paper Birch Circle  
Baxter MN 56425



website: [www.AffinityRealEstate.com](http://www.AffinityRealEstate.com) | email: [info@affinityrealestate.com](mailto:info@affinityrealestate.com) | office: 218-237-3333 | fax:218-237-3377

**Affinity**  
REAL ESTATE INC

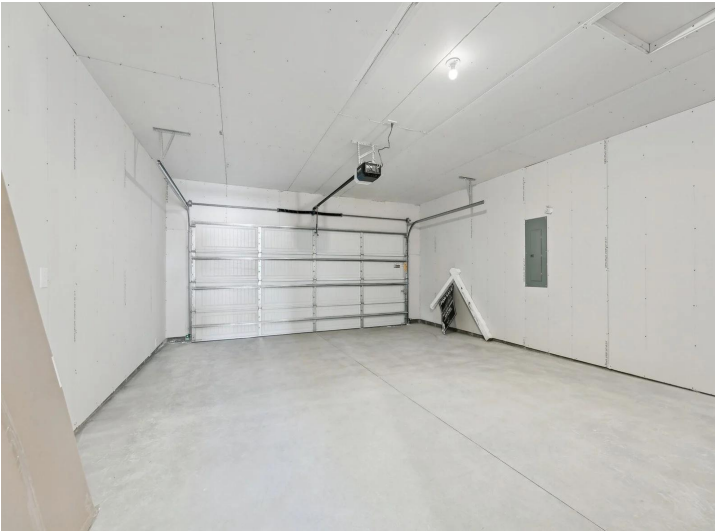
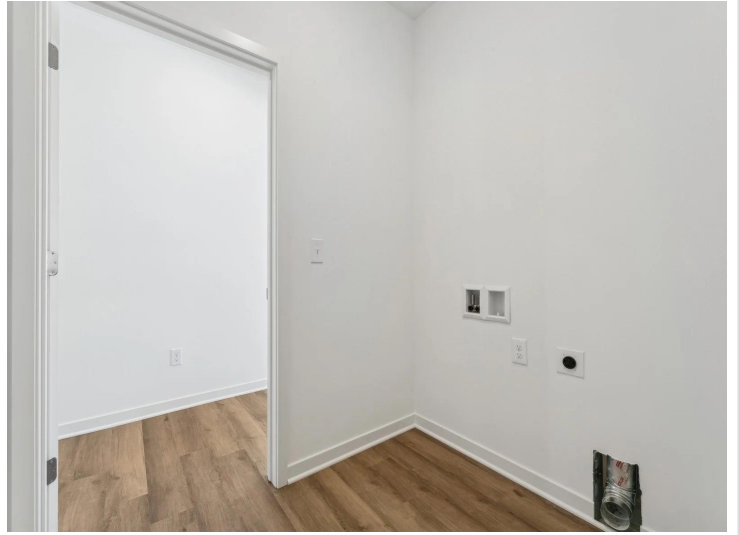
**\$349,000**  
MLS 7069027 Residential  
13906 Paper Birch Circle  
Baxter MN 56425



website: [www.AffinityRealEstate.com](http://www.AffinityRealEstate.com) | email: [info@affinityrealestate.com](mailto:info@affinityrealestate.com) | office: 218-237-3333 | fax:218-237-3377



**\$349,000**  
MLS 7069027 Residential  
13906 Paper Birch Circle  
Baxter MN 56425



## The Rockwood

**Home Features:**

<ul style="list-style-type: none"> <li>• 9' Ceilings</li> <li>• Oversize Master Closet</li> <li>• Private Master Bath</li> <li>• Delta Fixtures</li> <li>• Granite Countertops</li> <li>• 42" Upper Cabinets w/Crown</li> <li>• Soft Close Cabinet Doors</li> <li>• Soft Close Cabinet Drawers</li> <li>• Oversized Island Top</li> <li>• Gas Range</li> </ul>	<table border="0" style="width: 100%;"> <tr> <td style="text-align: center;">  3 Bed             </td> <td style="text-align: center;">  1,405 sf             </td> </tr> <tr> <td style="text-align: center;">  2 Bath             </td> <td style="text-align: center;">  2 Car             </td> </tr> </table> <ul style="list-style-type: none"> <li>• Designer Bathroom Vanity Lights</li> <li>• LED Disc Lights Throughout</li> <li>• 3' Doors from Entry to Master Suite</li> <li>• LP Smart Side Front Elevation</li> <li>• Stone Front Elevation</li> <li>• Covered Patio</li> <li>• LVP Flooring in Kitchen, Living, Bathrooms, Laundry</li> <li>• Carpet Bedrooms</li> </ul>	3 Bed	1,405 sf	2 Bath	2 Car
3 Bed	1,405 sf				
2 Bath	2 Car				

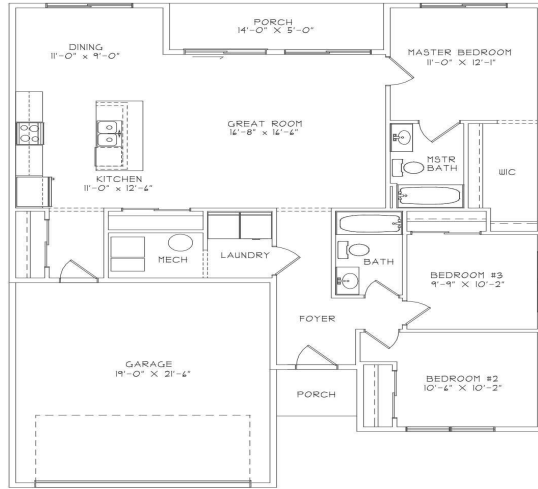
website: [www.AffinityRealEstate.com](http://www.AffinityRealEstate.com) | email: [info@affinityrealestate.com](mailto:info@affinityrealestate.com) | office: 218-237-3333 | fax: 218-237-3377



**\$349,000**  
 MLS 7069027 Residential  
 13906 Paper Birch Circle  
 Baxter MN 56425

# Main Level

1,405 finished sq ft



website: [www.AffinityRealEstate.com](http://www.AffinityRealEstate.com) | email: [info@affinityrealestate.com](mailto:info@affinityrealestate.com) | office: 218-237-3333 | fax: 218-237-3377



**\$349,000**

MLS 7069027 Residential  
13906 Paper Birch Circle  
Baxter MN 56425